



Department of Information Technology

Academic Year: 2020-2021(ODD SEM)

Course Exit Analysis Report (SemIII)

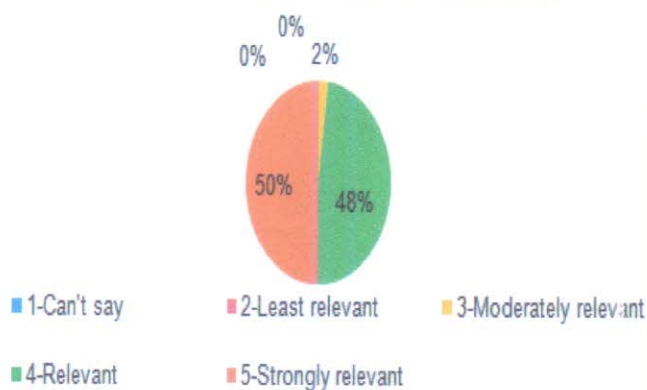
Subject: EM-III

Subject In-charge: Prof. Vasudeo Nazirkar

CO1. Apply the concept of Laplace transform to solve the real integrals in engineering problems

Score	No. of Students	Percentage (%)
1-Can't say	0	0
2-Least relevant	0	0
3-Moderately relevant	1	2.08
4-Relevant	23	47.9
5-Strongly relevant	24	50
Total	48	100

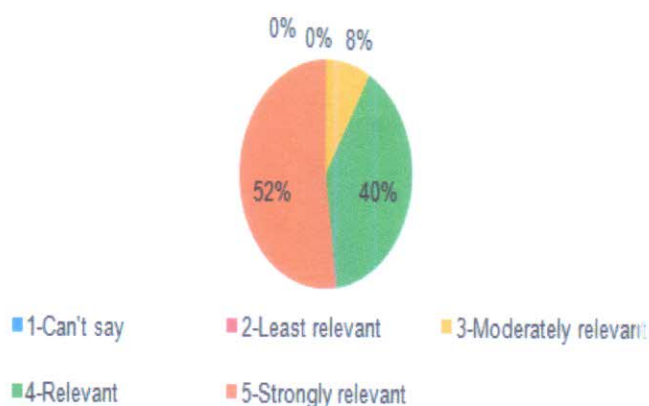
CO1. Apply the concept of Laplace transform to solve the real integrals in engineering problems .



CO2. Apply the concept of inverse Laplace transform in engineering problems.

Score	No. of Students	Percentage (%)
1-Can't say	0	0
2-Least relevant	0	0
3-Moderately relevant	4	8.33
4-Relevant	19	39.58
5-Strongly relevant	25	52.08
Total	48	100

CO2. Apply the concept of inverse Laplace transform in engineering problems.





Department of Information Technology

Academic Year: 2020-2021(ODD SEM)

Course Exit Analysis Report (SemIII)

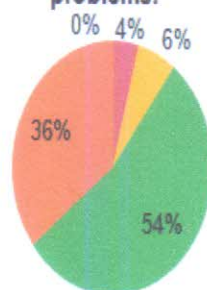
Subject: EM-III

Subject In-charge: Prof.Vasudeo Nazirkar

CO3. Expand the periodic function by using Fourier series for real life problems and complex engineering problems.

Score	No. of Students	Percentage (%)
1-Can't say	0	0
2-Least relevant	2	4.16
3-Moderately relevant	3	6.25
4-Relevant	26	54.16
5-Strongly relevant	17	35.41
Total	48	100

CO3. Expand the periodic function by using Fourier series for real life problems and complex engineering problems.

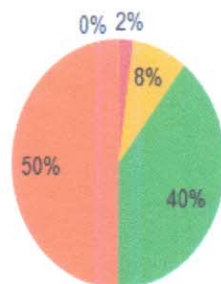


1-Can't say
2-Least relevant
3-Moderately relevant
4-Relevant
5-Strongly relevant

CO4. Find orthogonal trajectories and analytic function by using basic concepts of complex variable theory.

Score	No. of Students	Percentage (%)
1-Can't say	0	0
2-Least relevant	1	2.08
3-Moderately relevant	4	8.33
4-Relevant	19	39.58
5-Strongly relevant	24	50
Total	48	100

CO4. Find orthogonal trajectories and analytic function by using basic concepts of complex variable theory.



1-Can't say
2-Least relevant
3-Moderately relevant
4-Relevant
5-Strongly relevant



Department of Information Technology

Academic Year: 2020-2021(ODD SEM)

Course Exit Analysis Report (SemIII)

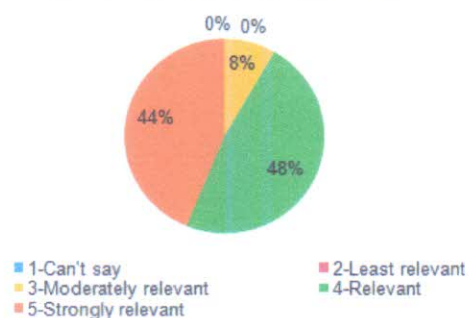
Subject: EM-III

Subject In-charge: Prof. Vasudeo Nazirkar

CO5. Apply the concept of Correlation and Regression to the engineering problems in data science.

Score	No. of Students	Percentage (%)
1-Can't say	0	0
2-Least relevant	0	0
3-Moderately relevant	4	8.33
4-Relevant	23	47.91
5-Strongly relevant	21	43.75
Total	48	100

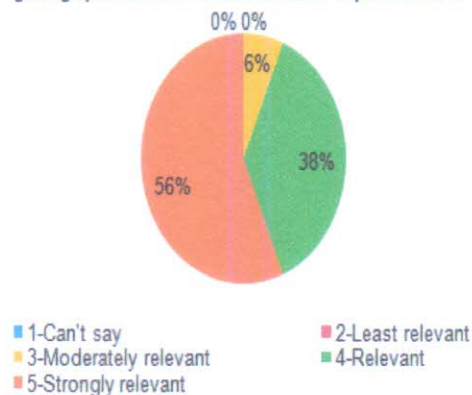
CO5. Apply the concept of Correlation and Regression to the engineering problems in data science.



CO6. Understand the concept of probability and expectation for getting spread of data and distribution of probabilities.

Score	No. of Students	Percentage (%)
1-Can't say	0	0
2-Least relevant	0	0
3-Moderately relevant	3	6.25
4-Relevant	18	37.5
5-Strongly relevant	27	56.25
Total	48	100

CO6. Understand the concept of probability and expectation for getting spread of data and distribution of probabilities.



Maleo
HOD

HOD

Department of
Information Technology

Principal
PRINCIPAL

Principal

Saraswati College of Engineering
Kharghar, Navi Mumbai - 410 210.



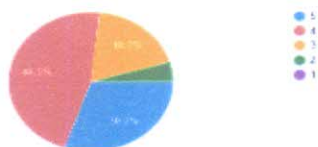
SARASWATI Education Society's
SARASWATI College of Engineering

Learn Live Achieve and Contribute
Kharghar, Navi Mumbai - 410 210.

Department of Information Technology
Academic Year: 2020-2021(ODD SEM)
Course Exit Analysis Report (SemIII)
Subject: DSA
Subject In-charge: Prof. Maahi Khemchandani.

After Completing Course of Data Structure and Analysis, are you able to,

1. Understand Data structure with its types and concept of stack, Queue and Linked List with implementation of operations like insertion, deletion, and traversing mechanism etc. on it?
43 responses



Degree of Relevance:	No. Of Students	Percentage
1. Can't Say	0	0
2. Least Relevant	2	4
3. Moderately Relevant	8	19
4. Relevant	20	47
5. Strongly Relevant	13	30
Total	43	100%

2. Discuss and Categorize the concept of nonlinear data Structure such as trees with advanced data structure often including threaded binary tree, Binary Search Tree, AVL Tree. Identify algorithm to perform numerous operations like creation, insertion and traversing Tree.
43 responses



Degree of Relevance:	No. Of Students	Percentage
1. Can't Say	0	0
2. Least Relevant	2	4
3. Moderately Relevant	9	21
4. Relevant	24	56
5. Strongly Relevant	8	19
Total	43	100



SARASWATI Education Society's
SARASWATI College of Engineering

Learn Live Achieve and Contribute

Kharghar, Navi Mumbai - 410 210.

Department of Information Technology

Academic Year: 2020-2021(ODD SEM)

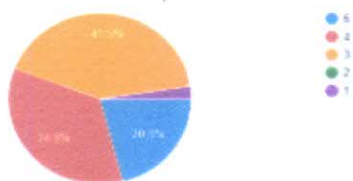
Course Exit Analysis Report (SemIII)

Subject: DSA

Subject In-charge: Prof. Maahi Khemchandani.

3. Discuss the concepts of graph with its various representation and its types - Illustrate Graph with its various operations.

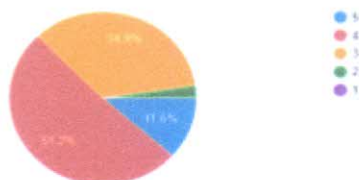
43 responses



Degree of Relevance:	No. Of Students	Percentage
1. Can't Say	1	2
2. Least Relevant	0	0
3. Moderately Relevant	18	42
4. Relevant	15	35
5. Strongly Relevant	9	21
Total	43	100

4. Discuss . Use and interpret the core values of recursion in programming. Discuss Identify a need for storage management process with its techniques of handling fragmentation like first fit, best fit, worst fit.

43 responses



Degree of Relevance:	No. Of Students	Percentage
1. Can't Say	0	0
2. Least Relevant	1	2
3. Moderately Relevant	15	35
4. Relevant	22	51
5. Strongly Relevant	5	12
Total	43	100

5. Understand the concepts of sorting, searching and hashing with its collision handling methods like Linear Probing, Chaining etc.

43 responses



Degree of Relevance:	No. Of Students	Percentage
1. Can't Say	0	0
2. Least Relevant	3	7
3. Moderately Relevant	14	33
4. Relevant	18	42
5. Strongly Relevant	8	19
Total	43	100



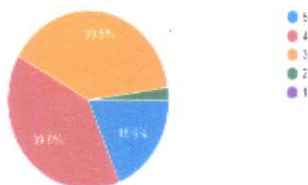
SARASWATI Education Society's
SARASWATI College of Engineering

Learn Live Achieve and Contribute

Kharghar, Navi Mumbai - 410 210.

6. Explore various applications of stack like expression conversion, parenthesis matching, Queue like scheduling, Linked List like addition of two polynomial equation, trees like Huffman code, and Graph like Minimum Spanning Tree algorithms.

43 responses



Degree of Relevance:	No. Of Students	Percentage
1. Can't Say	0	0
2. Least Relevant	1	1
3. Moderately Relevant	17	40
4. Relevant	17	40
5. Strongly Relevant	8	19
Total	43	100

Maloo
HOD

HOD
Department of
Information Technology

[Signature]
PRINCIPAL

Principal
Saraswati College of Engineering
Kharghar, Navi Mumbai - 410 210.



Department of Information Technology

Academic Year: 2020-2021(ODD SEM)

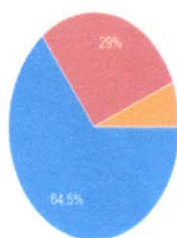
Course Exit Analysis Report (SemIII)

Subject: DBMS

Subject In-charge: Prof. Diksha Kumar

1. Identify the need of Database Management System. Compare and contrast Traditional systems and database systems

31 responses

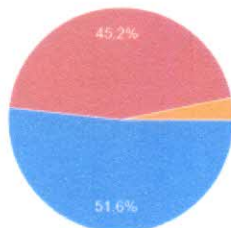


5 Strongly Relevant
 4 Relevant
 3 Moderately Relevant
 2 Least Relevant
 1 Can't say

Score	No. of Students	Percentage
1- Cant Say	0	0
2- Least Relevant	0	0
3-Moderately Relevant	2	6.45%
4-Relevant	9	29.03%
5-Strongly Relevant	20	64.52%

2. Apply the theory of database systems. Able to design a database and solve a real time database problem

31 responses

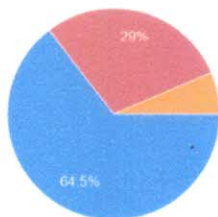


5 Strongly Relevant
 4 Relevant
 3 Moderately Relevant
 2 Least Relevant
 1 Can't say

Score	No. of Students	Percentage
1- Cant Say	0	0
2- Least Relevant	0	0
3-Moderately Relevant	1	3.23%
4-Relevant	14	45.16%
5-Strongly Relevant	16	51.61%

3. Identify relational model constraints for the database . Apply relational algebra queries to implement database analysis and building

31 responses



5 Strongly Relevant
 4 Relevant
 3 Moderately Relevant
 2 Least Relevant
 1 Can't say

Score	No. of Students	Percentage
1- Cant Say	0	0
2- Least Relevant	0	0
3-Moderately Relevant	2	6.45%
4-Relevant	9	29.03%
5-Strongly Relevant	19	61.29%



SARASWATI Education Society's
SARASWATI College of Engineering

Learn Live Achieve and Contribute

Kharghar, Navi Mumbai - 410 210.

Department of Information Technology

Academic Year: 2020-2021(ODD SEM)

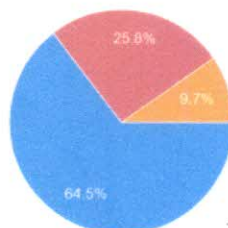
Course Exit Analysis Report (SemIII)

Subject: DBMS

Subject In-charge: Prof. Diksha Kumar

4. Apply the knowledge of SQL to formulate queries

31 responses

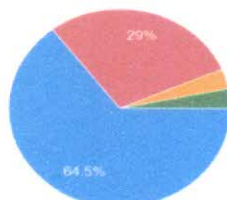


5 Strongly Relevant
4 Relevant
3 Moderately Relevant
2 Least Relevant
1 Can't say

Score	No. of Students	Percentage
1- Cant Say	0	0
2- Least Relevant	0	0
3-Moderately Relevant	3	9.68%
4-Relevant	8	25.81%
5-Strongly Relevant	20	64.52%

5. Identify design constraints. Apply the principles of normalization to normalize the database to the highest normalization level

31 responses

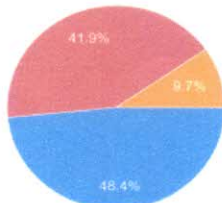


5 Strongly Relevant
4 Relevant
3 Moderately Relevant
2 Least Relevant
1 Can't say

Score	No. of Students	Percentage
1- Cant Say	0	0
2- Least Relevant	1	0
3-Moderately Relevant	1	3.23%
4-Relevant	9	29.03%
5-Strongly Relevant	19	61.29%

6. Demonstrate and identify the concept of transaction, concurrency and recovery.

31 responses



5 Strongly Relevant
4 Relevant
3 Moderately Relevant
2 Least Relevant
1 Can't say

Score	No. of Students	Percentage
1- Cant Say	0	0
2- Least Relevant	0	0
3-Moderately Relevant	3	9.68%
4-Relevant	13	41.94%
5-Strongly Relevant	15	48.39%

Male
HOD

HOD
Department of
Information Technology

Principal
PRINCIPAL

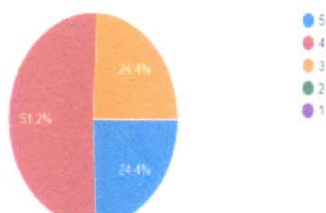
HOD
Principal
Department of
Saraswati College of Engineering
Information Technology



Department of Information Technology
Academic Year: 2020-2021(ODD SEM)
Course Exit Analysis Report (SemIII)
Subject: POC
Subject In-charge: Prof.ANURADHA DANDWATE

1. Explain the basic of Analog and Digital Communication Systems and can Compare between Analog and Digital Communication Systems to select best communication system as per application.

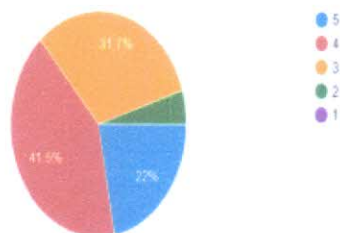
41 responses



Score	No. of Students	Percentage (%)
1- Can't Say	0	0
2 - Hardly	0	0
3- Moderately	10	24
4- Mostly	21	52
5- Definitely	10	24
Total	41	100

2. Differentiate types of noise.? Apply the knowledge of Friis formula to solve problems. Analyses the Fourier transform of time and frequency domain and interpret the result.

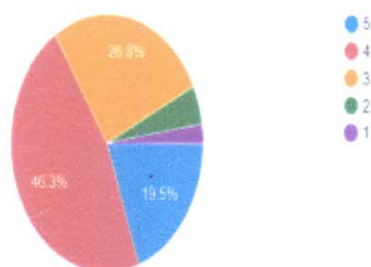
41 responses



Score	No. of Students	Percentage (%)
1- Can't Say	0	0
2 - Hardly	4	4
3- Moderately	13	32
4- Mostly	17	42
5- Definitely	9	22
Total	41	100

3. Explain Amplitude and Frequency modulation techniques. Sketch Transmitter and receiver of AM, DSB, SSB and FM.

41 responses



Score	No. of Students	Percentage (%)
1- Can't Say	1	3
2 - Hardly	1	3
3- Moderately	11	27
4- Mostly	19	47
5- Definitely	9	20
Total	41	100



SARASWATI Education Society's
SARASWATI College of Engineering

Learn Live Achieve and Contribute

Kharghar, Navi Mumbai - 410 210.

Department of Information Technology

Academic Year: 2020-2021(ODD SEM)

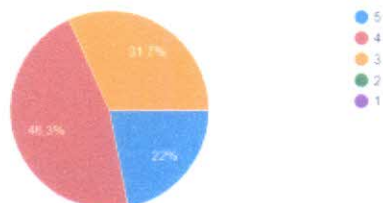
Course Exit Analysis Report (SemIII)

Subject: POC

Subject In-charge: Prof.ANURADHA DANDWATE

4. Explain Pulse analog and digital modulation techniques. Compare and contrast between Pulse digital modulation techniques to select best modulation technique

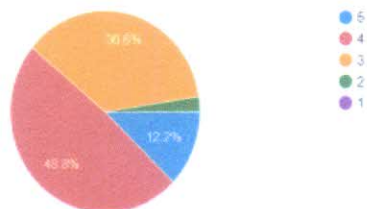
41 responses



Score	No. of Students	Percentage (%)
1- Can't Say	0	0
2 - Hardly	0	0
3- Moderately	13	32
4- Mostly	19	46
5- Definitely	9	22
Total	41	100

5. Explain ASK, FSK, PSK modulation techniques. Compare and contrast between ASK, FSK, PSK modulation techniques to select best modulation technique.

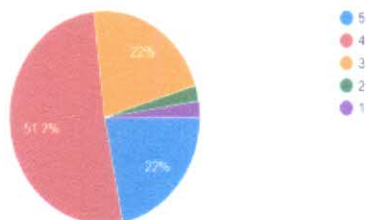
41 responses



Score	No. of Students	Percentage (%)
1- Can't Say	0	0
2 - Hardly	1	2
3- Moderately	15	37
4- Mostly	20	49
5- Definitely	5	12
Total	41	100

6. Explain Electromagnetic radiation and propagation and its types.

41 responses



Score	No. of Students	Percentage (%)
1- Can't Say	1	2
2 - Hardly	1	2
3- Moderately	9	22
4- Mostly	21	52
5- Definitely	9	22
Total	41	100

Maloo
HOD

HOD
Department of
Information Technology

Principal
PRINCIPAL

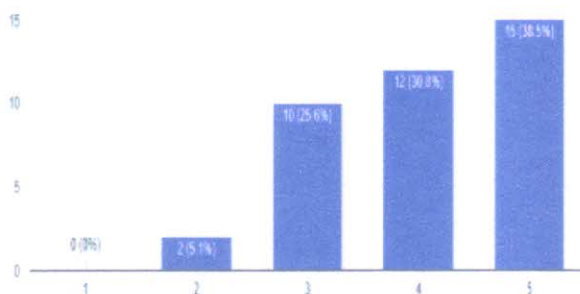
Principal
Saraswati College of Engineering
Kharghar, Navi Mumbai - 410 210.



Department of Information Technology
Academic Year: 2020-2021(ODD SEM)
Course Exit Analysis Report (SemIII)
Subject: JP
Subject In-charge: Prof.Kirti Pawar

Understand basic fundamental concepts of Java Programming like iteration, control statements etc.

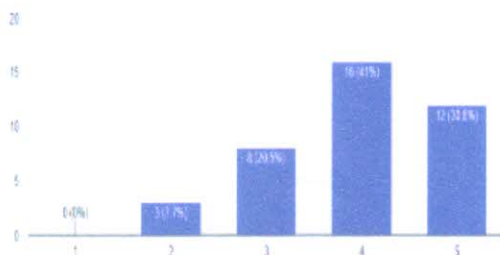
39 responses



Score	No of students	Percentage
1- Not at all	0	0
2- Not very Clearly	2	5.2
3- Satisfactory	10	25.6
4- Clearly	12	30.8
5- Very Clearly	15	38.4
Total	39	100

Discuss the concepts of classes, objects, members of a class and the relationships among them needed for finding the solution to specific problem with implementation.

39 responses



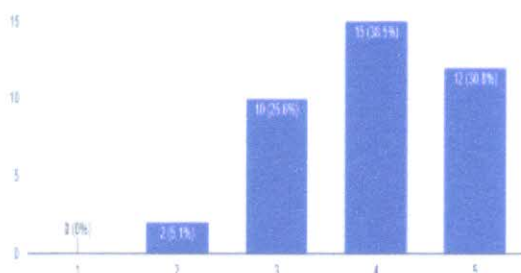
Score	No of students	Percentage
1- Not at all	0	0
2- Not very Clearly	3	7.7
3- Satisfactory	8	20.5
4- Clearly	16	41
5- Very Clearly	12	30.8
Total	39	100



Department of Information Technology
Academic Year: 2020-2021(ODD SEM)
Course Exit Analysis Report (SemIII)
Subject: JP
Subject In-charge: Prof.Kirti Pawar

Understand how to extend java classes and achieve re-usability using Inheritance, Interface and Packages.

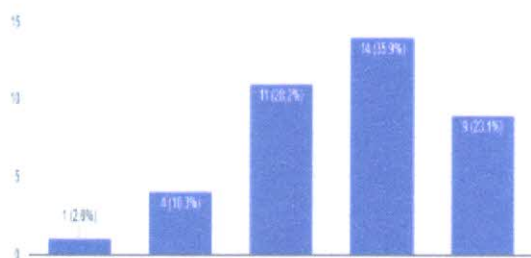
39 responses



Score	No of students	Percentage
1- Not at all	0	0
2- Not very Clearly	2	5.1
3-Satisfactory	10	25.6
4- Clearly	15	38.5
5- Very Clearly	12	30.8
Total	39	100

Understand how to Construct robust and faster programmed solutions to problems using concept of Multi threading, exceptions and file handling.

39 responses



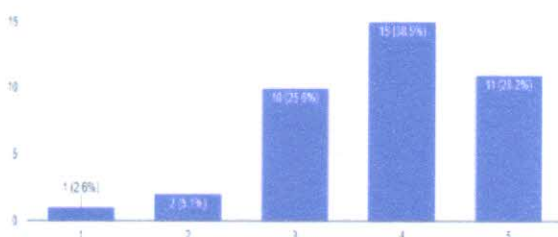
Score	No of students	Percentage
1- Not at all	1	2.6
2- Not very Clearly	4	10.3
3-Satisfactory	14	35.9
4- Clearly	11	28.1
5- Very Clearly	9	23.1
Total	39	100



Department of Information Technology
Academic Year: 2020-2021(ODD SEM)
Course Exit Analysis Report (SemIII)
Subject: JP
Subject In-charge: Prof.Kirti Pawar

Understand how to Design and develop Graphical User Interface using Abstract Window Toolkit and Swings along with response to the events.

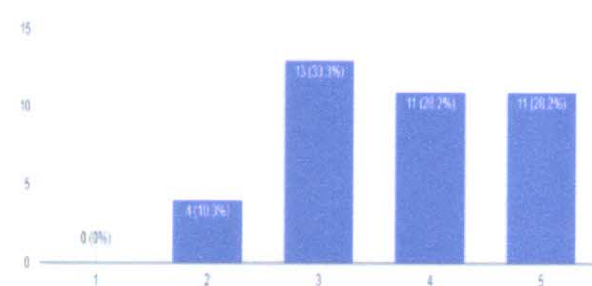
39 responses



Score	No of students	Percentage
1- Not at all	1	2.6
2- Not very Clearly	2	5.1
3-Satisfactory	10	25.6
4- Clearly	15	38.5
5- Very Clearly	11	28.2
Total	39	100

Understand how to develop Graphical User Interface by exploring JavaFX framework based on MVC architecture.

39 responses



Score	No of students	Percentage
1- Not at all	0	0
2- Not very Clearly	4	10.3
3-Satisfactory	13	33.3
4- Clearly	11	28.2
5- Very Clearly	11	28.2
Total	39	100

Malee
HOD

HOD
Department of
Information Technology

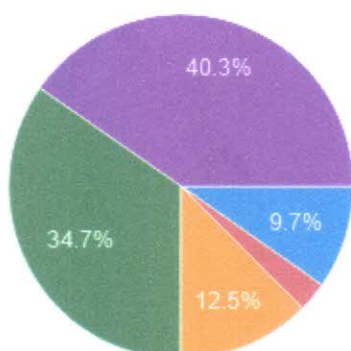
Principal
PRINCIPAL

Principal
Saraswati College of Engineering
Kharghar, Navi Mumbai - 410 210.



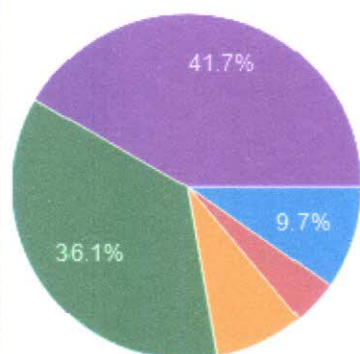
Department of Information Technology
Academic Year: 2020-2021(ODD SEM)
Course Exit Analysis Report (SemIII)
Subject: PCPF
Subject In-charge: Prof. Pravin Shinde

1. Understand the different programming paradigms



1-cants say	7	9.7
2 Hardly	2	2.8
3-moderate	9	12.5
4-mostly	25	34.7
5 Definitely	29	40.3
total	72	100

2. Understand the basic concept of object oriented programming

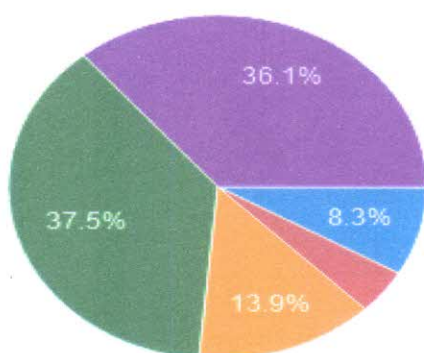


1-cants say	7	9.7
2 Hardly	3	4.2
3-moderate	6	8.3
4-mostly	26	38.1
5 Definitely	30	41.7
total	72	100



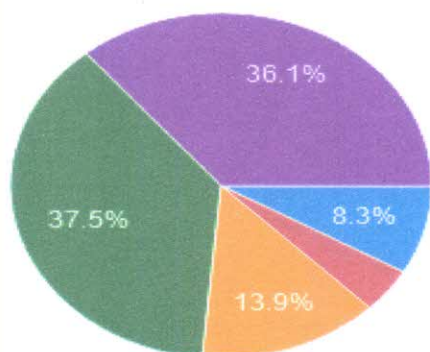
Department of Information Technology
Academic Year: 2020-2021(ODD SEM)
Course Exit Analysis Report (SemIII)
Subject: PCPF
Subject In-charge: Prof. Pravin Shinde

3. Understand the concept lambda calculus



1-cants say	6	8.3
2 Hardly	3	4.2
3-moderate	10	13.9
4-mostly	27	37.5
5 Definitely	26	36.1
total	72	100

4. Understand the structure of PROLOG language

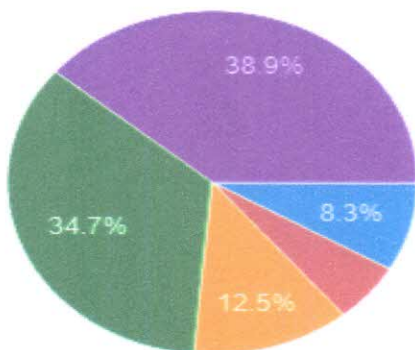


1-cants say	8	11.1
2 Hardly	2	2.8
3-moderate	9	12.5
4-mostly	25	34.7
5 Definitely	28	38.9
total	48	100



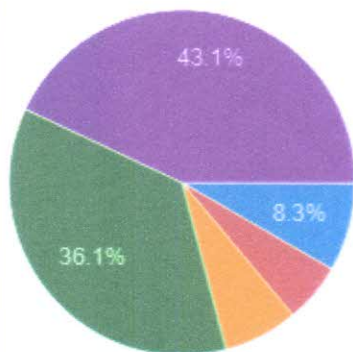
Department of Information Technology
Academic Year: 2020-2021(ODD SEM)
Course Exit Analysis Report (SemIII)
Subject: PCPF
Subject In-charge: Prof. Pravin Shinde

5. Understand the concept of Concurrent Programming Fundamentals



1-cants say	6	8.3
2 Hardly	4	5.6
3-moderate	9	12.53
4-mostly	25	34.7
5 Definitely	28	38.9
total	48	100

6. Understand the difference of compiler and interpreter and use of different compiler



1-cants say	6	8.3
2 Hardly	4	5.6
3-moderate	5	6.9
4-mostly	26	36.1
5 Definitely	31	43.1
total	48	100

Maloo
HOD

HOD
Department of
Information Technology

Principal
PRINCIPAL

Principal
Saraswati College of Engineering
Kharghar, Navi Mumbai - 410 210.



DEPARTMENT OF INFORMATION TECHNOLOGY.
Action Taken Based on Feedback from Student .(CO/PO)
Academic Year: 2020-2021(ODD SEM)

Summary of Feedback-

Feedback collected through course exit forms were analyzed and necessary actions which are useful for students were planned and conducted. Abstract for suggestions obtained from the stakeholders to enhance the employability of students are discussed below.

1. More practice for Engineering Mathematics III
2. Need animated videos for better understanding
3. Exposure to add on courses to boost practical knowledge
4. Need awareness about the latest technologies and practices in industry.

Action Taken-

Based on suggestions, various events are organized. Events are selected such that it will be beneficial for the career. Details of events organized at Department level or institutional level are mentioned below.

Sr. no	PROGRAM	COURSE	Feedback/ Suggetions	Action Taken	Date
1	IT	DSA	Sorting on Dictionaries	Provided content beyond syllabus on topic sorting algorithm used on dictionaries Topological sorting with its working and example.	As per requirement
2	IT	DBMS	Different Databases.	https://towardsdatascience.com/top-10-databases-to-use-in-2021-d7e6a85402ba https://www.dataversity.net/review-pros-cons-different-databases-relational-versus-non-relational/	As per requirement

Malav
HOD

HOD
Department of
Information Technology

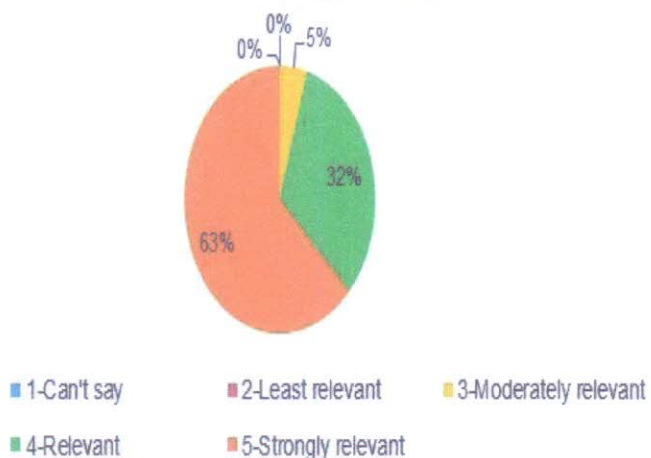
[Signature]
PRINCIPAL

Principal
Saraswati College of Engineering
Kharghar, Navi Mumbai - 410 210



Department of Information Technology
Academic Year: 2020-2021 (EVEN SEM)
Course Exit Analysis Report (SemIV)
Subject: EM-IV
Subject In-charge: Prof. Vasudeo Nazirkar

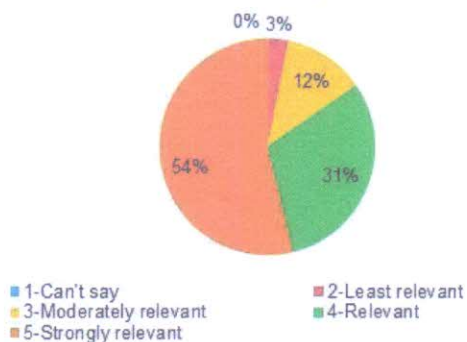
CO1. Apply the concept of eigen values and eigen vectors to solve engineering problems.



CO1. Apply the concept of eigen values and eigen vectors to solve engineering problems

Score	No. of Students	Percentage (%)
1-Can't say	0	0
2-Least relevant	0	0
3-Moderately relevant	3	4.61
4-Relevant	21	32.3
5-Strongly relevant	41	63.07
Total	65	100

CO2. Understand the concept of complex integration for evaluating integrals, computing residues & evaluating various contour integrals.



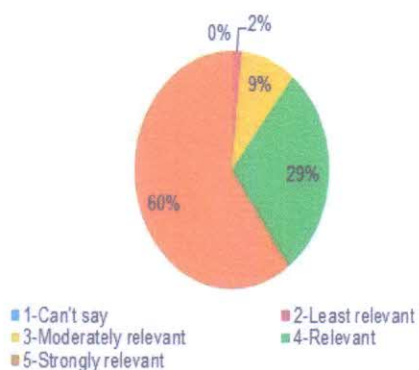
CO2. Understand the concept of complex integration for evaluating integrals, computing residues & evaluating various contour integrals,

Score	No. of Students	Percentage (%)
1-Can't say	0	0
2-Least relevant	2	3.07
3-Moderately relevant	8	12.3
4-Relevant	20	30.76
5-Strongly relevant	35	53.84
Total	65	100



Department of Information Technology
Academic Year: 2020-2021 (EVEN SEM)
Course Exit Analysis Report (SemIV)
Subject: EM-IV
Subject In-charge: Prof. Vasudeo Nazirkar

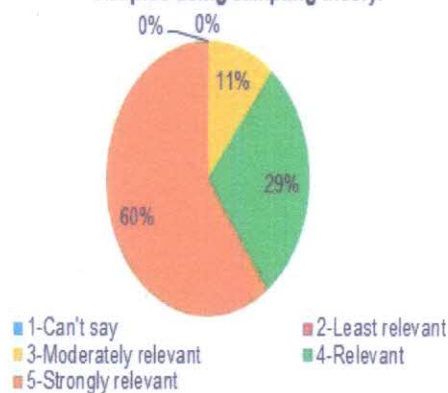
CO3. Apply the concept of Z-transform and its inverse in engineering problems.



CO3. Apply the concept of Z-transform and its inverse in engineering problems.

Score	No. of Students	Percentage (%)
1-Can't say	0	0
2-Least relevant	1	1.53
3-Moderately relevant	6	9.23
4-Relevant	19	29.23
5-Strongly relevant	39	60
Total	65	100

CO4. Apply the concept of probability distribution to engineering problems and testing hypothesis of small samples using sampling theory.



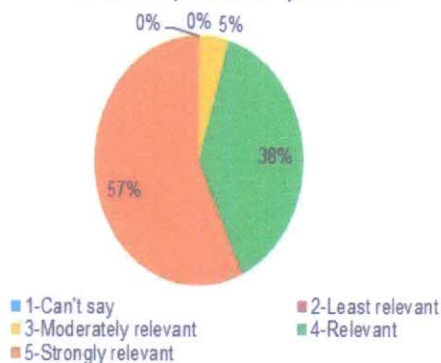
CO4. Apply the concept of probability distribution to engineering problems and testing hypothesis of small samples using sampling theory.

Score	No. of Students	Percentage (%)
1-Can't say	0	0
2-Least relevant	0	0
3-Moderately relevant	7	10.75
4-Relevant	19	29.23
5-Strongly relevant	39	60
Total	65	100



Department of Information Technology
Academic Year: 2020-2021(EVEN SEM)
Course Exit Analysis Report (SemIV)
Subject: EM-IV
Subject In-charge: Prof.Vasudeo Nazirkar

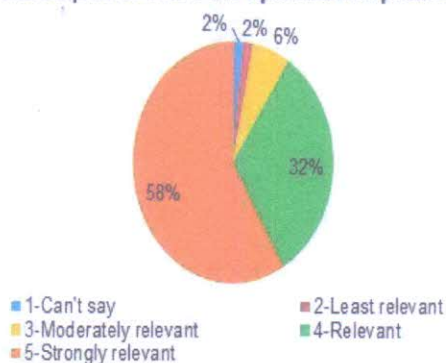
CO5. Apply the concept of Linear programming to solve the optimization problems .



CO5. Apply the concept of Linear programming to solve the optimization problems .

Score	No. of Students	Percentage (%)
1-Can't say	0	0
2-Least relevant	0	0
3-Moderately relevant	3	4.61
4-Relevant	25	38.46
5-Strongly relevant	37	56.92
Total	65	100

CO6. Use the Non-Linear programming techniques to solve the optimization problem.



CO6. Use the Non-Linear programming techniques to solve the optimization problem.

Score	No. of Students	Percentage (%)
1-Can't say	1	1.54
2-Least relevant	1	1.54
3-Moderately relevant	4	6.15
4-Relevant	21	32.3
5-Strongly relevant	38	58.46
Total	65	100

Mahesh
HOD

HOD
Department of
Information Technology

Vijay
PRINCIPAL

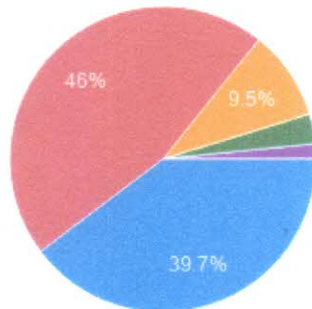
Saraswati College of Engineering
Kharghar, Navi Mumbai - 410 210.



Department of Information Technology
Academic Year: 2020-2021(EVEN SEM I)
Course Exit Analysis Report (SemIV)
Subject: OS
Subject In-charge: Prof. Snehal Lohi.

1. Understand the basic concepts related to Operating System.

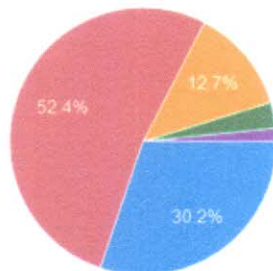
63 responses



Score	No. of students	Percentage
1- Can't say	1	1.64%
2- Hardly	2	3.28%
3- Moderately	6	9.84%
4- Mostly	28	45.90%
5- Definitely	26	42.62%
Total	63	100.00%

2. Describe the process management policies and illustrate scheduling of processes by CPU.

63 responses



Score	No. of students	Percentage
1- Can't say	1	1.64%
2- Hardly	2	3.28%
3- Moderately	8	13.11%
4- Mostly	33	54.10%
5- Definitely	19	31.15%
Total	63	100.00%



Department of Information Technology

Academic Year: 2020-2021(EVEN SEM)

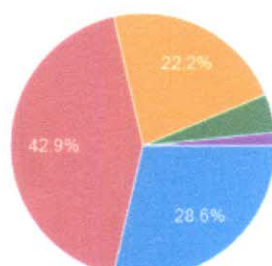
Course Exit Analysis Report (SemIV)

Subject: OS

Subject In-charge: Prof. Snehal Lohi.

3. You can explain and apply synchronization primitives and evaluate deadlock conditions handled by Operating System.

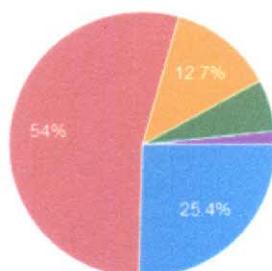
63 responses



Score	No. of students	Percentage
1- Can't say	1	1.64%
2- Hardly	3	4.92%
3- Moderately	14	22.95%
4- Mostly	27	44.26%
5- Definitely	18	29.51%
Total	63	100.00%

4. Describe and analyze memory allocation and management functions of Operating System.

63 responses



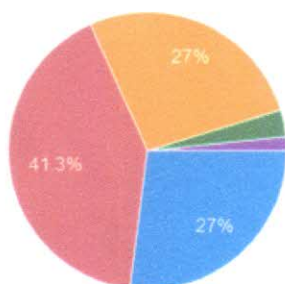
Score	No. of students	Percentage
1- Can't say	1	1.64%
2- Hardly	4	6.56%
3- Moderately	8	13.11%
4- Mostly	34	55.74%
5- Definitely	16	26.23%
Total	63	100.00%



Department of Information Technology
Academic Year: 2020-2021 (EVEN SEM)
Course Exit Analysis Report (SemIV)
Subject: OS
Subject In-charge: Prof. Snehal Lohi.

5. Analyze and Evaluate the services provided by Operating System for Storage Management.

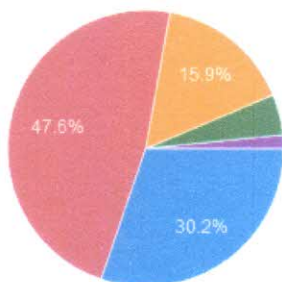
63 responses



Score	No. of students	Percentage
1- Can't say	1	1.64%
2- Hardly	2	3.28%
3- Moderately	17	27.87%
4- Mostly	26	42.62%
5- Definitely	17	27.87%
Total	63	100.00%

6. Compare the functions of various special-purpose Operating Systems.

63 responses



Score	No. of students	Percentage
1- Can't say	1	1.64%
2- Hardly	3	4.92%
3- Moderately	10	16.39%
4- Mostly	30	49.18%
5- Definitely	19	31.15%
Total	63	100.00%

Mahesh
HOD

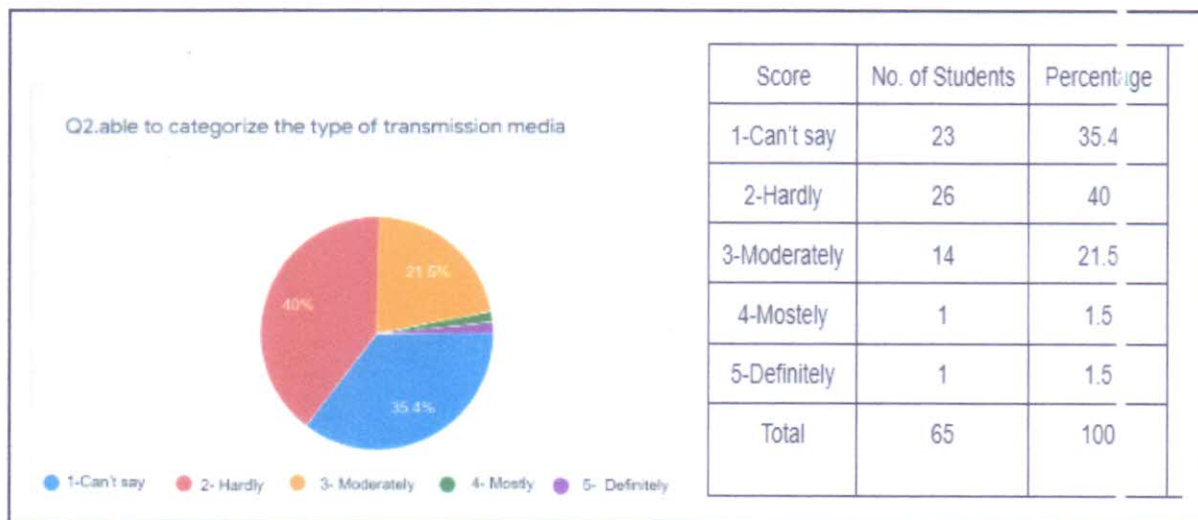
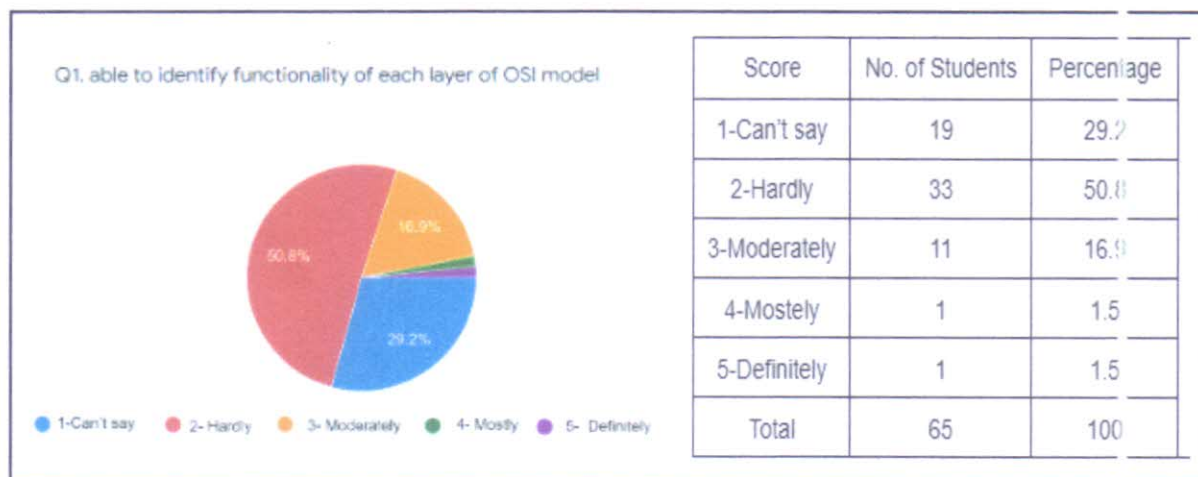
HOD
Department of
Information Technology

[Signature]
PRINCIPAL

Principal
Saraswati College of Engineering
Kharghar, Navi Mumbai - 410 210.

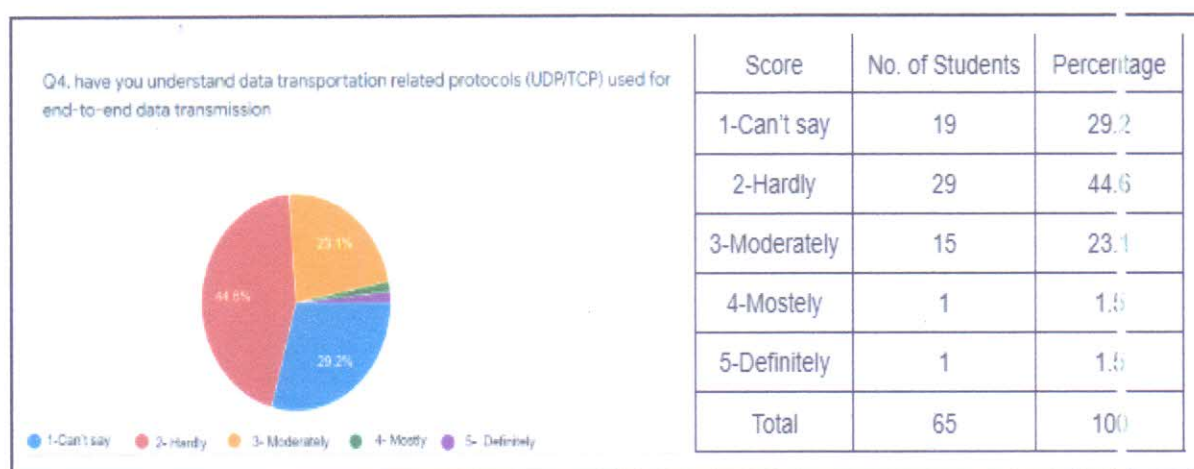
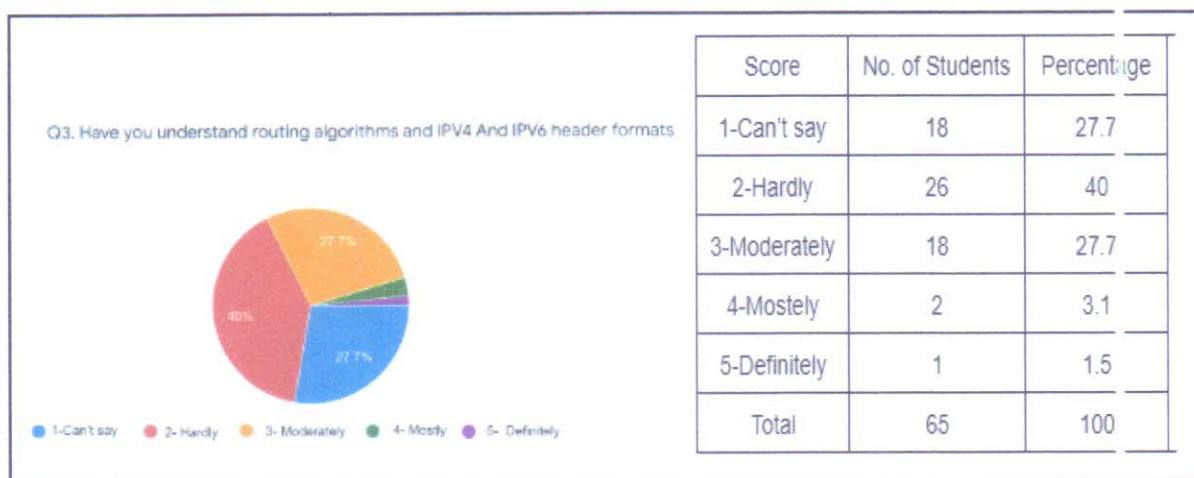


Department of Information Technology
Academic Year: 2020-2021 (EVEN SEM)
Course Exit Analysis Report (SemIV)
Subject: CN
Subject In-charge: Prof. Vaishali Jadhav.



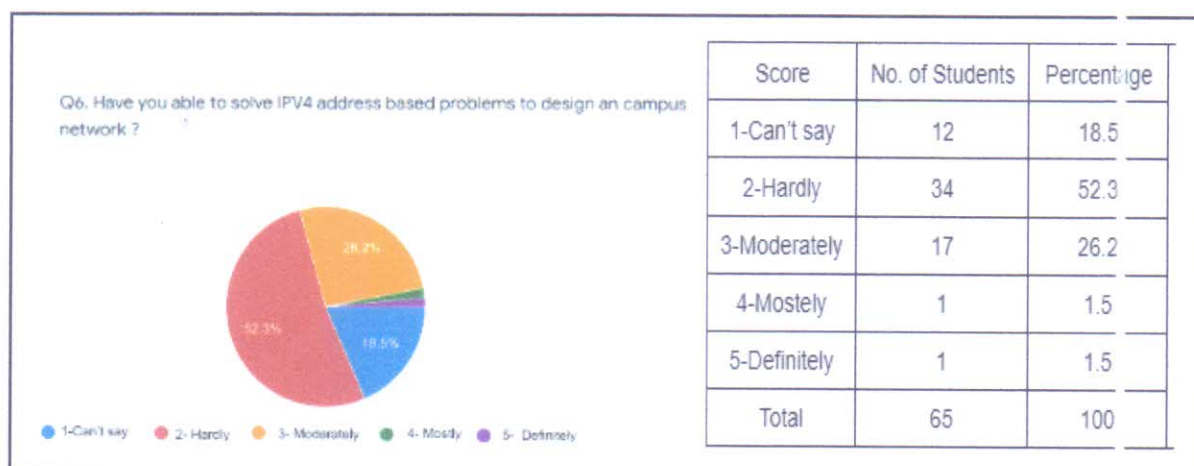
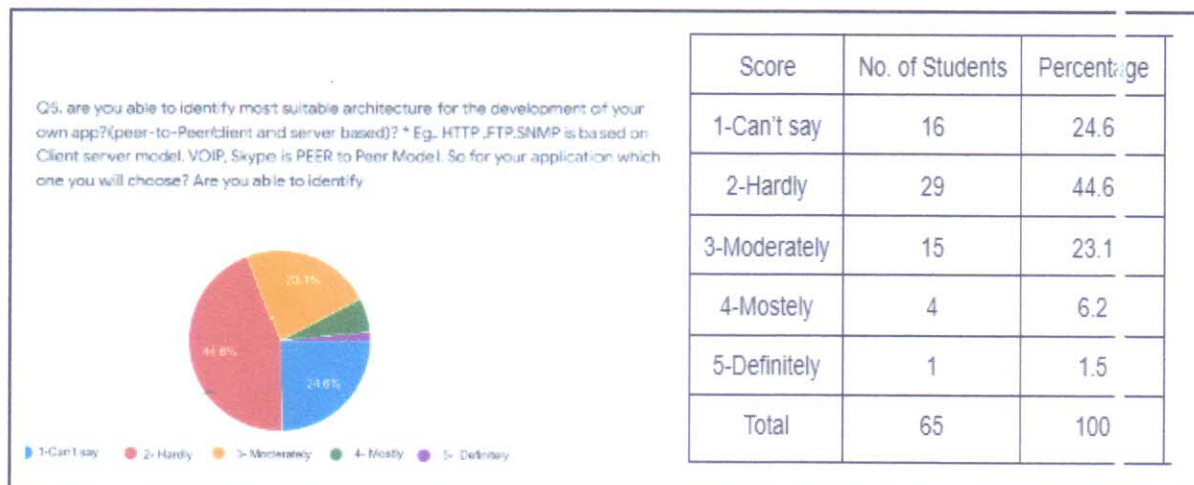


Department of Information Technology
Academic Year: 2020-2021 (EVEN SEM)
Course Exit Analysis Report (SemIV)
Subject: CN
Subject In-charge: Prof. Vaishali Jadhav.





Department of Information Technology
Academic Year: 2020-2021 (EVEN SEM)
Course Exit Analysis Report (SemIV)
Subject: CN
Subject In-charge: Prof. Vaishali Jadhav.



Mahesh
HOD

HOD
Department of
Information Technology

Uj
PRINCIPAL

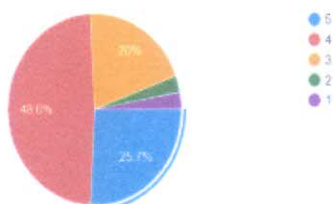
Principal
Saraswati College of Engineering
Kharghar, Navi Mumbai - 410 210.



Department of Information Technology
Academic Year: 2020-2021 (EVEN SEM)
Course Exit Analysis Report (SemIV)
Subject: COA
Subject In-charge: Prof. ANURADHA DANDAVATE.

1. Apply the knowledge of Number system conversion techniques to solve problems and can apply basic engineering fundamentals to Demonstrate the fundamentals of Digital Logic Design

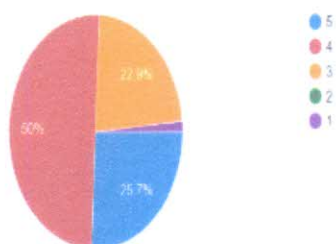
70 responses



Score	No. of Students	Percentage (%)
1- Can't Say	2	2.85
2 - Hardly	2	2.85
3- Moderately	14	20
4- Mostly	34	48.6
5- Definitely	18	25.7
Total	70	100

2. Describe and differentiate basic organization of computer, the architecture of 8086 microprocessor and to implement assembly language programming for 8086 microprocessors. Compare and contrast the instructions of 8086 to select appropriate instructions as per given task. Analyze and interpret the result of ALP using integrated tool.

70 responses



Score	No. of Students	Percentage (%)
1- Can't Say	1	1
2 - Hardly	0	0
3- Moderately	16	23
4- Mostly	35	50
5- Definitely	18	26
Total	70	100



Department of Information Technology

Academic Year: 2020-2021 (EVEN SEM)

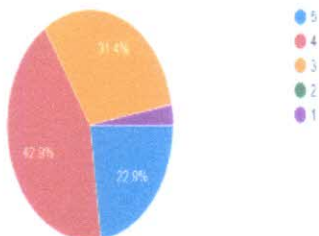
Course Exit Analysis Report (SemIV)

Subject: COA

Subject In-charge: Prof. ANURADHA DANDAVATE.

3. Demonstrate control unit operations and conceptualize instruction level parallelism.
 Describe Soft wired (Microprogrammed) and hardwired control unit design methods,
 Microinstruction sequencing and execution.

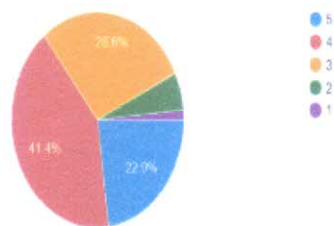
70 responses



Score	No. of Students	Percentage (%)
1- Can't Say	1	1
2 - Hardly	0	0
3- Moderately	22	33
4- Mostly	31	43
5- Definitely	16	23
Total	70	100

4. List and Identify integers and real numbers and perform computer arithmetic operations on integers. Identify mathematical algorithmic knowledge that applies to solve a given problem.

70 responses



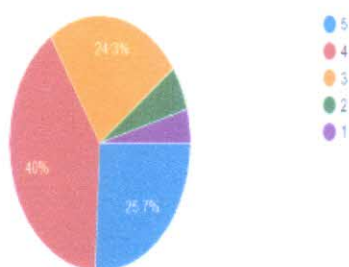
Score	No. of Students	Percentage (%)
1- Can't Say	1	1
2 - Hardly	2	4
3- Moderately	21	29
4- Mostly	30	43
5- Definitely	16	23
Total	70	100



Department of Information Technology
Academic Year: 2020-2021 (EVEN SEM)
Course Exit Analysis Report (SemIV)
Subject: COA
Subject In-charge: Prof. ANURADHA DANDAVATE.

5. Categorize memory organization. Identify basic functionalities of each element of a memory hierarchy.

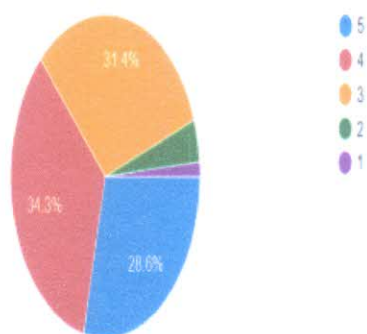
70 responses



Score	No. of Students	Percentage (%)
1- Can't Say	1	4
2 - Hardly	2	4
3- Moderately	21	25
4- Mostly	30	40
5- Definitely	16	27
Total	70	100

6. Examine the different methods for computer I/O mechanism. Compare and contrast alternative methods of data transfer to select the best methods.

70 responses



Score	No. of Students	Percentage (%)
1- Can't Say	1	1
2 - Hardly	2	3
3- Moderately	21	32
4- Mostly	30	35
5- Definitely	16	29
Total	70	100

Mahar
HOD

HOD
Department of
Information Technology

Principal
PRINCIPAL

Principal
Saraswati College of Engineering
Kharghar, Navi Mumbai - 410 210.



Department of Information Technology
Action taken based on feedback from students (CO & PO)
Academic year 2020-21 - EVEN

Summary of feedback -Semester 4:

Feedbacks collected through course exit forms were analyzed and necessary actions which are useful for students were planned and conducted. Abstract of suggestions obtained from the stakeholders to enhance the employability of the student are discussed below.

- Some more basic concepts should be added in syllabus like programming.
- Need awareness about latest technologies in industries.
- Need video's for better understanding of concepts.
- Need some extra lectures for mathematics problem solving and practice.

Action Taken:

Based on suggestions, various events are organized, Events are selected such that it will be beneficial for their career. Details of events organized at Institutional and Department level are mentioned below.

Sr No.	Feedback / Suggestions	Action taken	Date
1	Latest technologies in industries	Seminar on Machine Learning	1/7/2020
2	Students are expecting the Problem based Questions to be included in the syllabus. More Numericals are Required to be solved	Numerical based on Scheduling Algorithm. https://youtu.be/YzBBJYfw_dj8 https://youtu.be/yKD3pcFvGmY https://drive.google.com/file/d/12pnuJCM6styEMWSNy	As Required



SARASWATI Education Society's
SARASWATI College of Engineering

Learn Live Achieve and Contribute
Kharghar, Navi Mumbai - 410 210.

		z86vBZeS9dJamBT/view?usp=drive_web&authuser=0 https://drive.google.com/file/d/1FTYNd9aGhEZGx9sZ2Y03flw98SoLCoSs/view?usp=drive_web&authuser=0	
3	More practice problems for AM IV	Extra classes were taken for AM IV	As Required

Mabe
HOD

HOD
Department of
Information Technology

U7
PRINCIPAL

Principal
Saraswati College of Engineering
Kharghar, Navi Mumbai - 410 210.



SARASWATI Education Society's
SARASWATI College of Engineering

Learn Live Achieve and Contribute

Kharghar, Navi Mumbai - 410 210.

Department of Information Technology

Academic Year: 2020-2021(ODD SEM)

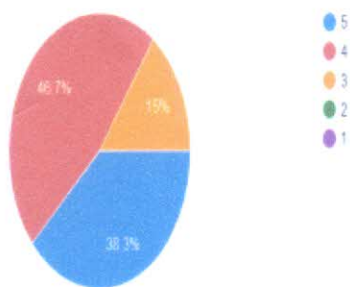
Course Exit Analysis Report (Sem V)

Subject: MEP

Subject In-charge: Prof.ANURADHA DANDWATE

1. Explain the architecture and design metrics of Embedded System. Classify the embedded systems.

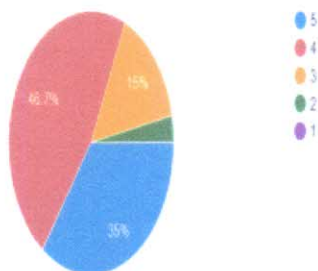
60 responses



Score	No. of Students	Percentage (%)
1- Can't Say	0	0
2 - Hardly	0	0
3- Moderately	9	15
4- Mostly	28	47
5- Definitely	23	38
Total	60	100

2. Explain the architecture of 8051 microcontroller and the instructions of 8051 to implement the assembly language program. Compare and contrast the instructions of 8051 to select appropriate instructions as per given task. Analyze and interpret the result of ALP using integrated tool.

60 responses



Score	No. of Students	Percentage (%)
1- Can't Say	0	0
2 - Hardly	2	3
3- Moderately	9	15
4- Mostly	28	47
5- Definitely	21	35
Total	60	100



SARASWATI Education Society's
SARASWATI College of Engineering

Learn Live Achieve and Contribute

Kharghar, Navi Mumbai - 410 210.

Department of Information Technology

Academic Year: 2020-2021(ODD SEM)

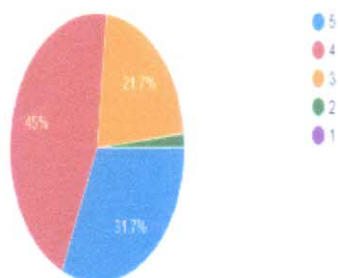
Course Exit Analysis Report (Sem V)

Subject: MEP

Subject In-charge: Prof.ANURADHA DANDWATE.

3. Design interfacing of 8051 with various Input /Output devices. Able to refine architecture design into detailed design using microcontroller, memory chip or different peripheral ICs within existing constraints.

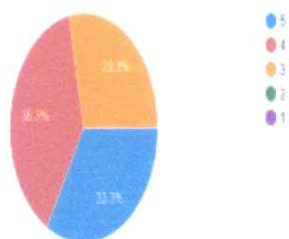
60 responses



Score	No. of Students	Percentage (%)
1- Can't Say	0	0
2 - Hardly	1	1
3- Moderately	13	22
4- Mostly	27	45
5- Definitely	19	32
Total	60	100

4. Explain the architecture of ARM processor. Apply the instructions of ARM to implement the assembly language program. Analyses and interpret the result of ALP using integrated tool.

60 responses



Score	No. of Students	Percentage (%)
1- Can't Say	0	0
2 - Hardly	0	0
3- Moderately	17	29
4- Mostly	23	38
5- Definitely	20	33
Total	60	100



SARASWATI Education Society's
SARASWATI College of Engineering

Learn Live Achieve and Contribute

Kharghar, Navi Mumbai - 410 210.

Department of Information Technology

Academic Year: 2020-2021(ODD SEM)

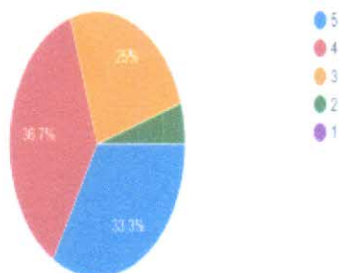
Course Exit Analysis Report (Sem V)

Subject: MEP

Subject In-charge: Prof.ANURADHA DANDWATE.

5. Explain the architecture of RTOS. Identify basic functionalities of RTOS and computing resources.

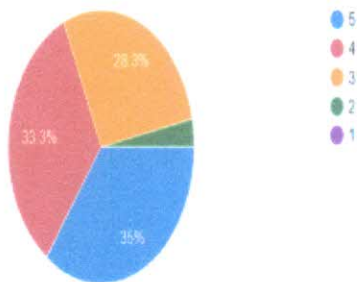
60 responses



Score	No. of Students	Percentage (%)
1- Can't Say	0	0
2 - Hardly	2	3
3- Moderately	16	25
4- Mostly	22	37
5- Definitely	20	33
Total	60	100

6. Explain various target boards of Embedded System. Compare and contrast the various target boards to select appropriate target board as per given application.

60 responses



Score	No. of Students	Percentage (%)
1- Can't Say	0	0
2 - Hardly	0	0
3- Moderately	18	29
4- Mostly	20	33
5- Definitely	22	35
Total	60	100

Mahesh
HOD

HOD
Department of
Information Technology

Principal
PRINCIPAL

Principal
Saraswati College of Engineering
Kharghar, Navi Mumbai - 410 210.



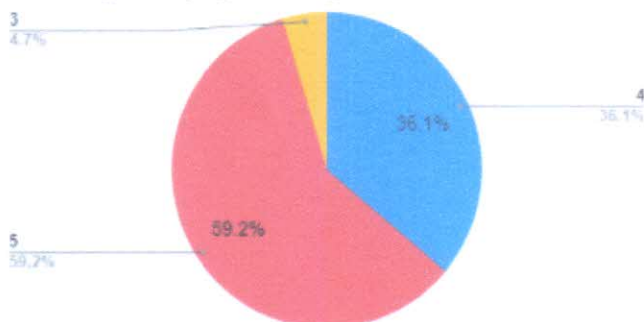
SARASWATI Education Society's
SARASWATI College of Engineering

Learn Live Achieve and Contribute

Kharghar, Navi Mumbai - 410 210.

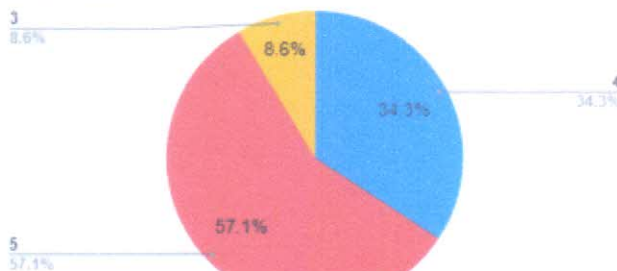
Department of Information Technology
Academic Year: 2020-2021(ODD SEM)
Course Exit Analysis Report (SemV)
Subject: IP
Subject In-charge: Prof.Ragini Sharma.

CO1- Discuss basic web designing concept for creating web pages using HTML and CSS.



Score	No. of Students	Percentage
1-Can't Say	0	0%
2- Definitely	0	0%
3-Hardly	5	4.7%
4-Moderately	30	36.1%
5-Mostly	38	59.2%
Total	73	100%

CO2- Discuss programming concepts of HTML5 and CSS3.



Score	No. of Students	Percentage
1-Can't Say	0	0%
2- Definitely	0	0%
3-Hardly	10	8.6%
4-Moderately	27	34.3%
5-Mostly	36	57.1%
Total	73	100%



SARASWATI Education Society's
SARASWATI College of Engineering

Learn Live Achieve and Contribute

Kharghar, Navi Mumbai - 410 210.

Department of Information Technology

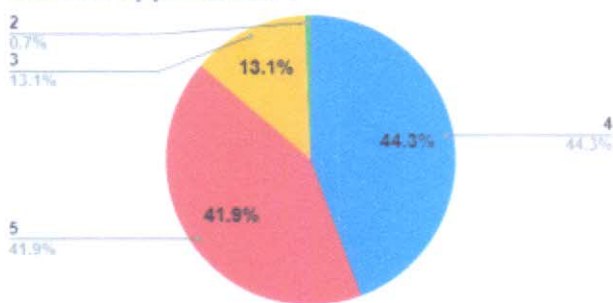
Academic Year: 2020-2021(ODD SEM)

Course Exit Analysis Report (Sem V)

Subject: IP

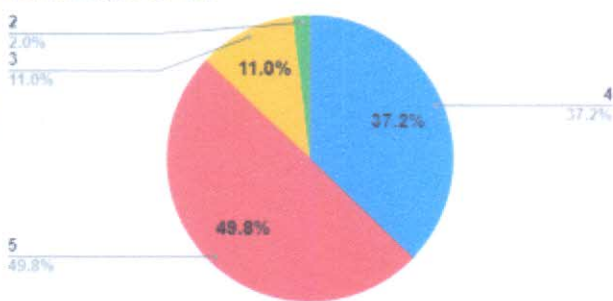
Subject In-charge: Prof.Ragini Sharma.

CO3- Identify the characteristics of rich internet applications .



Score	No. of Students	Percentage
1-Can't Say	0	0%
2- Definitely	1	0.7%
3-Hardly	14	13.1%
4-Moderately	33	44.3%
5-Mostly	25	41.9%
Total	73	100%

CO4- Create PHP database connectivity for data interaction



Score	No. of Students	Percentage
1-Can't Say	0	0%
2- Definitely	3	2%
3-Hardly	11	11%
4-Moderately	29	37.2%
5-Mostly	30	49.8%
Total	73	100%



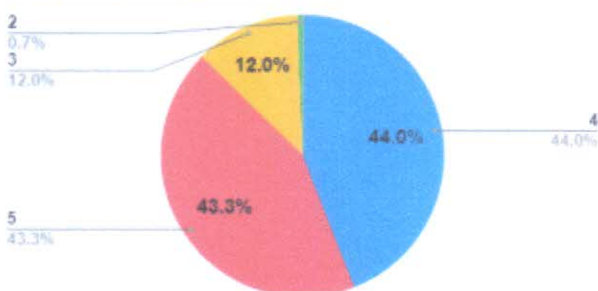
SARASWATI Education Society's
SARASWATI College of Engineering

Learn Live Achieve and Contribute

Kharghar, Navi Mumbai - 410 210.

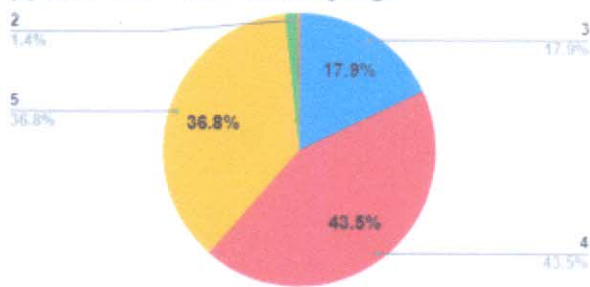
Department of Information Technology
Academic Year: 2020-2021(ODD SEM)
Course Exit Analysis Report (Sem V)
Subject: IP
Subject In-charge: Prof.Ragini Sharma.

CO5- Explore and compare different web services and extensions.



Score	No. of Students	Percentage
1-Can't Say	0	0
2- Definitely	1	0.7%
3-Hardly	13	12%
4-Moderately	33	44%
5-Mostly	26	43.3%
Total	73	100%

CO6- Integrate web designing modules using python web framework Django



Score	No. of Students	Percentage
1-Can't Say	1	0.4%
2- Definitely	2	1.4%
3-Hardly	18	17.9%
4-Moderately	31	43.5%
5-Mostly	21	36.8%
Total	73	100%

Mahesh
HOD

HOD
Department of
Information Technology

UP
PRINCIPAL

Principal
Saraswati College of Engineering
Kharghar, Navi Mumbai - 410 210.



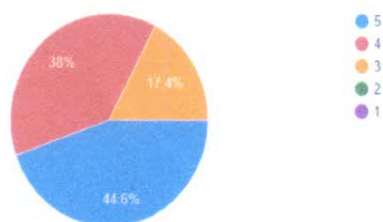
SARASWATI Education Society's
SARASWATI College of Engineering

Learn Live Achieve and Contribute

Kharghar, Navi Mumbai - 410 210.

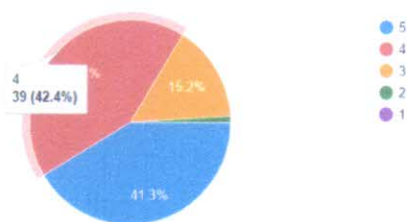
Department of Information Technology
Academic Year: 2020-2021(ODD SEM)
Course Exit Analysis Report (Sem V)
Subject: CNS
Subject In-charge: Prof. NAVDEEP BAGGA

Q1. Understand security objectives and apply the knowledge of mathematical concepts, matrix and numerical techniques and also study of various encryption techniques.



score	no of students	percentage
1-Can't say	0	0
2-Hardly	0	0
3-Moderately	8	17.40%
4-Mostly	17	37%
5-definitely	21	44.60%
Total	46	100

Q2. Understand and Apply theory and principles of computer science and engineering. Design various secure cryptographic applications.



score	No of students	percentage
1-Can't say	0	0
2-Hardly	1	1.50%
3-Moderately	7	15.20%
4-Mostly	20	42%
5-definitely	18	41.30%
Total	46	100



SARASWATI Education Society's
SARASWATI College of Engineering

Learn Live Achieve and Contribute

Kharghar, Navi Mumbai - 410 210.

Department of Information Technology

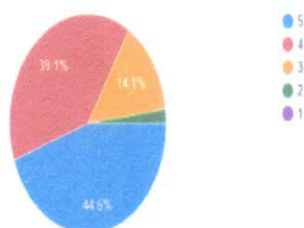
Academic Year: 2020-2021(ODD SEM)

Course Exit Analysis Report (Sem V)

Subject: CNS

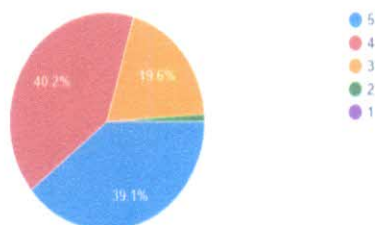
Subject In-charge: Prof. NAVDEEP BAGGA

Q3. Create, modify and extend techniques to provide security. Evaluate various techniques to provide protection of the public.



score	No of students	percentage
1-Can't say	0	0
2-Hardly	1	2.20%
3-Moderately	6	14.10%
4-Mostly	18	39%
5-definitely	21	44.60%
Total	46	100

Q4. Use appropriate procedures and techniques to analyse data authentication. Apply authentication schemes for protection of public.



score	No of students	percentage
1-Can't say	0	0
2-Hardly	1	2.10%
3-Moderately	9	19.60%
4-Mostly	19	40%
5-definitely	17	39.10%
Total	46	100



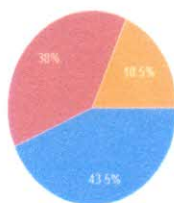
SARASWATI Education Society's
SARASWATI College of Engineering

Learn Live Achieve and Contribute

Kharghar, Navi Mumbai - 410 210.

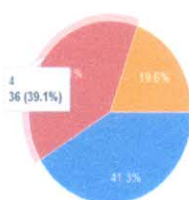
Department of Information Technology
Academic Year: 2020-2021(ODD SEM)
Course Exit Analysis Report (Sem V)
Subject: CNS
Subject In-charge: Prof. NAVDEEP BAGGA

Q5. Apply principles of preventive engineering to prevent from various type of attacks in OSI model. Evaluate the performance and application of firewall and IDS in network security.



score	No of students	percentage
1-Can't say	0	0
2-Hardly	0	0
3-Moderately	9	18.50%
4-Mostly	17	38%
5-definitely	20	43.50%
Total	46	100

Q6. Explore design issues and working principles of various secure communication standards including Kerberos, IPsec, and SSL/TLS and email and apply them to provide security for professional concern.



score	no of students	percentage
1-Can't say	0	0
2-Hardly	0	0
3-Moderately	9	19.60%
4-Mostly	18	39%
5-definitely	19	41.30%
Total	46	100

Maloo
HOD

HOD
Department of
Information Technology

Principal
PRINCIPAL

Principal
Saraswati College of Engineering
Kharghar, Navi Mumbai - 410 210.



SARASWATI Education Society's SARASWATI College of Engineering

Learn Live Achieve and Contribute

Kharghar, Navi Mumbai - 410 210.

Department of Information Technology Academic Year: 2020-2021(ODD SEM) Course Exit Analysis Report (Sem V) Subject: ADS Subject In-charge: Prof. Maahi Khemchandani.

After Completing Course of Advanced Data Structure and Analysis of Algorithms, are you to,

1. Understand explore and analyze Analysis of Algorithm principles with their mathematical aspect and various methods like Substitution, Recursion Tree and Master Theorem to solve Recurrence Relation.

24 responses



Degree of Relevance:	No. Of Students	Percentage
1. Can't Say	0	0
2. Least Relevant	0	0
3. Moderately Relevant	3	11
4. Relevant	11	46
5. Strongly Relevant	10	43
Total	24	100

2. Discuss and Categorize the core values of advanced data Structure often including RBT Trees, AVL Trees, B+ Trees etc. Identify algorithms to perform numerous operations like Insertion, deletion on advanced data structure

24 responses



Degree of Relevance:	No. Of Students	Percentage
1. Can't Say	0	0
2. Least Relevant	0	0
3. Moderately Relevant	2	08
4. Relevant	9	38
5. Strongly Relevant	13	54
Total	24	100

3. Discuss the principles behind Divide and Conquer Algorithmic design strategy with its advantages. Illustrate various methods such as Binary Search Method, Merge Sort, Quick Sort, Strassen's Matrix Multiplication which uses Divide and Conquer Strategy.

24 responses



Degree of Relevance:	No. Of Students	Percentage
1. Can't Say	0	0
2. Least Relevant	0	0
3. Moderately Relevant	1	4
4. Relevant	9	38
5. Strongly Relevant	14	58
Total	24	100



SARASWATI Education Society's SARASWATI College of Engineering

Learn Live Achieve and Contribute

Kharghar, Navi Mumbai - 410 210.

Department of Information Technology

Academic Year: 2020-2021(ODD SEM)

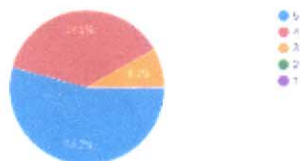
Course Exit Analysis Report (Sem V)

Subject: ADS

Subject In-charge: Prof. Maahi Khemchandani.

4. Discuss and represent the concept of Greedy Algorithmic design strategy. Illustrate various methods like Fractional Knapsack, Job Scheduling with deadline, MST which uses Greedy Algorithmic Strategy.

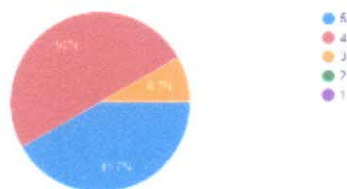
24 responses



Degree of Relevance:	No. Of Students	Percentage
1. Can't Say	0	0
2. Least Relevant	0	0
3. Moderately Relevant	2	8
4. Relevant	9	38
5. Strongly Relevant	13	54
Total	24	100

5. Investigate and explore the principles behind the concepts of Dynamic algorithms. difference between NP-Hard and NP-Complete. Apply adequacy of Dynamic algorithm in real life problem solving like 0/1 Knapsack, Travelling Salesman, Matrix Chain Multiplication, Optimal BST problem etc.

24 responses



Degree of Relevance:	No. Of Students	Percentage
1. Can't Say	0	0
2. Least Relevant	0	0
3. Moderately Relevant	2	8
4. Relevant	12	50
5. Strongly Relevant	10	42
Total	24	100



SARASWATI Education Society's
SARASWATI College of Engineering

Learn Live Achieve and Contribute

Kharghar, Navi Mumbai - 410 210.

Department of Information Technology

Academic Year: 2020-2021(ODD SEM)

Course Exit Analysis Report (SemV)

Subject: ADS

Subject In-charge: Prof. Maahi Khemchandani.

6. Recognise and use the appropriate string matching methods viz. the naive string matching, Rabin Karp, KMP, and Longest Common Subsequence (LCS) to design various pattern matching applications.

24 Responses



Degree of Relevance:	No. Of Students	Percentage
1. Can't Say	0	0
2. Least Relevant	0	0
3. Moderately Relevant	2	8
4. Relevant	11	46
5. Strongly Relevant	11	46
Total	24	100


HOD

HOD
Department of
Information Technology


PRINCIPAL

Principal
Saraswati College of Engineering
Kharghar, Navi Mumbai - 410 210.

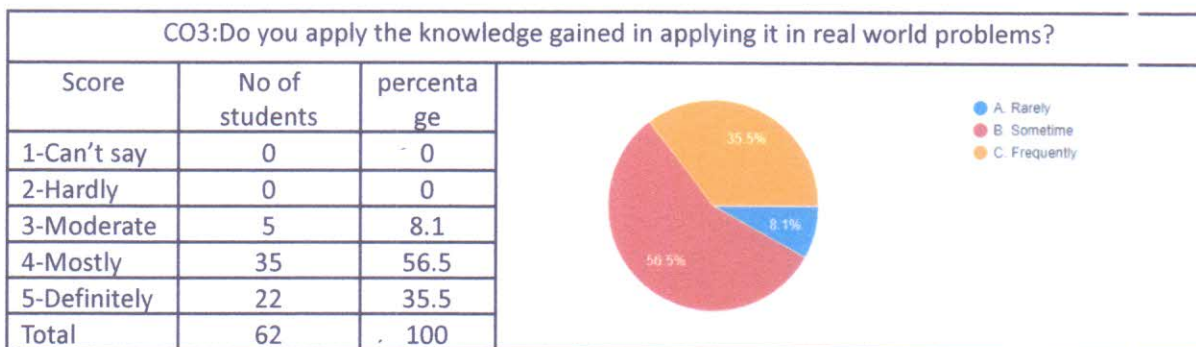
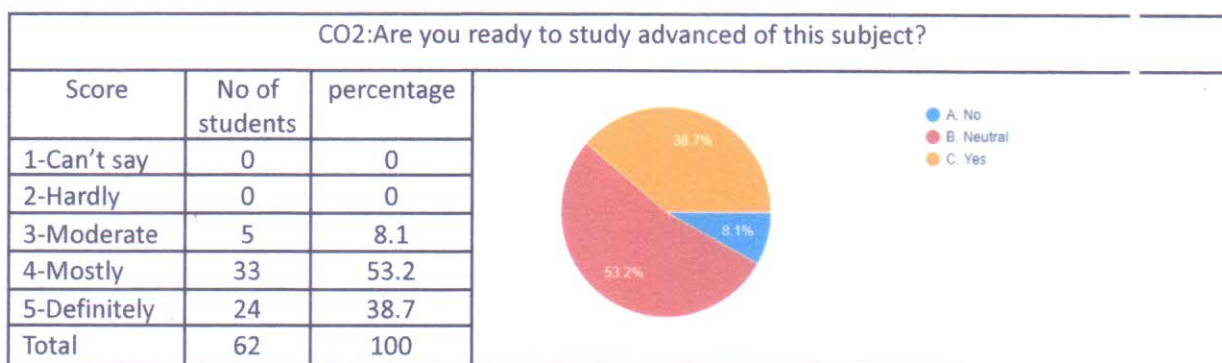
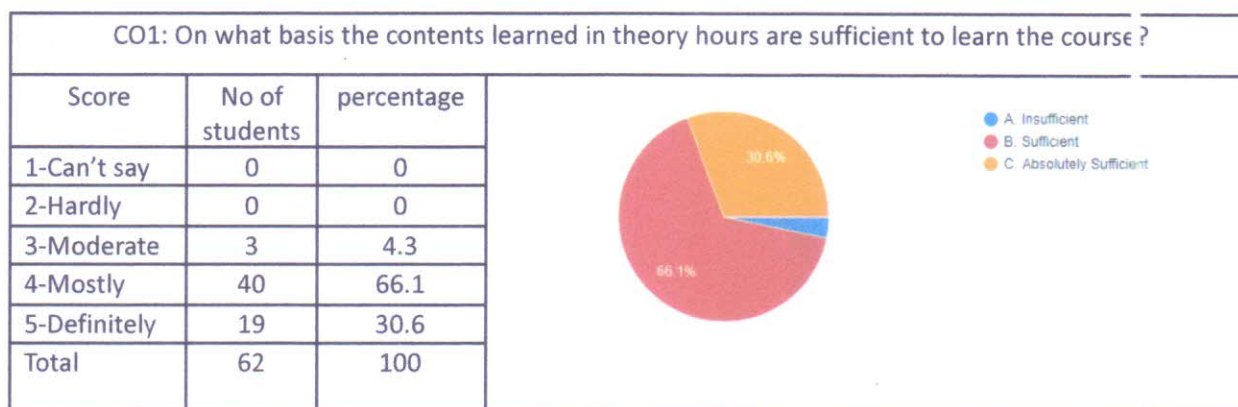


SARASWATI Education Society's
SARASWATI College of Engineering

Learn Live Achieve and Contribute

Kharghar, Navi Mumbai - 410 210.

Department of Information Technology
Academic Year: 2020-2021(ODD SEM)
Course Exit Analysis Report (Sem V)
Subject: ECBC
Subject In-charge: Prof. KIRTI M.





SARASWATI Education Society's
SARASWATI College of Engineering

Learn Live Achieve and Contribute

Kharghar, Navi Mumbai - 410 210.

Department of Information Technology

Academic Year: 2020-2021(ODD SEM)

Course Exit Analysis Report (Sem V)

Subject: ECBC

Subject In-charge: Prof. KIRTI M.

CO4: Did you understand the type of Ecommerce?			
Score	No of students	percentage	
1-Can't say	0	0	<p>88.7% 9.7% 1.6%</p> <p>● Neutral ● Yes ● No</p>
2-Hardly	0	0	
3-Moderate	6	9.7	
4-Mostly	54	88.7	
5-Definitely	2	2.6	
Total	62	100	

CO5: can you find the difference between ecommerce and ebuisness?			
Score	No of students	percentage	
1-Can't say	0	0	<p>90.3% 8.1% 1.6%</p> <p>● YES ● No ● MAY BE</p>
2-Hardly	0	0	
3-Moderate	55	90.3	
4-Mostly	5	8.1	
5-Definitely	2	2.6	
Total	62	100	

Molw
HOD

HOD
Department of
Information Technology

CH
PRINCIPAL

Principal
Saraswati College of Engineering
Kharghar, Navi Mumbai - 410 210.



SARASWATI Education Society's
SARASWATI College of Engineering

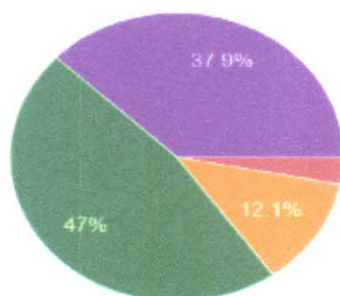
Learn Live Achieve and Contribute

Kharghar, Navi Mumbai - 410 210.

Department of Information Technology
Academic Year: 2020-2021(ODD SEM)
Course Exit Analysis Report (Sem V)
Subject: ADMT
Subject In-charge: Prof. Pragati Pejlekar

1. Understand and analyze measure of query cost
query execution

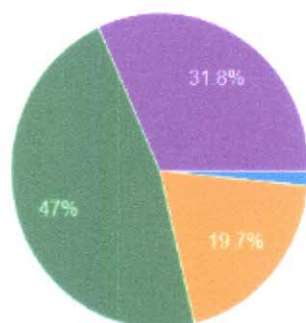
66 responses



Degree of Relevance:	No. Of Students	Percentage
1. Can't Say	0	0%
2. Least Relevant	2	3%
3. Moderately Relevant	8	12%
4. Relevant	31	47%
5. Strongly Relevant	25	38%
Total	66	100%

2. Understand the concept of transaction and discuss
control

66 responses



Degree of Relevance:	No. Of Students	Percentage
1. Can't Say	0	0%
2. Least Relevant	4	5%
3. Moderately Relevant	13	20%
4. Relevant	31	47%
5. Strongly Relevant	21	32%
Total	66	100%



SARASWATI Education Society's
SARASWATI College of Engineering

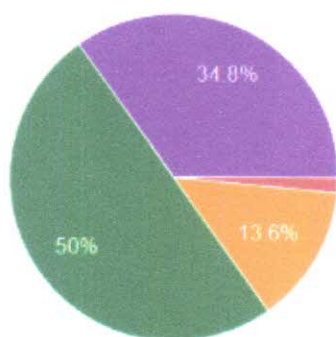
Learn Live Achieve and Contribute

Kharghar, Navi Mumbai - 410 210.

Department of Information Technology
Academic Year: 2020-2021(ODD SEM)
Course Exit Analysis Report (Sem V)
Subject: ADMT
Subject In-charge: Prof. Pragati Pejlekar

3. Discuss and categorize sophisticated access pr

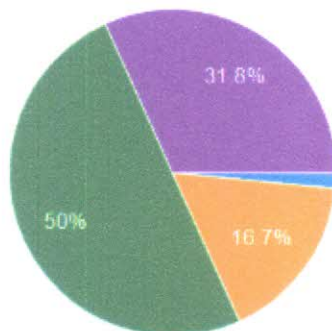
66 responses



Degree of Relevance:	No. Of Students	Percentage
1. Can't Say	0	0%
2. Least Relevant	1	2%
3. Moderately Relevant	9	14%
4. Relevant	33	50%
5. Strongly Relevant	23	35%
Total	66	100%

4. Understand and explore concept of distributed

66 responses



Degree of Relevance:	No. Of Students	Percentage
1. Can't Say	0	0%
2. Least Relevant	1	2%
3. Moderately Relevant	11	17%
4. Relevant	33	50%
5. Strongly Relevant	21	32%
Total	66	100%



SARASWATI Education Society's
SARASWATI College of Engineering

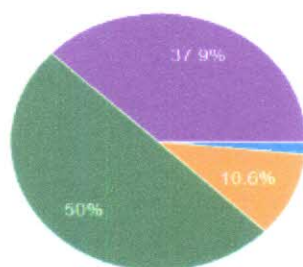
Learn Live Achieve and Contribute

Kharghar, Navi Mumbai - 410 210.

Department of Information Technology
Academic Year: 2020-2021(ODD SEM)
Course Exit Analysis Report (Sem V)
Subject: ADMT
Subject In-charge: Prof. Pragati Pejlekar

5. Understand explore and analyze concept of data wa
for analytics purpose

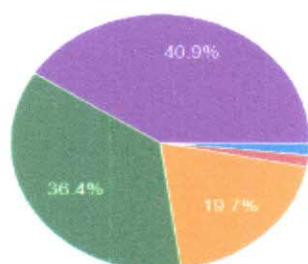
66 responses



Degree of Relevance:	No. Of Students	Percentage
1. Can't Say	0	0%
2. Least Relevant	0	0%
3. Moderately Relevant	8	11%
4. Relevant	33	50%
5. Strongly Relevant	25	38%
Total	66	100%

6 . Understand and analyze data using OLAP operation
process

66 responses



Degree of Relevance:	No. Of Students	Percentage
1. Can't Say	1	2%
2. Least Relevant	1	2%
3. Moderately Relevant	13	20%
4. Relevant	27	45%
5. Strongly Relevant	24	36%
Total	66	100%

Mahar
HOD

HOD
Department of
Information Technology

Pragati
PRINCIPAL

Principal
Saraswati College of Engineering
Kharghar, Navi Mumbai - 410 210.



SARASWATI Education Society's
SARASWATI College of Engineering

Learn Live Achieve and Contribute

Kharghar, Navi Mumbai - 410 210.

DEPARTMENT OF INFORMATION TECHNOLOGY

Action taken based on feedback from students

Academic Year 2020-21 ODD

Summary of feedback(Semester v):

Feedbacks collected through course exit were analysed and necessary actions were planned for effective teaching. Abstract of suggestions obtained from the stake holders to enhance the employability of the student are discussed below.

- Need animated videos for better understanding
- Exposure to add on courses to boost practical knowledge
- Need awareness about the latest technologies and practices in industry.

Action taken:

Based on suggestions, various events are organized. Events are selected such that it will be beneficial for their career. Details of events organized. Events are selected such that it will be beneficial for their career. Details of events organized at Institutional and department level are mentioned below

S.NO	PROGRAM	COURSE	FEEDBACK RECEIVED	ACTION TAKEN
1	IT	IP	Information on ReactJS	Provided content beyond syllabus
2	IT	CNS	Internet Security Protocols	https://www.youtube.com/watch?v=M60fjg6FcXk

Mahesh
HOD

HOD
Department of
Information Technology

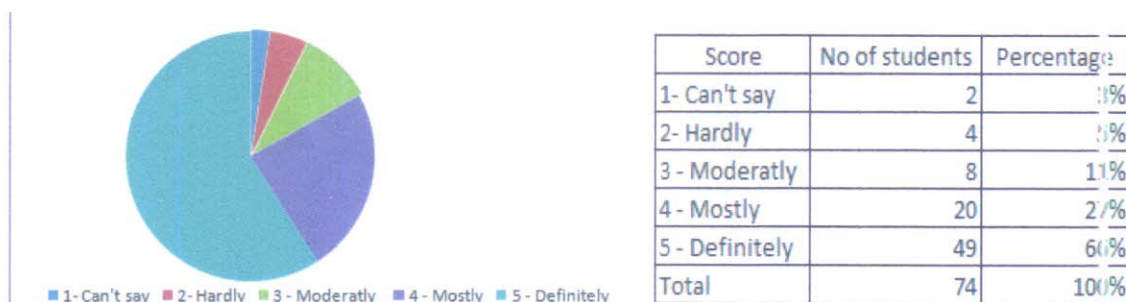
[Signature]
PRINCIPAL

Principal
Saraswati College of Engineering
Kharghar, Navi Mumbai - 410 210.

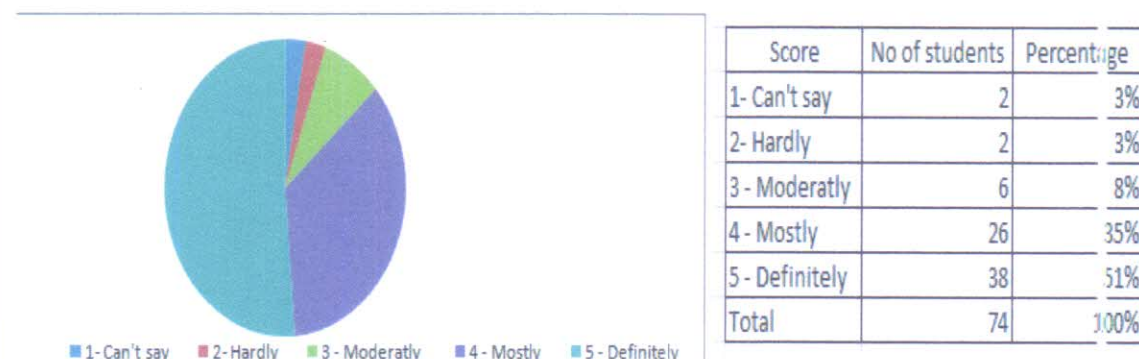


Department of Information Technology
Academic Year: 2020-2021(EVEN SEM)
Course Exit Analysis Report (Sem VI)
Subject: DMBI
Subject In-charge: Prof.Pragati P.

Understand the concept of data mining and its applications.



Understand and analyze the concept of data exploration and data preprocessing





SARASWATI College of Engineering

Learn Live Achieve and Contribute

Kharghar, Navi Mumbai - 410 210.

Department of Information Technology

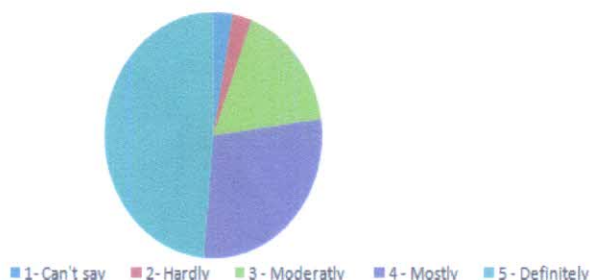
Academic Year: 2020-2021 (EVEN SEM)

Course Exit Analysis Report (Sem VI)

Subject: DMBI

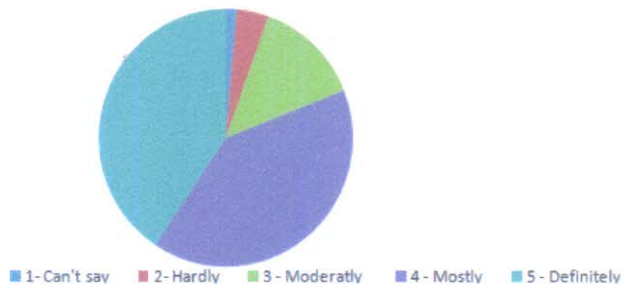
Subject In-charge: Prof.Pragati P.

Understand explore and analyze the concept of classification and its method.



Score	No of students	Percentage
1- Can't say	2	3%
2- Hardly	2	3%
3- Moderatly	12	16%
4- Mostly	20	27%
5- Definitely	34	46%
Total	74	100%

Understand explore and analyze the concept of clustering, outliers and its techniques



Score	No of students	Percentage
1- Can't say	1	1%
2- Hardly	3	4%
3- Moderatly	10	14%
4- Mostly	30	41%
5- Definitely	30	41%
Total	74	100%



SARASWATI College of Engineering

Learn Live Achieve and Contribute

Kharghar, Navi Mumbai - 410 210.

Department of Information Technology

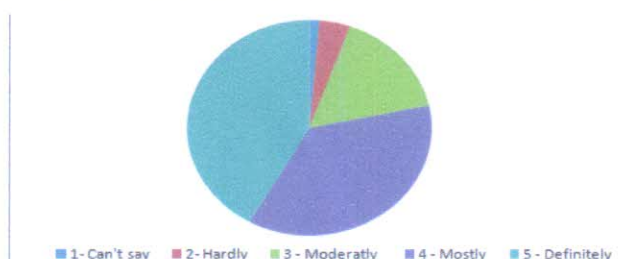
Academic Year: 2020-2021(EVEN SEM)

Course Exit Analysis Report (Sem VI)

Subject: DMBI

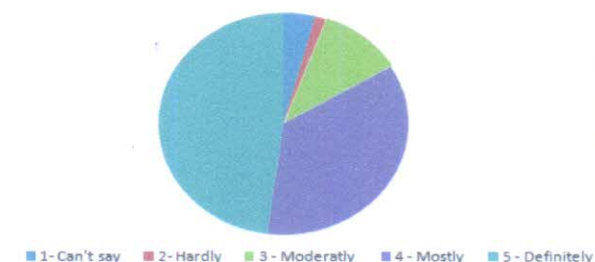
Subject In-charge: Prof.Pragati P.

5. Understand explore and analyze market basket analysis using frequent pattern mining .



Score	No of students	Percentage
1- Can't say	1	1%
2- Hardly	3	4%
3- Moderatly	12	16%
4- Mostly	27	36%
5- Definitely	31	42%
Total	74	100%

6.Understand the different BI tools and system used for decision making.



Score	No of students	Percentage
1- Can't say	3	4%
2- Hardly	1	1%
3- Moderatly	8	11%
4- Mostly	26	35%
5- Definitely	35	47%
Total	74	100%

Mahar
HOD

HOD

Department of
Information Technology

U7
PRINCIPAL

Principal
Saraswati College of Engineering
Kharghar, Navi Mumbai - 410 210.



SARASWATI Education Society's
SARASWATI College of Engineering

Learn Live Achieve and Contribute

Kharghar, Navi Mumbai - 410 210.

Department of Information Technology

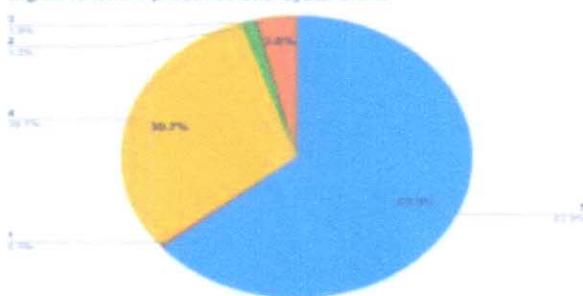
Academic Year: 2020-2021 (EVEN SEM)

Course Exit Analysis Report (Sem VI)

Subject: DF

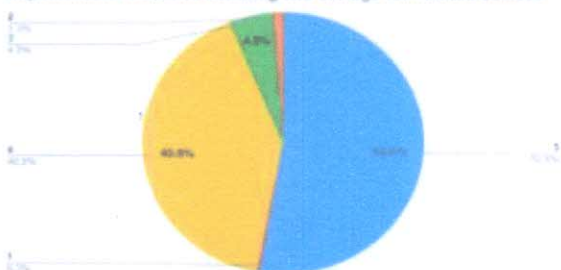
Subject In-charge: Prof.Ragini S.

CO1- Understand and apply theory and principles of computer science and engineering for techniques associated with the digital forensic practices and cyber crime



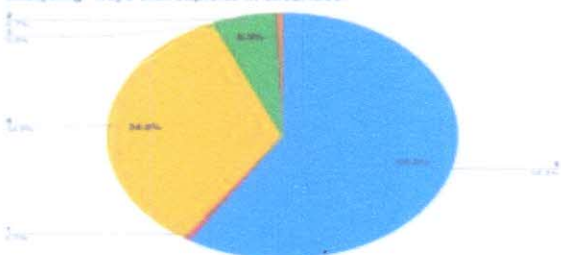
Score	No. of Students	Percentage
1-Can't Say	1	0.3%
2- Definitely	2	1.3%
3-Hardly	4	3.8%
4-Moderately	25	30.7%
5-Mostly	40	63.9%
Total	72	100%

CO2- Define a problem for purposes of investigation, its scope and importance of evidence handling and storage for various devices



Score	No. of Students	Percentage
1-Can't Say	1	0.3%
2- Definitely	2	1.3%
3-Hardly	5	4.9%
4-Moderately	30	40.8%
5-Mostly	34	52.6%
Total	72	100%

CO3- Identify and describe various engineering roles in understanding of current cyber security incident response and analyzing ways that exploits in securities.



Score	No. of Students	Percentage
1-Can't Say	1	0.7%
2- Definitely	1	0.7%
3-Hardly	6	5.9%
4-Moderately	26	34%
5-Mostly	36	58.8%
Total	72	100%



SARASWATI Education Society's
SARASWATI College of Engineering

Learn Live Achieve and Contribute

Kharghar, Navi Mumbai - 410 210.

Department of Information Technology

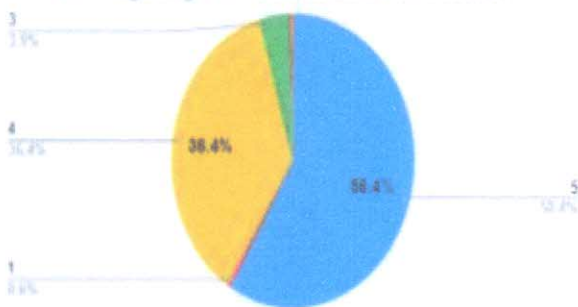
Academic Year: 2020-2021(EVEN SEM)

Course Exit Analysis Report (Sem VI)

Subject: DF

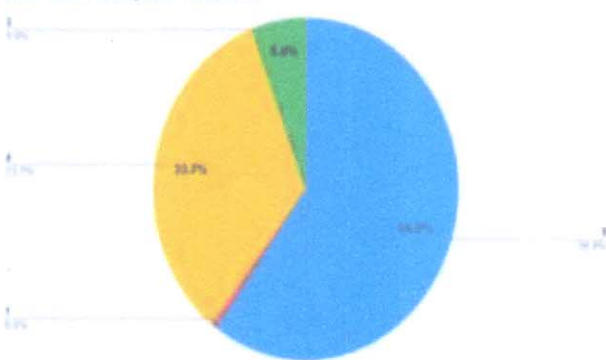
Subject In-charge: Prof.Ragini S.

CO4- Critically analyzing forensic duplicated data and investigating it for trends and correlations



Score	No. of Students	Percentage
1-Can't Say	1	0.6%
2- Definitely	1	0.6%
3-Hardly	6	3.9%
4-Moderately	28	36.4%
5-Mostly	36	58.4%
Total	72	100%

CO5- Use appropriate procedures, tools and techniques to collect data and investigate attacks, IDS technical exploits, router attacks and "Trap and Trace" computer networks.



Score	No. of Students	Percentage
1-Can't Say	2	0.6%
2- Definitely	0	0%
3-Hardly	6	5.8%
4-Moderately	27	33.7%
5-Mostly	37	59.9%
Total	72	100%



SARASWATI Education Society's
SARASWATI College of Engineering

Learn Live Achieve and Contribute

Kharghar, Navi Mumbai - 410 210.

Department of Information Technology

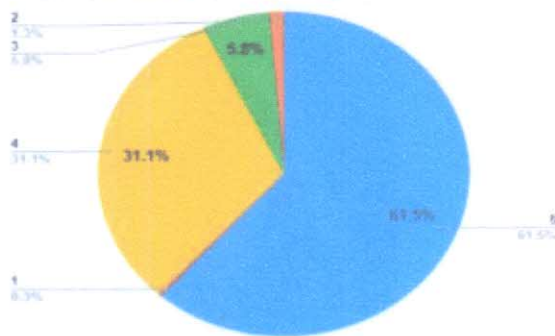
Academic Year: 2020-2021 (EVEN SEM)

Course Exit Analysis Report (Sem VI)

Subject: DF

Subject In-charge: Prof. Ragini S.

CO6- Identify the strengths and limitations of computer forensic tools and acquiring information for report writing



Score	No. of Students	Percentage
1-Can't Say	1	0.3%
2- Definitely	2	1.3%
3-Hardly	6	5.8%
4-Moderately	25	31.1%
5-Mostly	38	61.5%
Total	72	100%

M. S. Maloo
HOD

HOD
Department of
Information Technology

(Signature)
PRINCIPAL

Principal
Saraswati College of Engineering
Kharghar, Navi Mumbai - 410 210.



SARASWATI Education Society's
SARASWATI College of Engineering

Learn Live Achieve and Contribute

Kharghar, Navi Mumbai - 410 210.

Department of Information Technology

Academic Year: 2020-2021 (EVEN SEM)

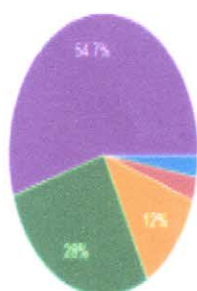
Course Exit Analysis Report (Sem VI)

Subject: CCS

Subject In-charge: Prof.Vrushali Thakur.

1. Understand the concept of clouding computing and services.

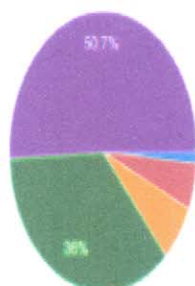
75 responses



Score	No of students	Percentage
1- Not at all	1	1.3
2- Not very Clearly	3	4
3-Satisfactory	9	12
4- Clearly	21	28
5- Very Clearly	41	54.7
Total	75	100

2. understand , analyze and implement concept of Virtualization

75 responses



Score	No of students	Percentage
1- Not at all	1	1.4
2- Not very Clearly	3	4
3-Satisfactory	6	8
4- Clearly	27	36
5- Very Clearly	38	50.6
Total	75	100



SARASWATI Education Society's
SARASWATI College of Engineering

Learn Live Achieve and Contribute

Kharghar, Navi Mumbai - 410 210.

Department of Information Technology

Academic Year: 2020-2021 (EVEN SEM)

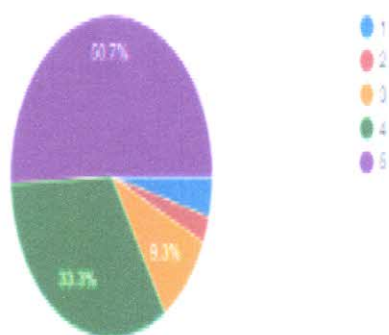
Course Exit Analysis Report (Sem VI)

Subject: CCS

Subject In-charge: Prof.Vrushali Thakur.

3. Understand and explore different services provided in cloud Computing.

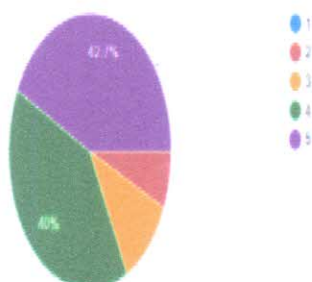
75 responses



Score	No of students	Percentage
1- Not at all	3	4
2- Not very Clearly	2	2.7
3-Satisfactory	7	9.3
4- Clearly	25	33.3
5- Very Clearly	38	50.7
Total	75	100

4. Understand and explore different programming support provided in Google App Engine and Mobile Cloud Computing.

75 responses



Score	No of students	Percentage
1- Not at all	0	0
2- Not very Clearly	4	5.3
3-Satisfactory	9	12
4- Clearly	30	40
5- Very Clearly	32	42.7
Total	75	100



SARASWATI Education Society's
SARASWATI College of Engineering

Learn Live Achieve and Contribute

Kharghar, Navi Mumbai - 410 210.

Department of Information Technology

Academic Year: 2020-2021 (EVEN SEM)

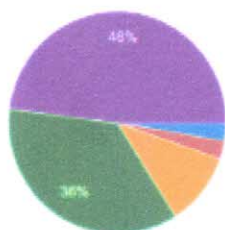
Course Exit Analysis Report (Sem VI)

Subject: CCS

Subject In-charge: Prof. Vrushali Thakur.

5. Understand and explore different components of cloud computing.

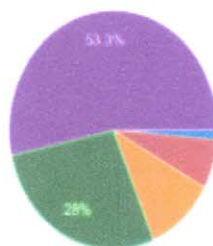
75 responses



Score	No of students	Percentage
1- Not at all	1	1
2- Not very Clearly	2	3
3-Satisfactory	9	12
4- Clearly	27	36
5- Very Clearly	36	48
Total	75	100

6. Understand different backup solutions and cloud data management.

75 responses



Score	No of students	Percentage
1- Not at all	0	0.3
2- Not very Clearly	5	6.4
3-Satisfactory	9	12
4- Clearly	21	28
5- Very Clearly	40	53.3
Total	75	100

Malek
HOD
HOD
Department of
Information Technology

Principal
Principal
Saraswati College of Engineering
Kharghar, Navi Mumbai - 410 210.



SARASWATI Education Society's
SARASWATI College of Engineering

Learn Live Achieve and Contribute

Kharghar, Navi Mumbai - 410 210.

Department of Information Technology

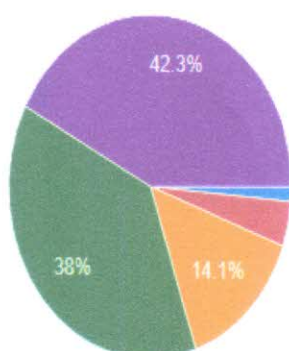
Academic Year: 2020-2021(EVEN SEM)

Course Exit Analysis Report (Sem VI)

Subject: SEPM

Subject In-charge: Prof.Kirti Mahamunkar.

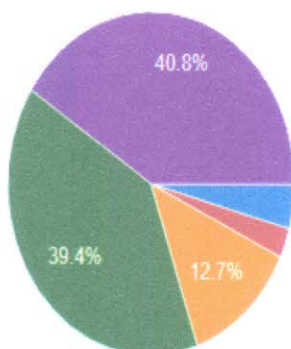
1. Understand the concept of software engineering and its process model.



1
2
3
4
5

1-cants say	1	1.5
2 Hardly	3	3
3- moderate	10	14.1
4-mostly	27	38%
5 Definitely	31	42%
total	71	100

2. Understand and analyze the requirement engineering.



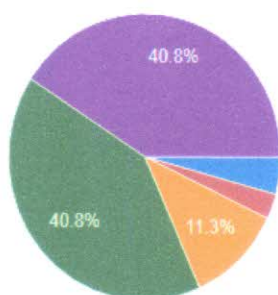
1
2
3
4
5

1-cants say	3	3
2 Hardly	2	2
3- moderate	9	12.7
4-mostly	28	39.4
5 Definitely	30	40.8
total	71	100



Department of Information Technology
Academic Year: 2020-2021 (EVEN SEM)
Course Exit Analysis Report (Sem VI)
Subject: SEPM
Subject In-charge: Prof.Kirti Mahamunkar.

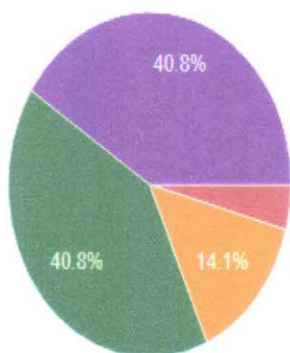
3. Understand the concept of classification and its methods UML diagram and draw for system.



● 1
● 2
● 3
● 4
● 5

score	no of student	Percentage
1-cants say	3	4
2 Hardly	2	2
3-moderate	8	11.3
4-mostly	29	40
5 Definitely	30	40.8
total	71	100

4. Understand explore and analyze the concept of software testing and its different techniques.



● 1
● 2
● 3
● 4
● 5

score	no of student	Percentage
1-cants say	0	0
2 Hardly	3	3
3- moderate	10	14.1
4-mostly	29	4.8%
5 Definitely	29	40.8
total	71	100%



SARASWATI Education Society's
SARASWATI College of Engineering

Learn Live Achieve and Contribute

Kharghar, Navi Mumbai - 410 210.

Department of Information Technology

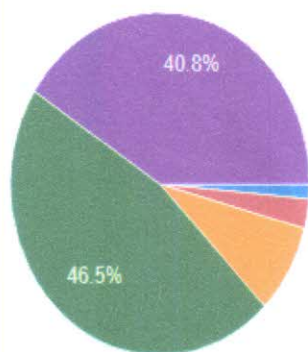
Academic Year: 2020-2021 (EVEN SEM)

Course Exit Analysis Report (Sem VI)

Subject: SEPM

Subject In-charge: Prof. Kirti Mahamunkar.

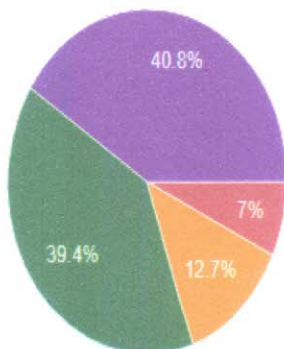
Understand explore and analyze project planning phase.



- 1
- 2
- 3
- 4
- 5

score	no of student	Percentage
1-cants say	1	1.4
2 Hardly	2	2.8
3-moderate	6	8.5
4-mostly	33	46.5
5 Definitely	29	40.8
total	71	100%

Understand the different Project scheduling tools for project timeline.



- 1
- 2
- 3
- 4
- 5

score	no of student	Percentage
1-cants say	0	0
2 Hardly	5	7
3- moderate	9	12.7
4-mostly	28	39.4
5 Definitely	29	40.8
total		100%

Mahamunkar
HOD

HOD
Department of
Information Technology

Uy
PRINCIPAL

Principal
Saraswati College of Engineering
Kharghar, Navi Mumbai - 410 210.



Department of Information Technology

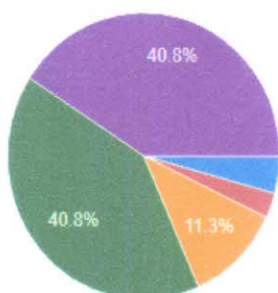
Academic Year: 2020-2021 (EVEN SEM)

Course Exit Analysis Report (Sem VI)

Subject: WN

Subject In-charge: Prof. Vaishali Jadhav.

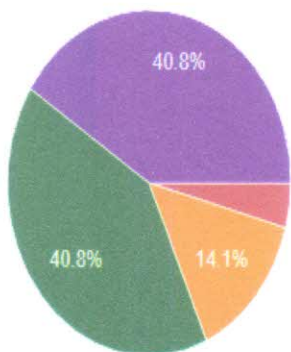
1. On what scale, contents learned in Theory are sufficient to understand course?



1
2
3
4
5

score	no of student	Percentage
1-cants say	3	4
2 Hardly	2	2
3-moderate	8	11.3
4-mostly	29	40
5 Definitely	30	40.8
total	71	100

2. Are you interested to study advanced contents of this subject?



1
2
3
4
5

score	no of student	Percentage
1-cants say	0	0
2 Hardly	3	3
3- moderate	10	14.1
4-mostly	29	40.8
5 Definitely	29	40.8
total	71	100%



SARASWATI Education Society's
SARASWATI College of Engineering

Learn Live Achieve and Contribute

Kharghar, Navi Mumbai - 410 210.

Department of Information Technology

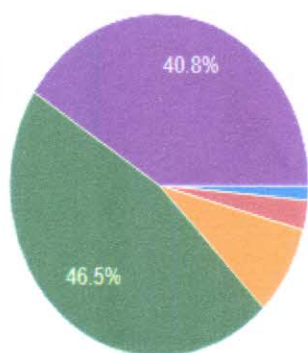
Academic Year: 2020-2021 (EVEN SEM)

Course Exit Analysis Report (Sem VI)

Subject: SEPM

Subject In-charge: Prof. Kirti Mahamunkar.

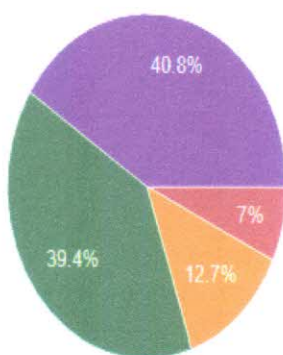
3. Do you believe you will be able to apply knowledge gained in this course in industry to solve real time problem?.



- 1
- 2
- 3
- 4
- 5

score	no of student	Percentage
1-cants say	1	1.4
2 Hardly	2	2.8
3-moderate	6	8.5
4-mostly	33	46.5
5 Definitely	29	40.8
total	71	100%

4. Are you able to solve cellular network design problem ?



- 1
- 2
- 3
- 4
- 5

score	no of student	Percentage
1-cants say	0	0
2 Hardly	5	7
3- moderate	9	12.7
4-mostly	28	39.4
5 Definitely	29	40.8
total		100%



SARASWATI Education Society's
SARASWATI College of Engineering

Learn Live Achieve and Contribute

Kharghar, Navi Mumbai - 410 210.

Department of Information Technology

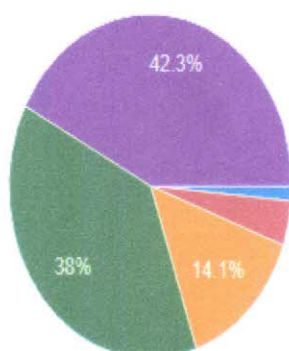
Academic Year: 2020-2021 (EVEN SEM)

Course Exit Analysis Report (Sem VI)

Subject: WN

Subject In-charge: Prof. Vaishali Jadhav.

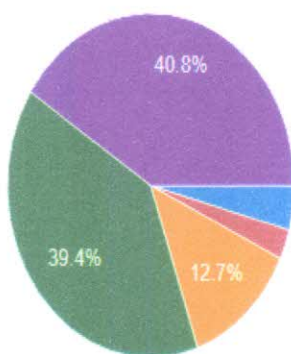
5. Have you able to select most suitable wireless networks as per customer need ?



1
2
3
4
5

1-cants say	1	1.5
2 Hardly	3	3
3- moderate	10	14.1
4-mostly	27	38%
5 Definitely	31	42%
total	71	100

6. Are you interested to Understand and analyze the requirement advanced contents of this subject?



1
2
3
4
5

1-cants say	3	3
2 Hardly	2	2
3- moderate	9	12.7
4-mostly	28	39.4
5 Definitely	30	42.8
total	71	100

Maloo
HOD
Department of
Information Technology

Principal
PRINCIPAL
Principal
Saraswati College of Engineering
Kharghar, Navi Mumbai - 410 210.



Department of Information Technology
Action taken based on feedback from students (CO & PO)
Academic year 2019-20-EVEN

Summary of feedback -Semester 6:

Feedbacks collected through course exit forms were analyzed and necessary actions which are useful for students were planned and conducted. Abstract of suggestions obtained from the stake holders to enhance the employability of the student are discussed below.

- Some more basic concepts should be added in syllabus like programming.
- Need video's for better understanding of concepts in CCS
- Need some extra practice for java programming
- Some extra information of DF for real world problem is needed.

Action Taken:

Based on suggestions, various events are organized, Events are selected such that it will be beneficial for their career. Details of events organized at Institutional and Department level are mentioned below .

Sr No.	Feedback / Suggestions	Action taken	Date
1	Cloud Computing Services	https://www.youtube.com/watch?v=PpX7TuR6DCY	25/7/2020
2	DF -Mobile Forensics	Provided content beyond syllabus for types of Social Engineering	As required
3	DMBI	Frequent pattern mining	As required

Maloo
HOD
HOD
Department of
Information Technology

[Signature]
PRINCIPAL
Principal
Saraswati College of Engineering
Kharghar, Navi Mumbai - 410 210.



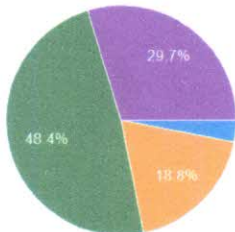
SARASWATI Education Society's
SARASWATI College of Engineering

Learn Live Achieve and Contribute

Kharghar, Navi Mumbai - 410 210.

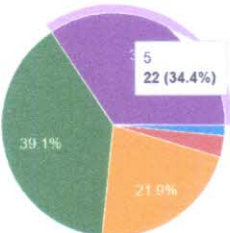
Department of Information Technology
Academic Year: 2020-2021(ODD SEM)
Course Exit Analysis Report (Sem VII)
Subject: STQA
Subject In-charge: Prof.Pragati Pejlekar

1. Investigate the reason for bugs and analyze the principles in software testing and remove bugs
64 responses



Degree of Relevance:	No. Of Students	Percentage
1. Can't Say	0	0%
2. Least Relevant	2	0%
3. Moderately Relevant	13	20%
4. Relevant	32	50%
5. Strongly Relevant	19	30%
Total	64	100%

2. Use practical knowledge of a variety of ways to test software and understand the trade offs between testing techniques
64 responses



Degree of Relevance:	No. Of Students	Percentage
1. Can't Say	0	0%
2. Least Relevant	4	6%
3. Moderately Relevant	14	22%
4. Relevant	22	34%
5. Strongly Relevant	25	39%
Total	64	100%



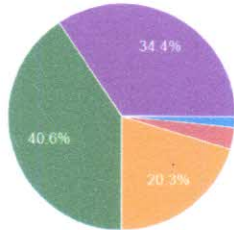
SARASWATI Education Society's
SARASWATI College of Engineering

Learn Live Achieve and Contribute

Kharghar, Navi Mumbai - 410 210.

3. Understand explore various test process for quality improvement

64 responses

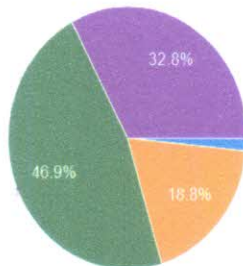


1
2
3
4
5

Degree of Relevance:	No. Of Students	Percentage
1. Can't Say	0	0%
2. Least Relevant	1	2%
3. Moderately Relevant	13	20%
4. Relevant	27	42%
5. Strongly Relevant	23	36%
Total	64	100%

4. Recognize and use software testing techniques in commercial

64 responses



1
2
3
4
5

Degree of Relevance:	No. Of Students	Percentage
1. Can't Say	0	0%
2. Least Relevant	1	0%
3. Moderately Relevant	12	19%
4. Relevant	30	47%
5. Strongly Relevant	21	33%
Total	64	100%



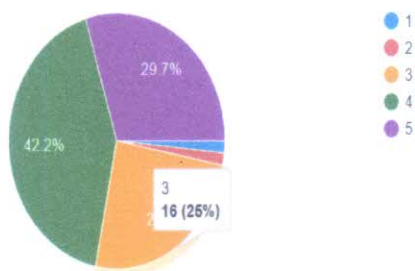
SARASWATI Education Society's
SARASWATI College of Engineering

Learn Live Achieve and Contribute

Kharghar, Navi Mumbai - 410 210.

5. Understand explore and design testing for specialized environment

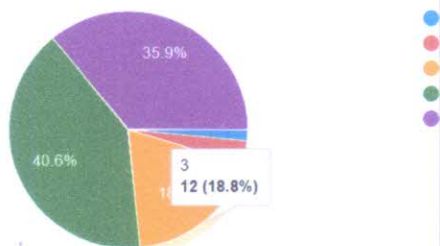
64 responses



Degree of Relevance:	No. Of Students	Percentage
1. Can't Say	1	2%
2. Least Relevant	0	0%
3. Moderately Relevant	17	27%
4. Relevant	27	42%
5. Strongly Relevant	19	30%
Total	64	100%

6. Discuss and categorize software quality management process

64 responses



Degree of Relevance:	No. Of Students	Percentage
1. Can't Say	1	2%
2. Least Relevant	2	3%
3. Moderately Relevant	12	19%
4. Relevant	26	41%
5. Strongly Relevant	23	36%
Total	64	100%

Makoo
HOD

HOD
Department of
Information Technology

[Signature]
PRINCIPAL

Principal
Saraswati College of Engineering
Kharghar, Navi Mumbai - 410 210.



SARASWATI Education Society's
SARASWATI College of Engineering

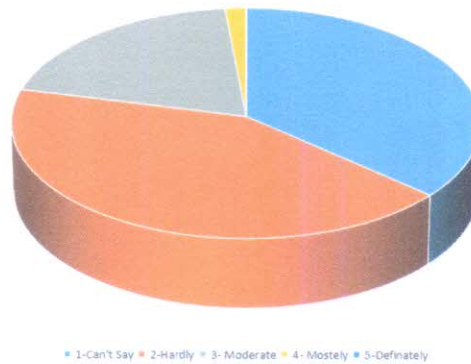
Learn Live Achieve and Contribute

Kharghar, Navi Mumbai - 410 210.

Department of Information Technology
Academic Year: 2020-2021(ODD SEM)
Course Exit Analysis Report (SemVII)
Subject: END
Subject In-charge: Prof.Vaishali Jadhav.

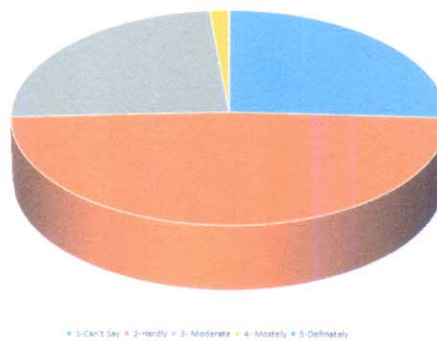
Score	No of students	Percentage
1-Can't Say	24	36.36
2-Hardly	28	42.42
3- Moderate	13	19.70
4- Mostly	1	1.52
5-Definitely	0	0.00
Total	66	100

Q1. Are you able to, Identify customer requirements for designing an enterprise network and Understand methodology to design an Enterprise network.



Score	No of students	Percentage
1-Can't Say	17	25.76
2-Hardly	32	48.48
3- Moderate	16	24.24
4- Mostly	1	1.52
5-Definitely	0	0.00
Total	66	100

Q2. are you able to, Recognize modules (functional areas) of Cisco Enterprise architecture, Understand network services within modular Enterprise network design, and identify network management tool to configure and monitor performance of an Enterprise Network.





SARASWATI Education Society's
SARASWATI College of Engineering

Learn Live Achieve and Contribute

Kharghar, Navi Mumbai - 410 210.

Department of Information Technology
Academic Year: 2020-2021(ODD SEM)
Course Exit Analysis Report (SemVII)
Subject: END
Subject In-charge: Prof.Vaishali Jadhav.

Score	No of students	Percentage
1-Can't Say	20	30.30
2-Hardly	30	45.45
3- Moderate	14	21.21
4- Mostly	2	3.03
5-Definitely	0	0.00
Total	66	100

Q3. are you able to, Select transmission technologies and internet-working devices as per design requirements of Enterprise, Campus module and an Enterprise data center module and Apply the three hierarchical network layers in designing Enterprise, Campus and data center modules

■ 1-Can't Say
 ■ 2-Hardly
 ■ 3- Moderate
 ■ 4- Mostly
 ■ 5-Definitely

Score	No of students	Percentage
1-Can't Say	19	28.79
2-Hardly	33	50.00
3- Moderate	14	21.21
4- Mostly	0	0.00
5-Definitely	0	0.00
Total	66	100.00

Q4. are you able to, Identify WAN transport technologies for designing remote connectivity between enterprise edge and enterprise branch /teleworker modules as per WAN application and technical requirements

■ 1-Can't Say ■ 2-Hardly ■ 3- Moderate ■ 4- Mostly ■ 5-Definitely



SARASWATI Education Society's
SARASWATI College of Engineering

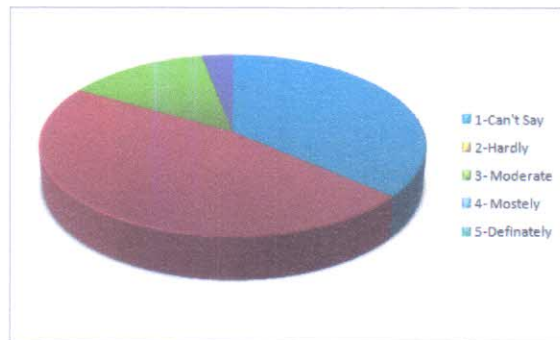
Learn Live Achieve and Contribute

Kharghar, Navi Mumbai - 410 210.

Department of Information Technology
Academic Year: 2020-2021(ODD SEM)
Course Exit Analysis Report (SemVII)
Subject: END
Subject In-charge: Prof.Vaishali Jadhav.

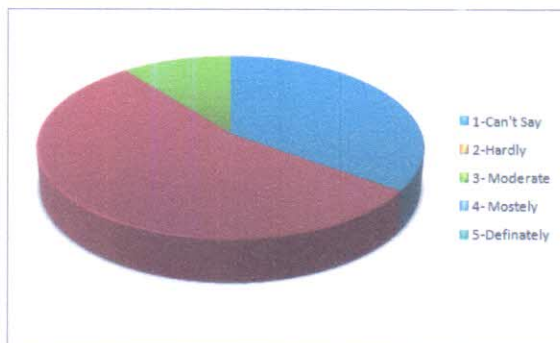
Score	No of students	Percentage
1-Can't Say	24	36.36
2-Hardly	31	46.97
3- Moderate	9	13.64
4- Mostly	2	3.03
5-Definitely	0	0.00
Total	66	100

Q5 are you able to, Designing sub-nets including detailed IP addressing for an enterprise



Score	No of students	Percentage
1-Can't Say	23	34.85
2-Hardly	36	54.55
3- Moderate	7	10.61
4- Mostly	0	0.00
5-Definitely	0	0.00
Total	66	100

Q6 are you able to, Understand software defined network architecture



Maloo
HOD

HOD
Department of
Information Technology

Principal
PRINCIPAL

Principal
Saraswati College of Engineering
Kharghar, Navi Mumbai - 410 210.



SARASWATI Education Society's
SARASWATI College of Engineering

Learn Live Achieve and Contribute

Kharghar, Navi Mumbai - 410 210.

Department of Information Technology

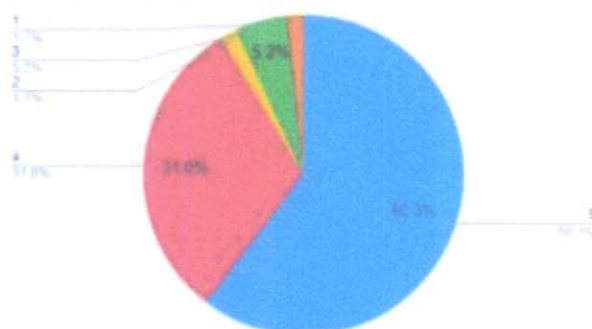
Academic Year: 2020-2021(ODD SEM)

Course Exit Analysis Report (Sem VII)

Subject: CSL

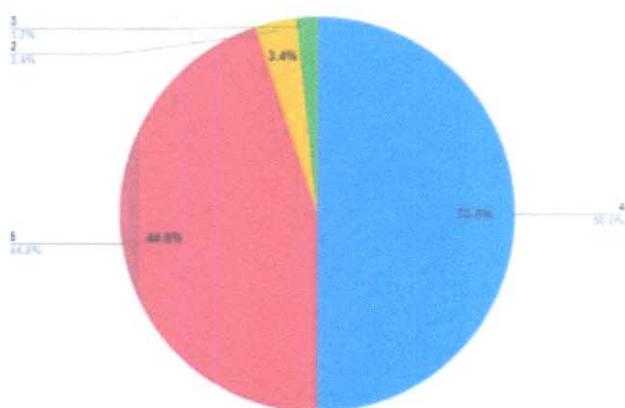
Subject In-charge: Prof.Ragini Sharma.

CO1-Apply theory and principles of computer science and engineering to identify different types of cyber crime and its effect on outside world.



Score	No. of Students	Percentage
1-Can't Say	1	1.7%
2- Definitely	1	1.7%
3-Hardly	3	5.2%
4-Moderately	18	31.0%
5-Mostly	36	60.3%
Total	59	100%

CO2: Apply engineering fundamentals to identify various security challenges in mobile device for different types of attack and Distinguish different aspects of cyber law



Score	No. of Students	Percentage
1-Can't Say	0	0
2- Definitely	2	3.4%
3-Hardly	1	1.7%
4-Moderately	30	50.8%
5-Mostly	26	44.1%
Total	59	100%



SARASWATI Education Society's
SARASWATI College of Engineering

Learn Live Achieve and Contribute

Kharghar, Navi Mumbai - 410 210.

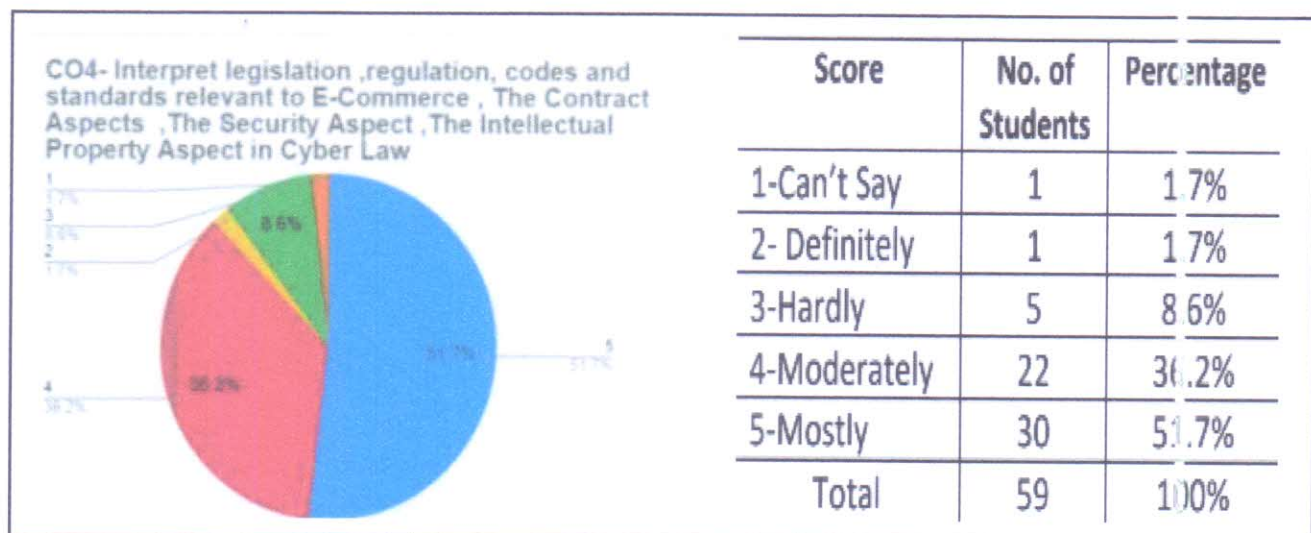
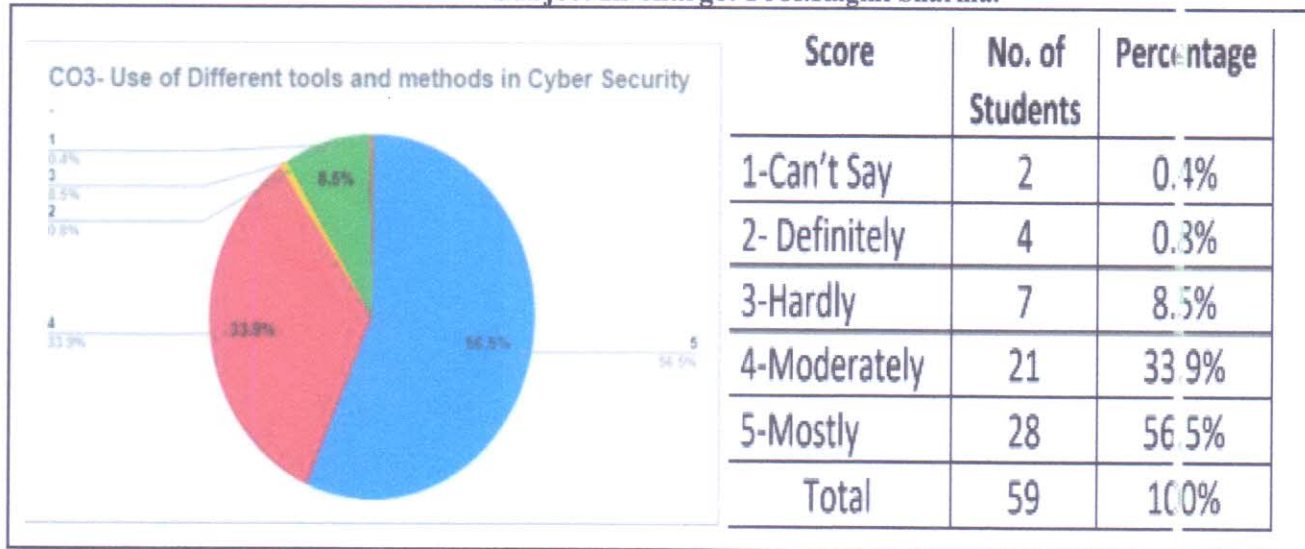
Department of Information Technology

Academic Year: 2020-2021(ODD SEM)

Course Exit Analysis Report (SemVII)

Subject: CSL

Subject In-charge: Prof.Ragini Sharma.





SARASWATI Education Society's
SARASWATI College of Engineering

Learn Live Achieve and Contribute

Kharghar, Navi Mumbai - 410 210.

Department of Information Technology

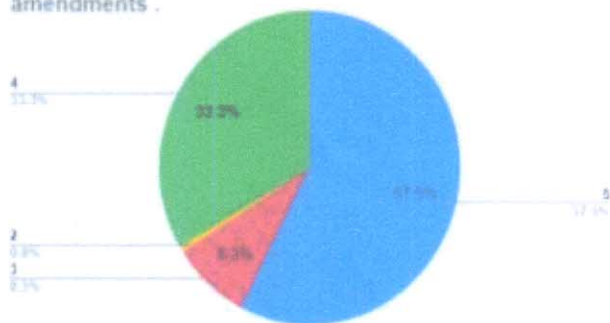
Academic Year: 2020-2021(ODD SEM)

Course Exit Analysis Report (SemVII)

Subject: CSL

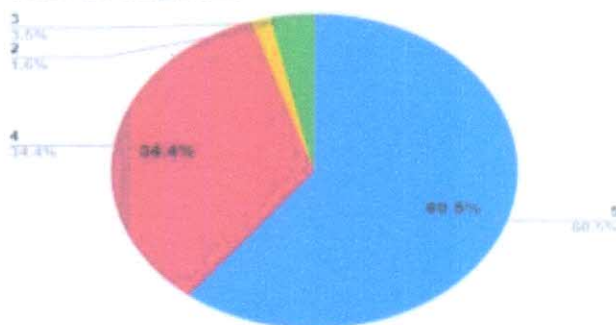
Subject In-charge: Prof.Ragini Sharma.

CO5- Interpret legislation ,regulation, codes and standards relevant to cyber law and explain IT act 2000 and its latest amendments .



Score	No. of Students	Percentage
1-Can't Say	0	0
2- Definitely	2	0.8%
3-Hardly	7	8.3%
4-Moderately	21	33.3%
5-Mostly	29	57.5%
Total	59	100%

CO6- Able to choose appropriate information security standards during software design and development



Score	No. of Students	Percentage
1-Can't Say	0	0
2- Definitely	2	1.6%
3-Hardly	4	3.1%
4-Moderately	22	34.4%
5-Mostly	31	60.5%
Total	59	100%

Maloo
HOD

HOD
Department of
Information Technology

Principal
PRINCIPAL

Principal
Saraswati College of Engineering
Kharghar, Navi Mumbai - 410 210.



SARASWATI Education Society's
SARASWATI College of Engineering

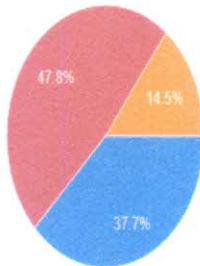
Learn Live Achieve and Contribute

Kharghar, Navi Mumbai - 410 210.

Department of Information Technology
Academic Year: 2020-2021(ODD SEM)
Course Exit Analysis Report (SemVII)
Subject: AI
Subject In-charge: Prof.Pravin Shinde

1. Will you able to design building blocks of agents using PEAS?

69 responses

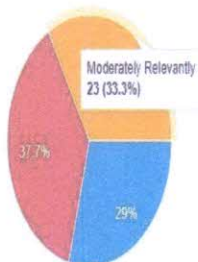


● Strongly Relevantly
 ● Relevantly
 ● Moderately Relevantly
 ● Least Relevantly
 ● Can't say

Score	No of students	Percentage
1- Cant Say	0	0
2- Least Relevantly	0	0
3-Moderately Relavently	10	14.5
4- Relevantly	33	47.8
5- Strong Relevantly	26	37.7
Total	69	100

2. will you able to formulize the problem as state space or graph and design heuristic to solve real world problems

69 responses



● Strongly Relevantly
 ● Relevantly
 ● Moderately Relevantly
 ● Least
 ● can't say

Score	No of students	Percentage
1- Cant Say	0	0
2- Least Relevantly	0	0
3-Moderately Relavently	23	33.3
4- Relevantly	26	37.7
5- Strong Relevantly	20	29
Total	69	100



SARASWATI Education Society's
SARASWATI College of Engineering

Learn Live Achieve and Contribute

Kharghar, Navi Mumbai - 410 210.

Department of Information Technology

Academic Year: 2020-2021(ODD SEM)

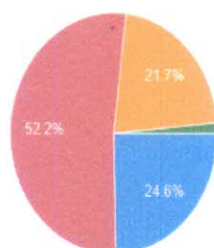
Course Exit Analysis Report (SemVII)

Subject: AI

Subject In-charge: Prof.Pravin Shinde

3. Will you able to attain capability to represent the various real life problem like house building by using logic based techniques and planning

69 responses

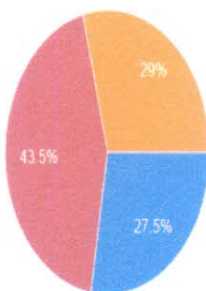


● Strongly Relevantly
 ● Relevantly
 ● Moderately Relevantly
 ● Least Relevantly
 ● Can't say

Score	No of students	Percentage
1- Cant Say	0	0
2- Least Relevantly	1	1.7
3-Moderately Relavently	15	21.7
4- Relevantly	36	52
5- Strong Relevantly	17	24.6
Total	69	100

4. will you able to formulate and solve problems with uncertain information using bayesian approach

69 responses



● Strongly Relevantly
 ● Relevantly
 ● Moderately Relevantly
 ● Least Relevantly
 ● Cant say

Score	No of students	Percentage
1- Cant Say	0	0
2- Least Relevantly	0	0
3-Moderately Relavently	20	29
4- Relevantly	30	43.5
5- Strong Relevantly	19	27.5
Total	69	100



SARASWATI Education Society's
SARASWATI College of Engineering

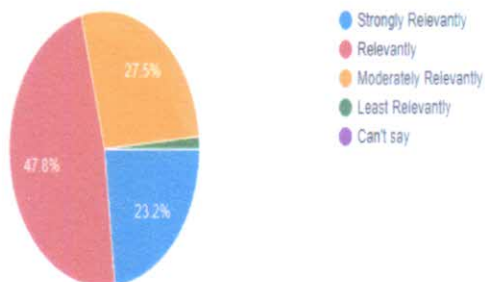
Learn Live Achieve and Contribute

Kharghar, Navi Mumbai - 410 210.

Department of Information Technology
Academic Year: 2020-2021(ODD SEM)
Course Exit Analysis Report (Sem VII)
Subject: AI
Subject In-charge: Prof.Pravin Shinde

5. Will able to design real world problems using STRIPS language like air cargo problem

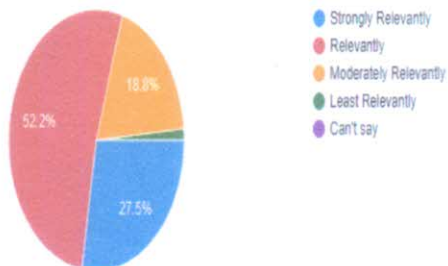
69 responses



Score	No of students	Percentage
1- Cant Say	0	0
2- Least Relevantly	1	1.5
3-Moderately Relavently	19	27.5
4- Relevantly	33	47.8
5- Strong Relevantly	16	23.2
Total	69	100

6. Will you able to apply concept of NLP foe designing Chatbots

69 responses



Score	No of students	Percentage
1- Cant Say		0
2- Least Relevantly	1	1.5
3-Moderately Relavently	13	18.8
4- Relevantly	36	52.2
5- Strong Relevantly	19	27.5
Total	69	100

Mahar
HOD
HOD
Department of
Information Technology

Principal
PRINCIPAL

Principal
Saraswati College of Engineering
Kharghar, Navi Mumbai - 410 210.



SARASWATI Education Society's
SARASWATI College of Engineering

Learn Live Achieve and Contribute

Kharghar, Navi Mumbai - 410 210.

DEPARTMENT OF INFORMATION TECHNOLOGY

Action taken based on feedback from students

Academic Year 2020-21 ODD

Summary of feedback(Semester VII):

Feedbacks collected through course exit were analyzed and necessary actions were planned for effective teaching. Abstract of suggestions obtained from the stakeholders to enhance the employability of the student are discussed below.

- Need animated videos for better understanding
- Exposure to add on courses to boost practical knowledge
- Need awareness about the latest technologies and practices in industry.

Action taken:

Based on suggestions, various events are organized. Events are selected such that it will be beneficial for their career. Details of events organized. Events are selected such that it will be beneficial for their career. Details of events organized at Institutional and department level are mentioned below

S.NO	PROGRAM	COURSE	FEEDBACK RECEIVED	ACTION TAKEN
1	IT	CSL	Data Protection in Cloud	Provided the following you tube link https://youtu.be/xgDc5t-RLMU
2	IT	AI	Bayes' theorem,	Provided the youtube link for for https://youtu.be/oKko3ukFLVc

Maloo

HOD

HOD

Department of
Information Technology

[Signature]

PRINCIPAL

PRINCIPAL

Saraswati College of Engineering
Kharghar, Navi Mumbai-410210



SARASWATI Education Society's
SARASWATI College of Engineering

Learn Live Achieve and Contribute

Kharghar, Navi Mumbai - 410 210.

Department of Information Technology

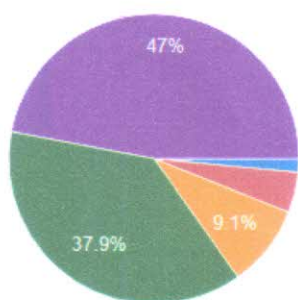
Academic Year: 2020-2021 (EVEN SEM)

Course Exit Analysis Report (Sem VIII)

Subject: IOE

Subject In-charge: Prof.Kirti Mahamunkar.

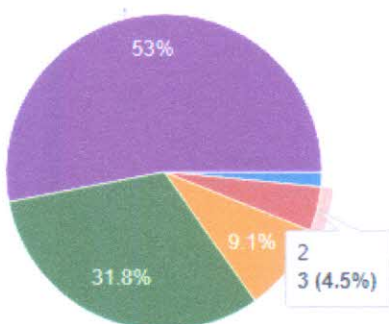
1. Understand the concept of IOE?



1
2
3
4
5

1-cants say	1	1.5%
2 Hardly	2	4.5%
3- moderate	6	9 %
4-mostly	25	37%
5 Definitely	31	47%
total	66	100

2. Understand RFID technology and identify different components of RFID?



1
2
3
4
5

1-cants say	1	1.5%
2 Hardly	3	4.5%
3- moderate	6	9.1%
4-mostly	27	31%
5 Definitely	35	53%
total	66	100%



SARASWATI Education Society's
SARASWATI College of Engineering

Learn Live Achieve and Contribute

Kharghar, Navi Mumbai - 410 210.

Department of Information Technology

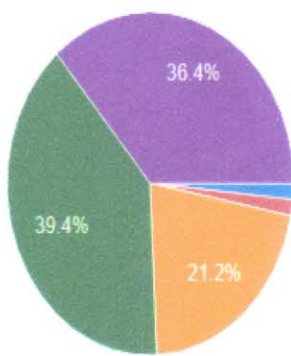
Academic Year: 2020-2021 (EVEN SEM)

Course Exit Analysis Report (Sem VIII)

Subject: IOE

Subject In-charge: Prof.Kirti Mahamunkar.

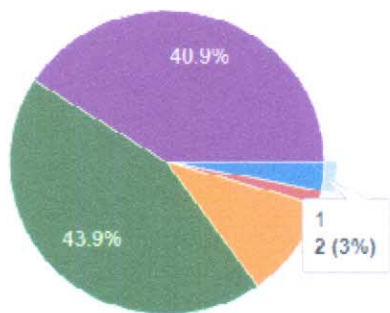
3. Understand the concept of RFID anti-collision protocols for tag identification?



1
2
3
4
5

score	no of student	Percentage
1-cants say	1	1.5%
2 Hardly	1	1.5%
3- moderate	14	21.2%
4-mostly	26	39.4%
5 Definitely	24	36.4%
total	66	100%

4 .explore and analyze the WSN architecture?



1
2
3
4
5

score	no of student	Percentage
1-cants say	2	3%
2 Hardly	1	1.5 %
3- moderate	1	1.5%
4-mostly	24	43.9%
5 Definitely	27	40.9 %
total	66	100%



SARASWATI Education Society's
SARASWATI College of Engineering

Learn Live Achieve and Contribute

Kharghar, Navi Mumbai - 410 210.

Department of Information Technology

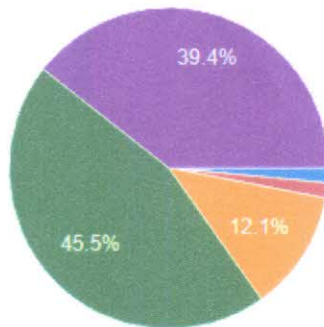
Academic Year: 2020-2021 (EVEN SEM)

Course Exit Analysis Report (Sem VIII)

Subject: IOE

Subject In-charge: Prof. Kirti Mahamunkar.

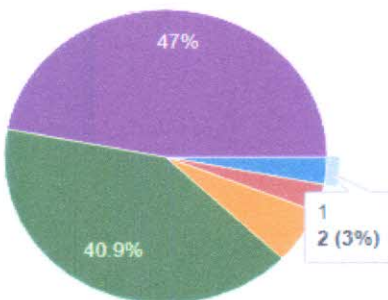
5. Understand and analyze Mobility management



● 1
 ● 2
 ● 3
 ● 4
 ● 5

score	no of student	Percentage
1-cants say	1	1.5 %
2 Hardly	1	1.5 %
3- moderate	8	12.1%
4-mostly	30	45.58%
5 Definitely	26	39.4%
total	66	100%

6. Understand the Hadoop ecosystem and list the components of its?



● 1
 ● 2
 ● 3
 ● 4
 ● 5

score	no of student	Percentage
1-cants say	2	3%
2 Hardly	2	3 %
3- moderate	4	6.1%
4-mostly	27	40.9%
5 Definitely	31	47%
total	66	100%

Mahamunkar
 HOD

HOD
 Department of
 Information Technology

[Signature]
 PRINCIPAL

Principal
 Saraswati College of Engineering
 Kharghar, Navi Mumbai - 410 210.



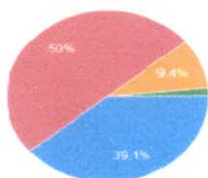
SARASWATI Education Society's
SARASWATI College of Engineering

Learn Live Achieve and Contribute

Kharghar, Navi Mumbai - 410 210.

Department of Information Technology
Academic Year: 2020-2021 (EVEN SEM)
Course Exit Analysis Report (Sem VIII)
Subject: UID
Subject In-charge: Prof. Pravin Shinde.

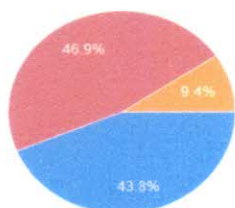
2. will you able to identify human schycology and social emotional aspects for good interaction design
 64 responses



● strongly relevantly
 ● relevantly
 ● moderately relevantly
 ● least relevantly
 ● Can't say

Score	No. of Students	Percentage
1- Cant Say	0	0
2- Least Relevant	1	1.56%
3- Modretly Relevant	6	9.38%
4-Relevant	15	23.44%
5-Strongly Relevant	26	40.63%

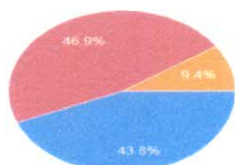
3. will you able to identify appropriate techniques and languages for designing user interaction
 64 responses



● strongly relevantly
 ● relevantly
 ● moderately relevantly
 ● least relevantly
 ● Can't say

Score	No. of Students	Percentage
1- Cant Say	0	0
2- Least Relevant	1	1.56%
3- Modretly Relevant	6	9.38%
4-Relevant	15	23.44%
5-Strongly Relevant	25	39.06%

3. will you able to identify appropriate techniques and languages for designing user interaction
 64 responses



● strongly relevantly
 ● relevantly
 ● moderately relevantly
 ● least relevantly
 ● Can't say

Score	No. of Students	Percentage
1- Cant Say	0	0
2- Least Relevant	1	1.56%
3- Modretly Relevant	6	9.38%
4-Relevant	15	23.44%
5-Strongly Relevant	25	39.06%



SARASWATI Education Society's
SARASWATI College of Engineering

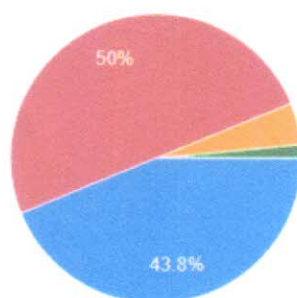
Learn Live Achieve and Contribute

Kharghar, Navi Mumbai - 410 210.

Department of Information Technology
Academic Year: 2020-2021 (EVEN SEM)
Course Exit Analysis Report (Sem VIII)
Subject: UID
Subject In-charge: Prof. Pravin Shinde.

4. will you able to find resources which is used to design user interaction

64 responses

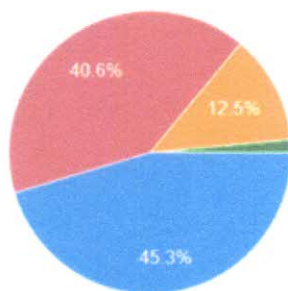


● strongly relevantly
 ● relevantly
 ● moderately relevantly
 ● least relevantly
 ● Can't say

Score	No. of Students	Percentage
1- Cant Say	0	0
2- Least Relevant	0	0.00%
3-Modretly Relevant	6	9.38%
4-Relevant	16	25.00%
5-Strongly Relevant	16	25.00%

5. will you able to convert conceptual design to implementation in interaction design

64 responses



● strongly relevantly
 ● relevantly
 ● moderately relevantly
 ● least relevantly
 ● can't say

Score	No. of Students	Percentage
1- Cant Say	0	0
2- Least Relevant	1	1.56%
3-Modretly Relevant	8	12.50%
4-Relevant	26	40.63%
5-Strongly Relevant	29	45.31%



SARASWATI Education Society's
SARASWATI College of Engineering

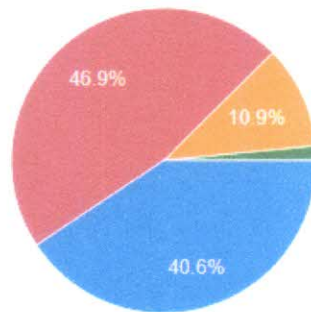
Learn Live Achieve and Contribute

Kharghar, Navi Mumbai - 410 210.

Department of Information Technology
Academic Year: 2020-2021 (EVEN SEM)
Course Exit Analysis Report (Sem VIII)
Subject: UID
Subject In-charge: Prof. Pravin Shinde.

6. will you able to use innovative prototypes for designing applications

64 responses



- strongly relevantly
- relevantly
- moderately relevantly
- least relevantly
- can't say

Score	No. of Students	Percentage
1- Cant Say	0	0
2- Least Relevant	1	1.56%
3-Modretly Relevant	7	10.94%
4-Relevant	12	18.75%
5-Strongly Relevant	26	40.63%

Maleo
HOD

HOD
Department of
Information Technology

Principal
PRINCIPAL

Principal
Saraswati College of Engineering
Kharghar, Navi Mumbai - 410 210.



SARASWATI Education Society's
SARASWATI College of Engineering

Learn Live Achieve and Contribute

Kharghar, Navi Mumbai - 410 210.

Department of Information Technology

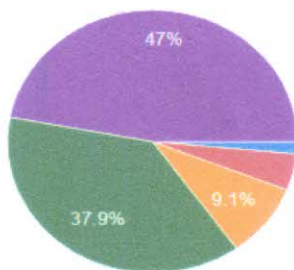
Academic Year: 2020-2021 (EVEN SEM)

Course Exit Analysis Report (Sem VIII)

Subject: BDA

Subject In-charge: Prof. Diksha Kumar.

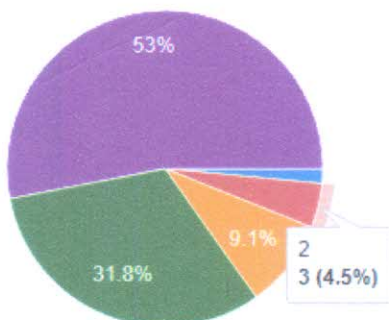
1. Understand the concept of BDA?



1
2
3
4
5

1-cants say	1	1.5%
2 Hardly	2	4.5%
3- moderate	6	9 %
4-mostly	25	37%
5 Definitely	31	47%
total	66	

2. Understand the concept of Hadoop framework and No SQL?



1
2
3
4
5

1-cants say	1	1.5%
2 Hardly	3	4.5%
3- moderate	6	9.1%
4-mostly	27	31%
5 Definitely	35	53%
total	66	100%



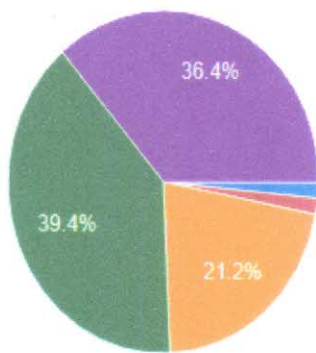
SARASWATI Education Society's
SARASWATI College of Engineering

Learn Live Achieve and Contribute

Kharghar, Navi Mumbai - 410 210.

Department of Information Technology
Academic Year: 2020-2021(EVEN SEM)
Course Exit Analysis Report (Sem VIII)
Subject: BDA
Subject In-charge: Prof. Diksha Kumar.

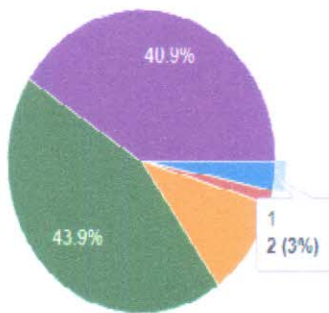
3. Understand the concept of map reduce paradigm using algorithms?



1
2
3
4
5

score	no of student	Percentage
1-cants say	1	1.5%
2 Hardly	1	1.5%
3- moderate	14	21.2%
4-mostly	26	39.4%
5 Definitely	24	36.4%
total	66	100%

4 .Understand the concept of Data streaming Techniques?



1
2
3
4
5

score	no of student	Percentage
1-cants say	2	3%
2 Hardly	1	1.5 %
3- moderate	1	1.5%
4-mostly	24	43.9%
5 Definitely	27	40.9 %
total	66	100%



SARASWATI Education Society's
SARASWATI College of Engineering

Learn Live Achieve and Contribute

Kharghar, Navi Mumbai - 410 210.

Department of Information Technology

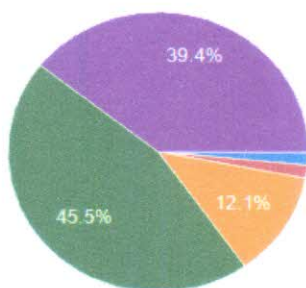
Academic Year: 2020-2021 (EVEN SEM)

Course Exit Analysis Report (Sem VIII)

Subject: BDA

Subject In-charge: Prof. Diksha Kumar.

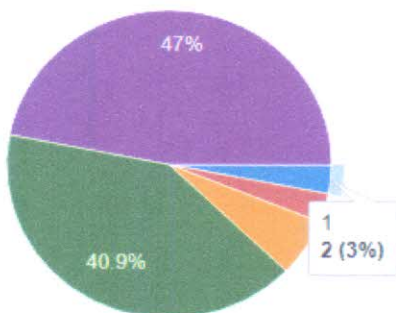
5. Understand and identify the clustering and classification algorithms



● 1
● 2
● 3
● 4
● 5

score	no of student	Percentage
1-cants say	1	1.5 %
2 Hardly	1	1.5 %
3- moderate	8	12.1%
4-mostly	30	45.58%
5 Definitely	26	39.4%
total	66	100%

6. Understand the link analysis, mining social network graphs and recommendation engines?



● 1
● 2
● 3
● 4
● 5

score	no of student	Percentage
1-cants say	2	3%
2 Hardly	2	3 %
3- moderate	4	6.1%
4-mostly	27	40.9%
5 Definitely	31	47%
total	66	100%

Mahesh
HOD

HOD
Department of
Information Technology

[Signature]
PRINCIPAL

Principal
Saraswati College of Engineering
Kharghar, Navi Mumbai - 410 210.



SARASWATI Education Society's
SARASWATI College of Engineering

Learn Live Achieve and Contribute

Kharghar, Navi Mumbai - 410 210.

Department of Information Technology
Action taken based on feedback from students
Academic year 2020-21 -EVEN

Summary of feedback -Semester 8:

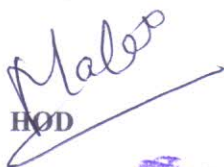
Feedbacks collected through course exit forms were analyzed and necessary actions which are useful for students were planned and conducted. Abstract of suggestions obtained from the stake holders to enhance the employability of the student are discussed below.

- Need more exposure to latest technologies in our field
- Need extra content to understand concepts for IOE
- Need extra content to understand concepts for ERP
- Need extra labs hourse for BE project

Action Taken:

Based on suggestions, various events are organized, Events are selected such that it will be beneficial for their career. Details of events organized at Institutional and Department level are mentioned below .

Sr No.	Feedback / Suggestions	Action taken	Date
1	IOE need extra content to understand concepts of - Module 5 Mobility and Settings	Contents provided localization and handover management- https://slideplayer.com/slide/258507/	As required
2	BDA-Page rank Algorithm with example	https://www.youtube.com/watch?v=xJUwspSaR1E	As required


HOD

HOD
Department of
Information Technology


PRINCIPAL

Principal
Saraswati College of Engineering
Kharghar, Navi Mumbai - 410 210

Department of Information Technology
Academic Year: 2020-2021

Program Exit Analysis Report

Score	No. of students	%
1-can't say	2	4.2
2-least relevant	3	5.6
3- moderately relevant	8	11.3
4- Relevant	24	33.8
5 – strongly Relevant	32	45.1
total	71	100

[PO1: Apply concepts of Mathematics and Computing in solving complex Information Technology Engineering Problems]

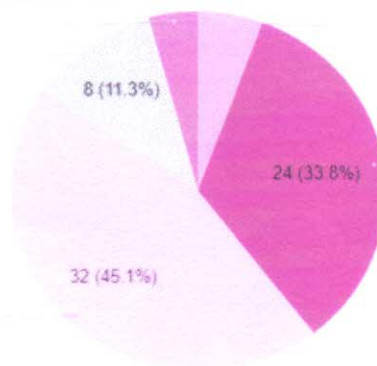
1 (Min)

3 (Scroll Horizontally)

5 (max)

2

4



Score	No. of students	%
1-can't say	2	2.8
2-least relevant	3	4.2
3- moderately relevant	9	12.7
4- Relevant	25	35.2
5 – strongly Relevant	32	45.1
total	71	100

[PO2: Identify and analyse Problems, derive solution using concepts of Information Technology & mathematics]

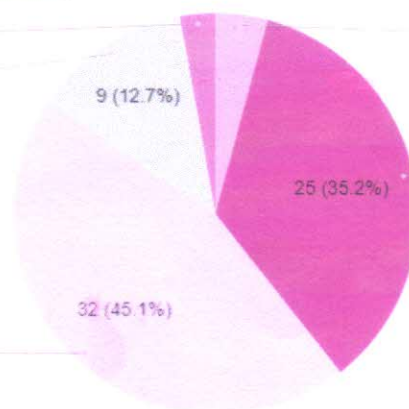
1 (Min)

3 (Scroll Horizontally)

5 (max)

2

4



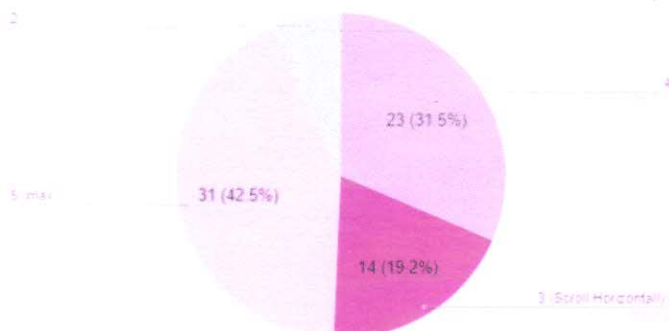


SARASWATI Education Society's SARASWATI College of Engineering

Learn Live Achieve and Contribute
Kharghar, Near Mumbai - 410 210

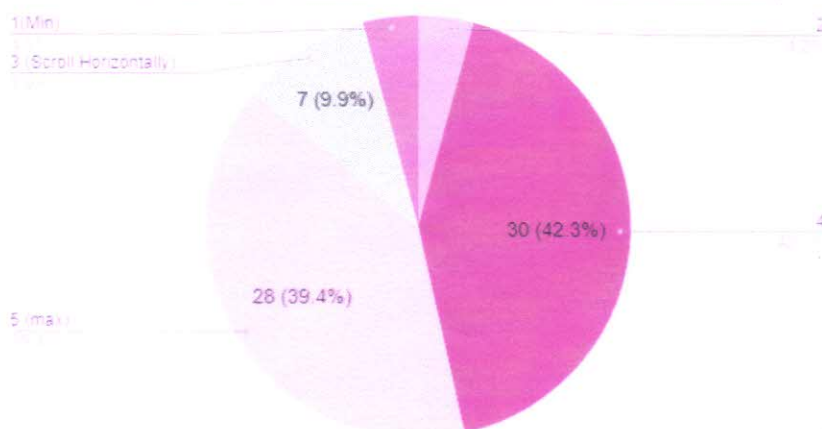
Score	No. of students	%
1-can't say	0	0
2-least relevant	4	6.8
3- moderately relevant	14	19.2
4- Relevant	23	31.4
5 – strongly Relevant	31	42.5
total	71	100

[PO3: Apply appropriate solution to Complex Information Technology Engineering problems leading to valid conclusion]



Score	No. of students	%
1-can't say	3	4.2
2-least relevant	3	4.2
3- moderately relevant	7	9.9
4- Relevant	30	42.3
5 – strongly Relevant	28	39.4
total	71	100

[PO4: Design IT System components, Process to meet specified needs with appropriate attention to health and Safety Standards, Environmental and Societal Considerations]





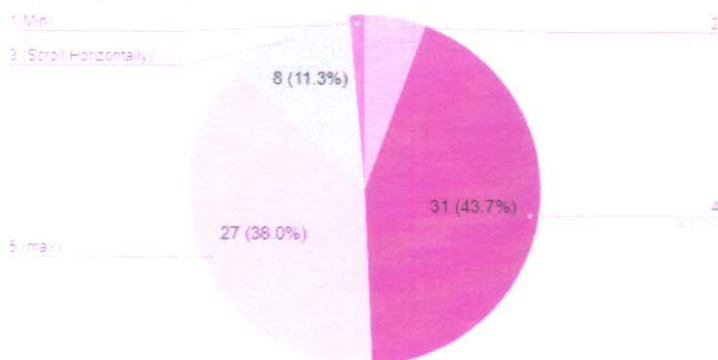
SARASWATI Education Society's SARASWATI College of Engineering

Learn Live Achieve and Contribute

Kharghar, Near Mumbai - 410 210

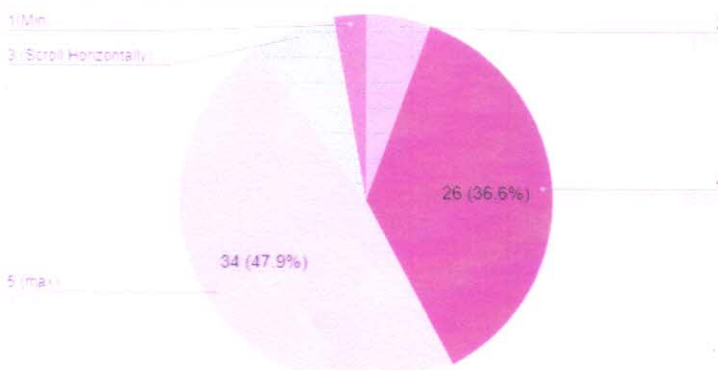
Score	No. of students	%
1-can't say	1	1.4
2-least relevant	3	5.6
3- moderately relevant	8	11.3
4- Relevant	31	43.7
5 – strongly Relevant	27	38.0
total	71	100

[PO1: Create, select and apply appropriate techniques, resources and advanced Engineering Software using modern tools and design for Information Technology Engineering Problems.]



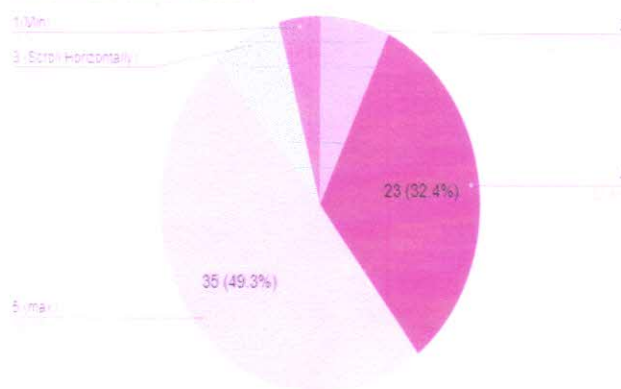
Score	No. of students	%
1-can't say	2	2.8
2-least relevant	3	5.6
3- moderately relevant	4	7
4- Relevant	26	36.6
5 – strongly Relevant	34	47.9
total	71	100

[PO6: Understand the impact of Information Technology solution on society and environment for Sustainable development.]



Score	No. of students	%
1-can't say	2	4.2
2-least relevant	3	7.0
3- moderately relevant	3	7.0
4- Relevant	23	32.4
5 – strongly Relevant	35	49.3
total	71	100

[PO7: Understand Societal Health, Safety, Cultural, Legal Issues and Responsibilities relevant to Engineering Profession.]



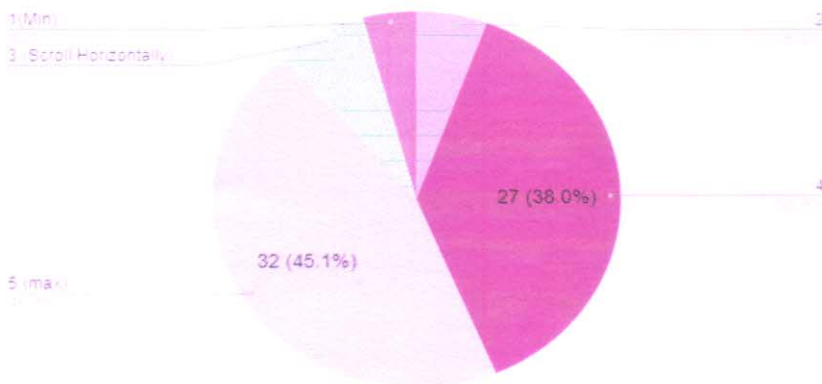


SARASWATI Education Society's SARASWATI College of Engineering

Learn Live Achieve and Contribute
Kharghar, Navi Mumbai - 410 210

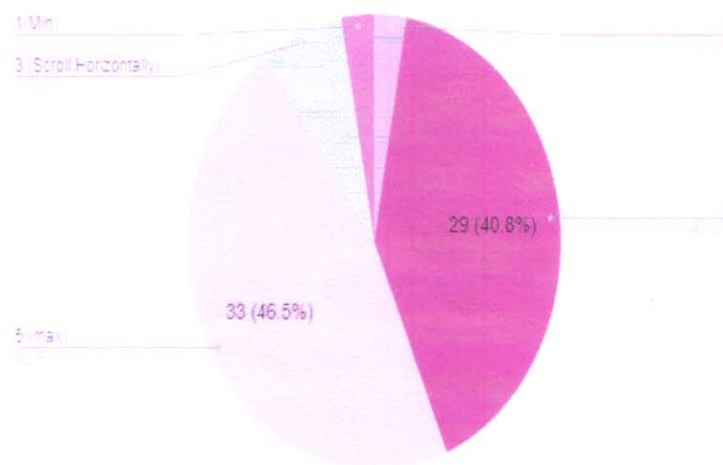
Score	No. of students	%
1-can't say	2	4.2
2-least relevant	3	5.6
3- moderately relevant	4	7.0
4- Relevant	27	38.0
5 – strongly Relevant	32	45.1
total	71	100

[PO8: Apply Professional ethics, accountability and equity in Engineering Profession.]



Score	No. of students	%
1-can't say	2	2.8
2-least relevant	2	2.8
3- moderately relevant	4	7.0
4- Relevant	29	40.8
5 – strongly Relevant	33	46.5
total	71	100

[PO9: Work Effectively as a member and leader in multidisciplinary team for a common goal.]



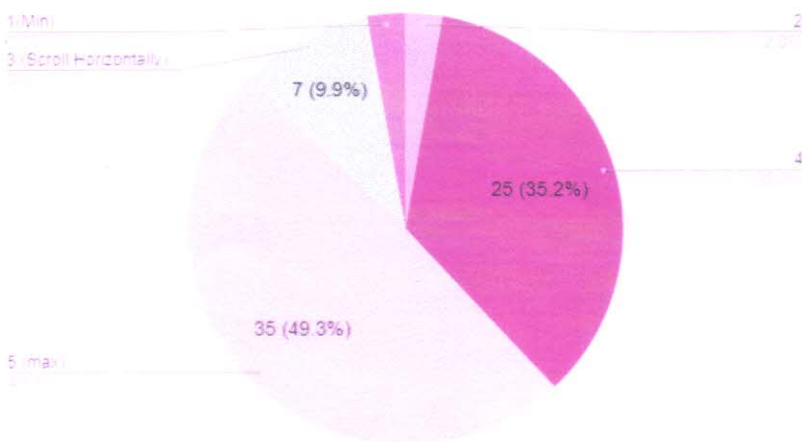


SARASWATI Education Society's SARASWATI College of Engineering

Learn Live Achieve and Contribute
Kharghar, Navi Mumbai - 410 210

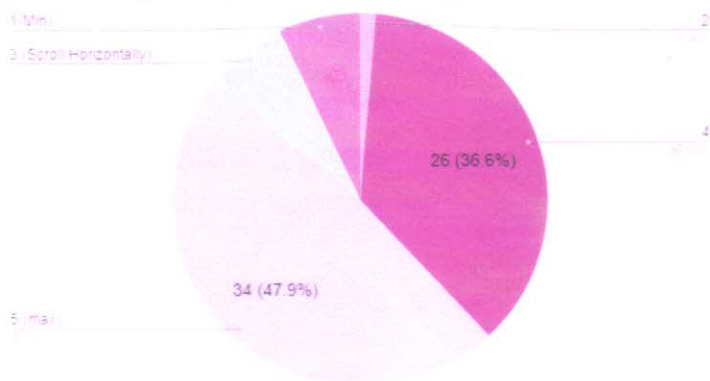
Score	No. of students	%
1-can't say	2	2.8
2-least relevant	2	2.8
3- moderately relevant	7	9.9
4- Relevant	25	35.2
5 – strongly Relevant	35	49.3
total	71	100

[PO10: Communicate Effectively within a Profession and with Society at large]



Score	No. of students	%
1-can't say	5	7.0
2-least relevant	2	2.7
3- moderately relevant	3	7.0
4- Relevant	26	36.6
5 – strongly Relevant	34	47.9
total	71	100

[PO11: Apply principles of Management.]



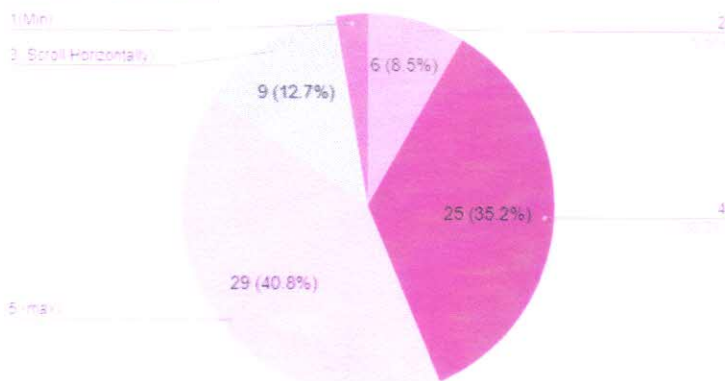


SARASWATI Education Society's SARASWATI College of Engineering

Learn, Live, Achieve and Contribute
Kharghar, Navi Mumbai - 410 210

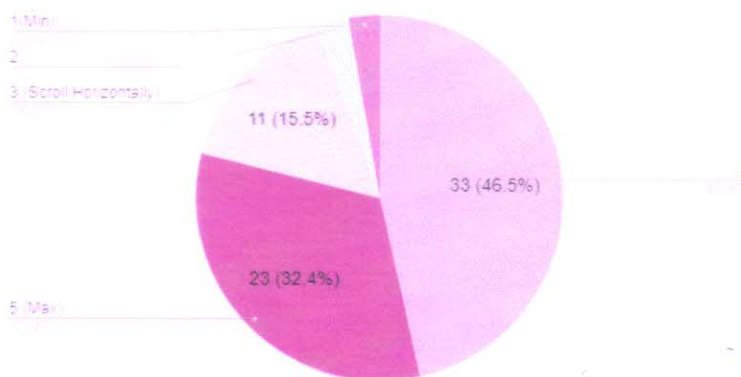
Score	No. of students	%
1-can't say	2	2.8
2-least relevant	6	8.5
3- moderately relevant	9	12.7
4- Relevant	25	35.2
5 – strongly Relevant	29	40.8
total	71	100

[PSQ12: Usefulness of Mathematics Professional Core and electives in competitive exams like GATE higher studies.]



Score	No. of students	%
1-can't say	2	2.8
2-least relevant	2	2.8
3- moderately relevant	11	15.5
4- Relevant	33	46.5
5 – strongly Relevant	23	32.4
total	71	100

[PSQ1: Are you able to Formulate and analyze complex engineering problems in Information Technology engineering (Networking, Big data, Intelligent Systems, Cloud Computing, Real time systems...)]



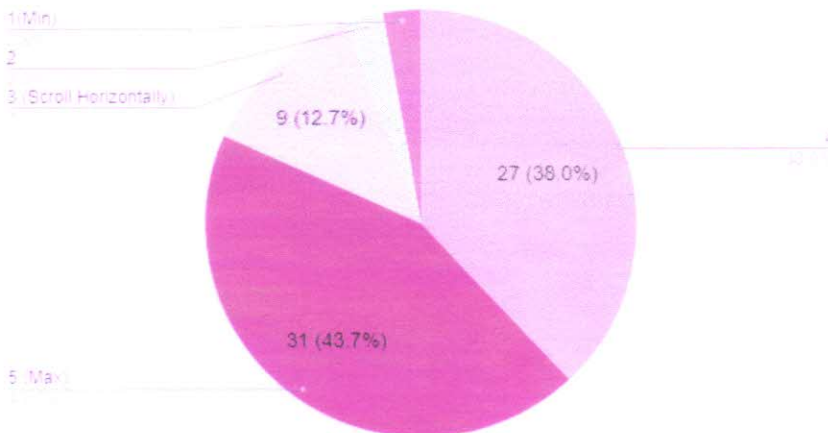


SARASWATI Education Society's
SARASWATI College of Engineering

Learn, Live, Achieve and Contribute
Kharghar, Navi Mumbai - 410 210

Score	No. of students	%
1-can't say	2	2.8
2-least relevant	2	2.8
3- moderately relevant	9	12.7
4- Relevant	27	38.0
5 – strongly Relevant	31	43.7
total	71	100

[PSQ2: Are you able to plan and develop efficient, reliable, secure and customized application software using cost effective emerging software tools ethically]



Mahesh

HoD, IT dept

[Signature]
Principal, scoe

HOD
Department of
Information Technology

PRINCIPAL
Saraswati College of Engineering
Kharghar, Navi Mumbai-410210



Department of Information Technology

Academic Year: 2020-2021

Summary of Feedback received from student through program exit form

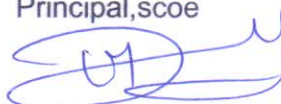
Based on the feedback collected from the students in the program exit form, following observations were found

1. Expert seminar required from the industrial people in that area
2. New technology like Deep Learning, App development using latest frameworks like React Native and Flutter should be included in syllabus.
3. Include industrial visit, workshop, hands-on for most of subject.
4. Opportunities provided for working in multi-disciplinary project teams.


HOD, IT dept

HOD
Department of
Information Technology

Principal, scoe



PRINCIPAL
Saraswati College of Engineering
Kharghar, Navi Mumbai-410210