

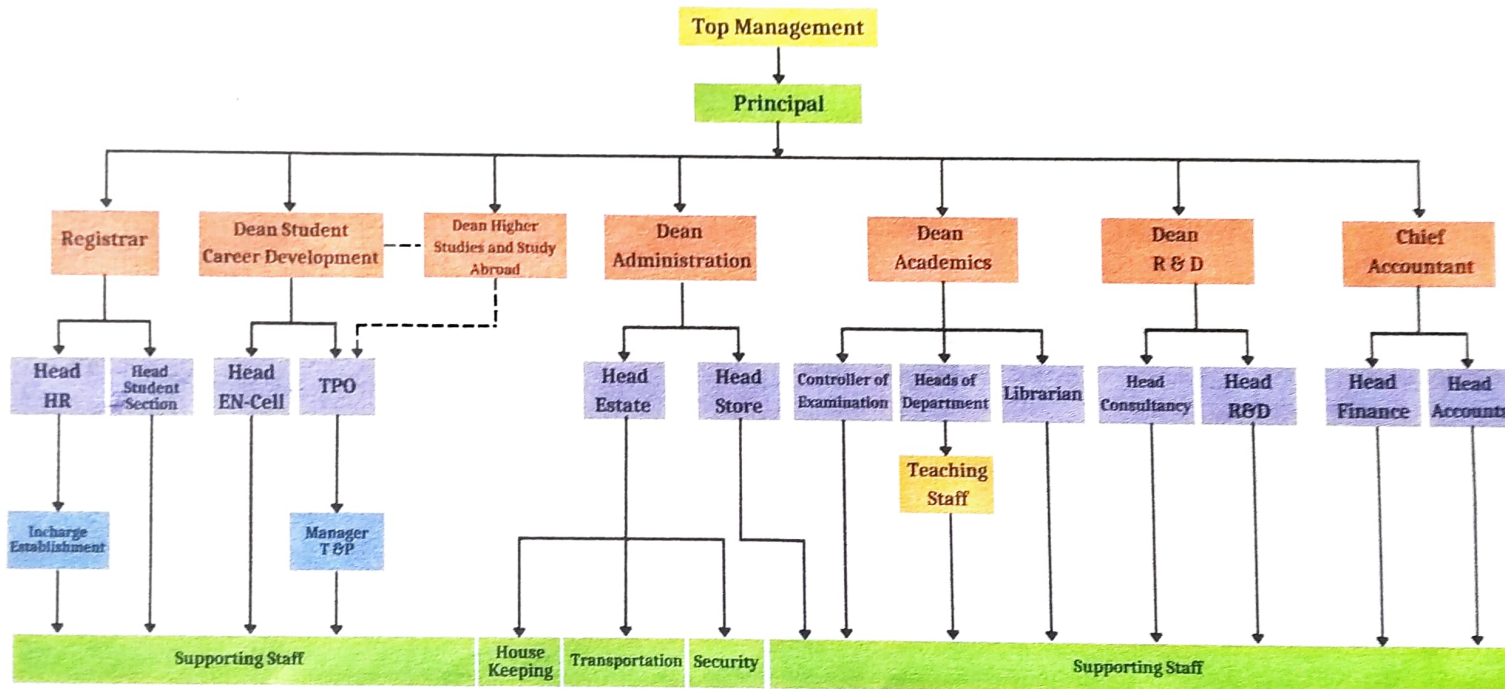


SARASWATI Education Society's  
**SARASWATI** College of Engineering

Learn Live Achieve and Contribute

Kharghar, Navi Mumbai - 410 210.

### ORGANISATION CHART



*[Handwritten Signature]*  
Principal



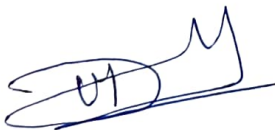
Engineering Programme	Technical Training	Research	Publication	
-----------------------	--------------------	----------	-------------	--

## Quality Policy

We at Saraswati College of Engineering are committed to impart continual quality education leading to degree in Engineering. We would demonstrate continual improvement by complying with requirements, monitoring our abilities and implementation of Quality Management System.

We aim to provide a platform for Research and Development by understanding and meeting industrial needs, by developing technical skills, leadership quality, inter personal skills and upholding the importance of professionalism and ethical practices.

The Quality policy is supported by quality objectives and is communicated through various modes of channels such as notices, websites, brochure and understood within the institution and is reviewed by the management from time to time for continued suitability.



Dr. Manjusha Dehsmukh

Principal

SCOE

PRINCIPAL  
SARASWATI COLLEGE OF ENGINEERING  
Kharghar, Navi Mumbai - 410210



Campus:  
Plot No.- 46, Sector 5, Behind MSEB Sub-Station, Near Utsav Chowk, Kharghar, Navi Mumbai-410210 (Maharashtra, India).  
Tel.: 022-27743706 / 07 / 08 / 09. Fax: 022-27743712. E-mail: registrarsaraswati@gmail.com  
Website: www.sce.edu.in

a (Saraswati Education Society) endeavor  
(Approved by AICTE, Regd. by Maharashtra Govt. DTE, Affiliated to Mumbai University)

An ISO 9001-2008 Certified Institute



## Quality Objectives

- To become a capable Educational & Research organization.
- To make the students of Saraswati College of Engineering globally competent with leadership qualities.
- To endeavor hard for the holistic development of students, through co-curricular, extracurricular activities, training and industrial exposure for the evolving industry needs.
- To offer better career openings by improving employability and interpersonal skills of students.
- To impart quality education to the students and to become centre of excellence.
- To offer wide platform to students and faculty for research through collaborative activities like MOU's with well-known national and international organizations.

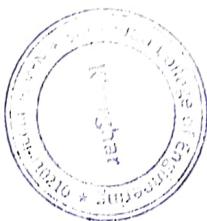
Dr. Manjusha Deshmukh

Principal

SCOE

PRINCIPAL

Saraswati College of Engineering  
Kharghar, Navi Mumbai - 410 210



Date: 01/01/2020

Revised Vision and Mission of Saraswati College of Engineering w.e.f.  
01/01/2020

## VISION

To be universally accepted as autonomous center  
of learning in engineering education and research.

## MISSION

- To educate students to become responsible & quality technocrats to fulfill society and industry needs.
- To nurture student's creativity and skills for taking up challenges in all facets of life.

Dr. Manjusha Deshmukh

Principal  
PRINCIPAL

Mrs. Vrushali Deshmukh  
Secretary

Campus:

Plot No.- 46, Sector 5, Behind Mumbai Sub-Station, Near Utsav Chowk, Kharghar, Navi Mumbai-410210

(Maharashtra, India).

Mob.: 9320299474 / 75. E-mail: registrarsaraswati@gmail.com

Website: www.sce.edu.in

a (Saraswati Education Society) endeavor  
(Approved by AICTE, Recg. by Maharashtra Govt. DTE, Affiliated to Mumbai University)

An ISO 9001-2008 Certified Institute