



SARASWATI Education Society's
SARASWATI College of Engineering
[Learn Live Achieve and Contribute]
Kharghar, Navi Mumbai - 410 210

'NURTURE' – Skill development program'

2017-18

Communication, Personality development, soft skill learning AND Corporate readiness

(An initiative of The Saraswati Education Society)

Lecture & Workshop Report- FE- All divisions

Foreword:

'Nurture – Skill development program' covering the Communication, Personality development, Soft skill learning & corporate readiness' series was positively received.

The modules covered a lot of student interaction, team activities, and professional communication aspects for personality development as well as inculcating basics for the preparation for placements and improving further prospects for employability of students.

Preamble:

- 'Nurture' program is an in-house initiative focused towards holistic development of students training & nurturing them through various capacities, via Soft skill learning
- Focus is on the Personality development & corporate readiness of students, and the training provided, helps them in self-analysis, understand areas of improvement and groom them to be professionally presentable.
- Students are guided towards enhancing their employability, increasing their chance of better placement, with training in soft skills, bridging the gap between the employer and the employee.
- It is dedicated towards providing focused assessing, counseling, mentoring to groom the 'Better to be the Best' and the 'Best to be Outstanding', right from the First Year.

Modules & curriculum: (as per the schedule & Time table)

- Introduction on 'Add- on course'- 'Nurture'
- Need & Benefits of the course
- Placement Process- Awareness
- Personality & body language
- Gap analysis - Verbal Communication- English
- Role play and Communication activity- Group
- Verbal communication activity- Individual
- Grammar- English (Prepositions)
- 'Nurture' program – Test (Group task)
- Assessment, counseling & Feedback



Handwritten signature

PRINCIPAL
Saraswati College of Engineering
Kharghar, Navi Mumbai-410210



SARASWATI Education Society's
SARASWATI College of Engineering

[Learn Live Achieve and Contribute]
Kharghar, Navi Mumbai - 410 210.

Mode of achievement and Methodology

- All Divisions of First year covered Individually
- Nurture Add-on modules teaching
- Soft skill concepts, Communication skill
- Individual & group activities
- Demo activity
- Work-shops & Seminars
- Role play activities
- Written documentation- work sheets, exercises
- Counseling and Feedback

'Nurture' Add-on Program Outcome (PO):

On successful completion of the learning, student will be able to-

- Gradually transform from being a student to becoming a professional.
- Focus on the personal & professional effectiveness, through good spoken language & etiquettes.
- Adjust smoothly with confidence, whether coming from vernacular or any other medium.
- Develop individual ability and strengthen employability quotient.
- Face challenges in today's dynamic and diverse Indian and Global culture.
- Build positive attitude and become ready for future tasks and responsibilities.

Syllabus & Modules covered: Days- 04; Time duration: 02 hours daily

Day-1/ Module	Day-2/Module	Day-3/ Module	Day-4/Module
Introduction- Skill Development Need & Benefits	Verbal communication	Presentation skill- Techniques & tips	Skill application class test
Personality development & understanding	Grammar & Communication activity	Group presentation & task	Group activity
Body language, Grooming & corporate etiquettes	Group Task & Assessment	Current affairs, GK & social issues	Class discussion and Q & A on a topic
Class task	Feedback & Counseling	Class discussion	Counseling & Feed - back



PRINCIPAL
Saraswati College of Engineering
Kharghar, Navi Mumbai-410210



SARASWATI Education Society's
SARASWATI College of Engineering

[Learn, Live, Achieve and Contribute]
Kharghar, Navi Mumbai - 410 210.

Workshop Program Components: Process in detail

- Awareness on the role of Skill development with examples
- Detail on Personality, Impact, types, and tips to develop personality
- Career building
- Communication skill concepts, techniques & practical to help them improve their speaking abilities
- General knowledge, current affairs, social & group interaction
- Self- Analysis- understanding of strengths & weaknesses and their application
- Learning Presentation making and techniques developing skill
- Counseling & personal feedback at each step for better understanding & improvement


Methodology:

- Theory notes, examples, comparative analysis with respect to competition, Mock and practical activity.
- 'Nurture'- Skill development program files maintained by all the students, with all the concept details, Group task & Application activities
- Concept Application activity & Demo
- Individual & Group Mock
- Counseling, feedback & response to the students'
- All the modules covered included maximum student interaction & participation along with discussion, Q & A on various topics during the sessions.
- The students were asked to practically enact the activities in the form of practical activity, after initial teaching with the detail on Elimination /selection rounds by corporate during placements, the key requirements & aspects for selection, participation techniques, do & don'ts, tips etc.



Attendance Break-up- First Year

Division	Branch	Total Students	Average attendance (%)
A	Civil	70	68.43
B	Civil	71	70.7
C	Mech	72	74
D	Mech	71	62.3
E	Computer	59	73.3
F	IT	47	46.27
G	Extc	64	44.53


PRINCIPAL
Saraswati College of Engineering
Kharghar, Navi Mumbai-410210



SARASWATI Education Society's
SARASWATI College of Engineering

Learn Live Achieve and Contribute
Kharghar, Navi Mumbai - 410 210.

Activity, Task & Assignment given:

1. Understanding personality
2. Areas of personality-improvement identified in the student
3. Individual communication & self-analysis activity
4. Role play activity (group) on topics given
5. Current affairs & latest national/ International events
6. Presentation- Different groups
7. Question & Answer on Grammar, self-analysis

Impact of the program - Detail of Assessment conducted & Objective

1. File documentation - All students

- Students asked to make Files/folders to note the details for future reference
- Importance stressed upon regarding each topic of the workshop.
- Students identified and noted their weak areas and took to understanding their strengths and factors which will help in personality development etc.
- Assessment of each students' communication, body language, attitude via various Application activities with feedback


2. Personality -Grooming, Body language, Non-verbal communication, Self-analysis- All students

- Various aspects of personality explained
- Students made to understand personality in simple ways; with proper terminology
- They were given the task to identify the areas in their personality which required improvement
- Tips given to incorporate in daily life for better development of personality
- Importance of professional non-verbal & verbal communication in professional life

3. Role play- Participating Groups & interaction with class

- Detail given to the students for the preparation for future placements.
- Importance of the task and topic explained, as a major stage for the selection/elimination of students in a competitive set-up along with the students of other colleges.
- Information on complete procedure, rules & regulations given
- Students divided into groups for participation
- Students were encouraged to give their views and class discussion arranged between participants and other students




PRINCIPAL
Saraswati College of Engineering
Kharghar, Navi Mumbai-410210



SARASWATI Education Society's
SARASWATI College of Engineering

Learn Live Achieve and Contribute
Kharghar, Navi Mumbai - 410 210.

- **Presentation Test** – Taken based on Verbal & Nonverbal communication, Attitude, Content & confidence

Demo Topics: Role Play

- Travel Agency
- Company employee and group
- News hour
- Public place – Professional communication

4. Individual Activity (complete class) Self- Analysis - Individual

Student Participation: Students were explained about the basics of understanding own strength & weaknesses.

- They were encouraged to list them out & speak about them in the class.
- This was followed with class discussion, queries and examples.
- Counseling was given as & where required.
- Students were interactive and discussed the activities as per the guidance given.
- Students were made to understand the various aspects of personality and skills
- Analyze their personality and apply the skills accordingly

5. Group Activity (Groups):

Division A- Civil

Student participation- (Group sample)

Assessment & feedback shared with the students

Group	Student name	Role Play	Presentation
1 & 2	Swarali, Tanishqa, Ajay, Aditya, Mangesh, Abhishek, Akshay, Shubham, Ashish, Ankit, Purve	Situation handling – Staff Company employee	Transgender – Social mindset
3 & 4	Nilesh, Abhijet, Saurabh, Yash K, Kaustaubh, Rohan	Travel Agency	Make in India;
5 & 6	Tejashree, Sayayali, Shweta, Rutuja, Bhagyashree, Sonal, Deepali, Dnyanesh, Dhananjay, Mansi, Prerna, Ruhita	Travel Agency	Opposition on movies' release
7 & 8	Devashree, Sagar, Akshata, Sejal, Stephan, Akshay, Rutuja, Dhanashree, Atharv, Shubham S, Akash M.	Fast Food	Bhima Koregaon incident




PRINCIPAL
Saraswati College of Engineering
Kharghar, Navi Mumbai-410210



SARASWATI Education Society's
SARASWATI College of Engineering

Learn Live Achieve and Contribute
Kharghar, Navi Mumbai - 410 210.

Division B-Civil

Group	Student name	Role Play	Presentation
1 & 2	Tushar, Varun, Prathamesh, Yash, Shubham, Rohan, Vinay, Vinayak, Pravin, Abhishek, Tejas, Omkar	Situation handling – Staff Company employee	- Should Politics interfere with religion - China a potential threat to India
3 & 4	Rohit, Vikas, Vedant, Udhhav, Dheeraj, Shubham, Ninad, Shreyas, Aditya, Dhanraj, Siddhesh	T.V discussion	-Communal hatred brings downfall of a country - Are men better cooks than women
5 & 6	Prathamesh, Aadesh, Mihir, Aniket, Mohit, Kamlesh, Amit, Hitesh, Punit, Amar, Akash, Jayesh, Harshal, Akshay, Gaurav	Travel Agency	-Can India emerge as a super power in sports - Are women safe in India?
7 & 8	Aniket, Vinay, Prajwal, Rohit, Chetan, Makarand, Barnali, Sumit, Shashi, Muskan, Pratibha, Atul, Rahul, Nachiket, Minal	T.V. Discussion	- Are women safe in India? Arab countries v/s U.S.A

Division C- Mechanical

Group	Student name	Role Play	Presentation
1 & 2	Tushar, Varun, Prathamesh, Yash, Shubham, Rohan, Vinay, Vinayak, Pravin, Abhishek, Tejas, Omkar	Situation handling – Staff Company employee	- Should Politics interfere with religion - China a potential threat to India
3 & 4	Rohit, Vikas, Vedant, Udhhav, Dheeraj, Shubham, Ninad, Shreyas, Aditya, Dhanraj, Siddhesh	T.V discussion	-Communal hatred brings downfall of a country - Are men better cooks than women
5 & 6	Prathamesh, Aadesh, Mihir, Aniket, Mohit, Kamlesh, Amit, Hitesh, Punit, Amar, Akash, Jayesh, Harshal, Akshay, Gaurav	Travel Agency	-Can India emerge as a super power in sports - Are women safe in India?
7 & 8	Aniket, Vinay, Prajwal, Rohit, Chetan, Makarand, Barnali, Sumit, Shashi, Muskan, Pratibha, Atul, Rahul, Nachiket, Minal	T.V. Discussion	- Are women safe in India? Arab countries v/s U.S.A



09
- PRINCIPAL
Saraswati College of Engineering
Kharghar, Navi Mumbai-410210.



SARASWATI Education Society's
SARASWATI College of Engineering

Learn Live Achieve and Contribute

Kharghar, Navi Mumbai - 410 210.

Division E- Computer

Group	Student name	Role Play (situation)	Presentation
1 & 2	Pratik, Nishad, Aniket, Akshay, Dhruv, Vineet, Dhananjay, Sameer	T.V Discussion	- Should Politics interfere with religion
3 & 4	Rohit, Vikas, Vedant, Udhhav, Dheeraj, Shubham, Ninad, Shreyas, Aditya, Dhanraj, Siddhesh, Swapnil, Prashant, Siddesh, Nikhil, Suraj, Rishikesh	T.V discussion	-Communal hatred brings downfall of a country - Are men better cooks than women
5 & 6	Vrutik, Adarsh, Rohan N, Rohan S, Ujwal, Chetan, Prithiviraj, Sandeep, Sushant, Sarvesh, Akaaash, Shubham	Food Restaurant	-Can India emerge as a super power in sports - Are women safe in India?
7 & 8	Aniket, Vinay, Prajwal, Rohit, Chetan, Makarand, Barnali, Sumit, Shashi, Muskan, Pratibha, Atul, Rahul, Nachiket, Minal	T.V. Discussion	- Are women safe in India? Arab countries v/s U.S.A



PRINCIPAL
Saraswati College of Engineering
Kharghar, Navi Mumbai-410210.



SARASWATI Education Society's
SARASWATI College of Engineering

Learn Live Achieve and Contribute!
Kharghar, Navi Mumbai - 410 210.

Students Activities & Tasks – Various moments- FE



PRINCIPAL
Saraswati College of Engineering
Kharghar, Navi Mumbai-410210.



SARASWATI Education Society's
SARASWATI College of Engineering

Learn Live Achieve and Contribute |
Kharghar, Navi Mumbai - 410 210.

Class Group. Successful completion of the Skill Development program



Division A- Civil



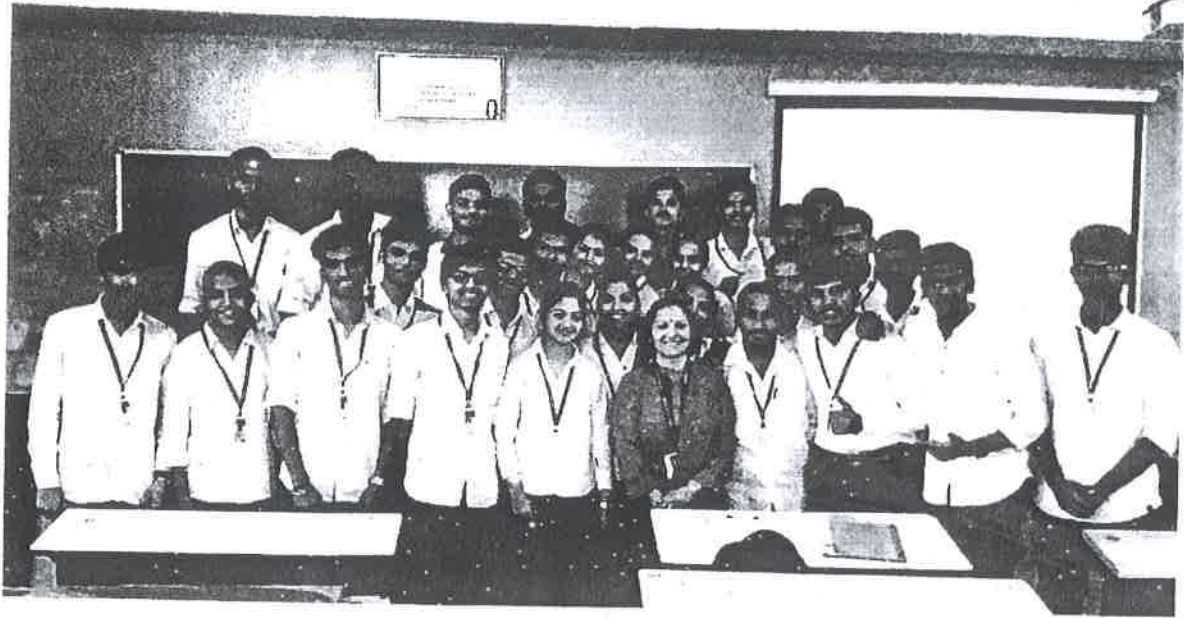
PRINCIPAL
Saraswati College of Engineering
Kharghar, Navi Mumbai-410210



SARASWATI Education Society's
SARASWATI College of Engineering

Learn Live Achieve and Contribute
Kharghar, Navi Mumbai - 410 210.

Division B- Civil



Division E- Computer



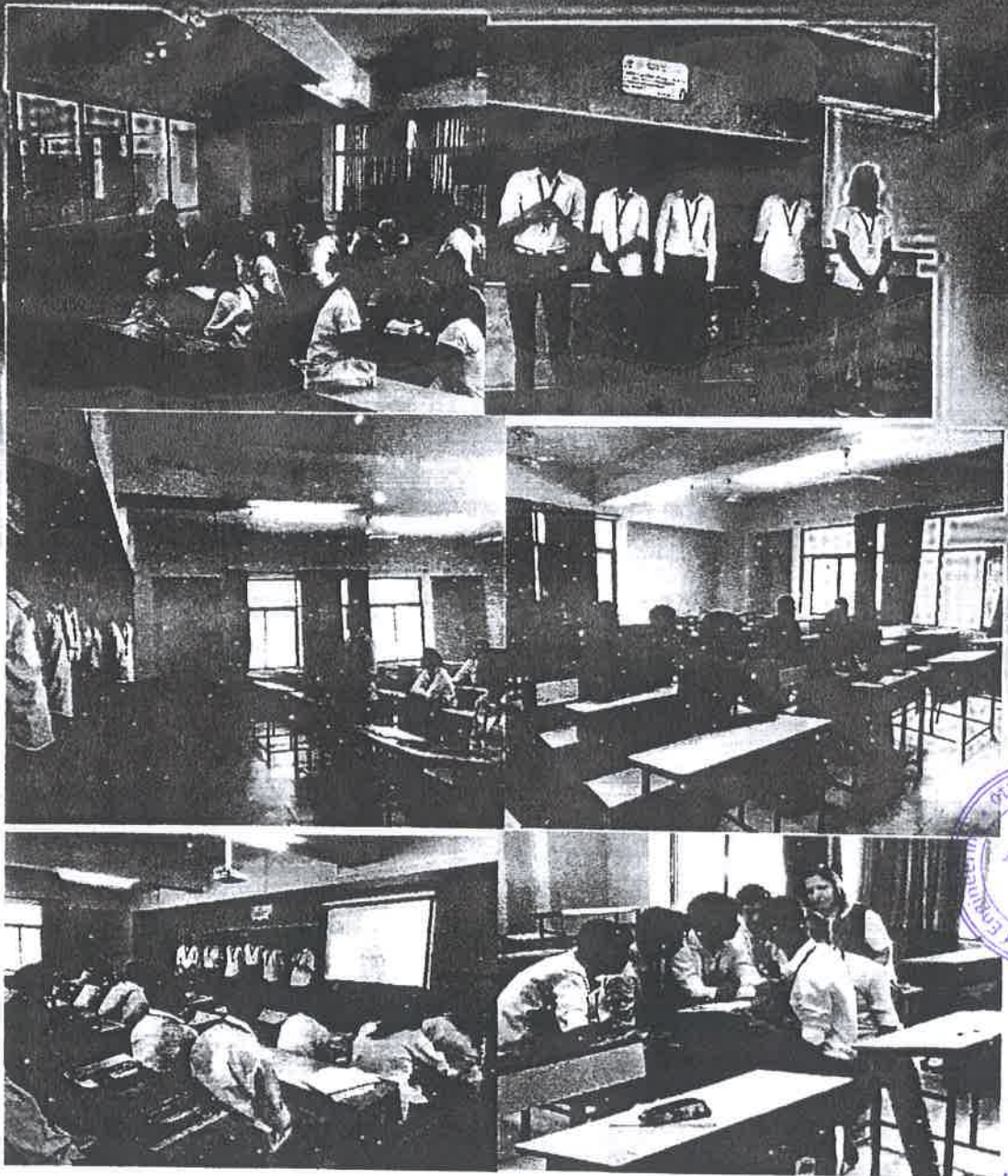
Division F- Information Technology



PRINCIPAL
Saraswati College of Engineering
Kharghar, Navi Mumbai-410210.

Department of Education Society
SARASWATI College of Engineering
Kharghar, Navi Mumbai-410210

Group task and Presentations- Some Moments - FE Dept.



[Handwritten Signature]

PRINCIPAL
Sarawati College of Engineering
Kharghar, Navi Mumbai-410210

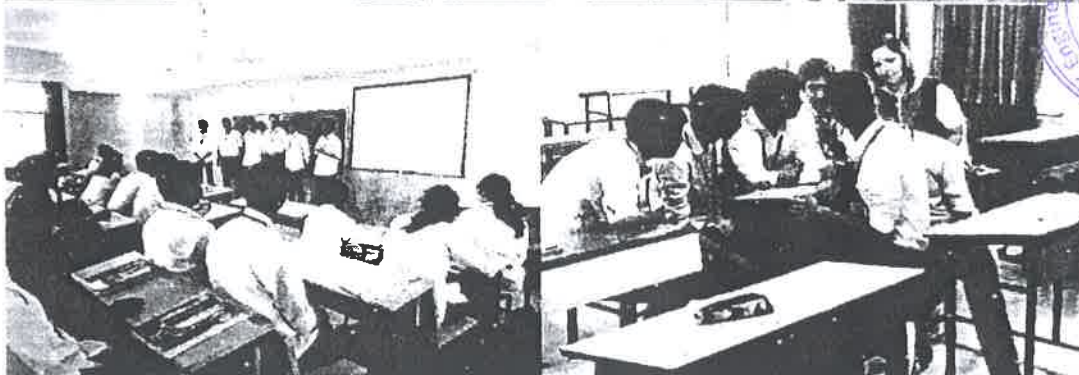
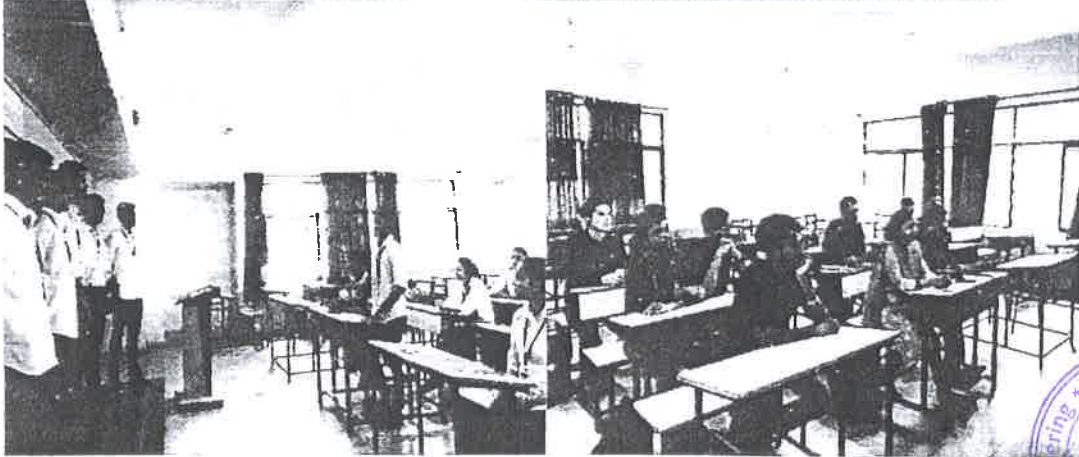


SARASWATI Education Society's
SARASWATI College of Engineering

Learn Live Achieve and Contribute

Kharghar, Navi Mumbai - 410 210.

Group task and Presentations- Some Moments - FE dept.



PRINCIPAL
Saraswati College of Engineering
Kharghar, Navi Mumbai-410210.



SARASWATI Education Society's
SARASWATI College of Engineering

[Learn, Live, Achieve and Contribute]
Kharghar, Navi Mumbai - 410 210.

Recommendations:

All details were shared and discussed with HOD madam, the class advisor and students, as & when required. However, as per the views shared:

- Modules may prove to be additionally beneficial if students are regular and the seriousness towards the cause is maintained. This would help in increased participation following a proper sequence
- As an option, a final sorted & selected list can be prepared for the students showing larger interest. This may avoid unnecessary peer pressures & disturbance to the ones interested, ensuring complete participation.
- It has been an enriching experience to train the young students.
- All the students, who attended the sessions, were enthusiastic and keen to improve and many of them have shown potential to go ahead successfully.

The 'NURTURE' Skill development program is a new step taken in the interest of our students.

Any new effort targeted towards learning and improvement of students takes an institute to the next level along with a scope for improvement. Hence, valuable views are most welcome.

With Regards,

Prof Alka Purohit

AP-CS

Program Coordinator – 'NURTURE' Skill Development

Dr. Manjusha Deshmukh

Principal- SCOE



Enclosures:

- Attendance sheet
- Time table
- Sample 'Student – Nurture File'
(Containing all concepts & tasks, test given)
- Sample-Activity sheets
- Soft copy of Nurture workshop pictures
- Student Feedback

All content above discussed with & handed over to the FE department.

PRINCIPAL
Saraswati College of Engineering
Kharghar, Navi Mumbai-410210



SARASWATI EDUCATION SOCIETY'S
SARASWATI COLLEGE OF ENGINEERING
KHARGHAR, NAVI MUMBAI - 410210
ACADEMIC YEAR 2015 - 2016


DEPARTMENT OF FIRST YEAR ENGINEERING DEPARTMENT

SEM - II 2017-2018

NURTURE'- SKILL DEVELOPMENT PROGRAM FEEDBACK

Sr.No.	DIV	No. of Students	Score (Out of 05)
1	A	26	4.64
2	B	23	4.79
3	C	18	4.78
4	D	20	4.61
5	E	29	4.72
Overall all Feedback			4.71

- Overall experience: 1) Confidence building
2) Better communication
3) Vocabulary building
4) Team work learning
5) Removed stage fear


Academic Co
ordinator


HOD (FE)


Principal (SCOE),



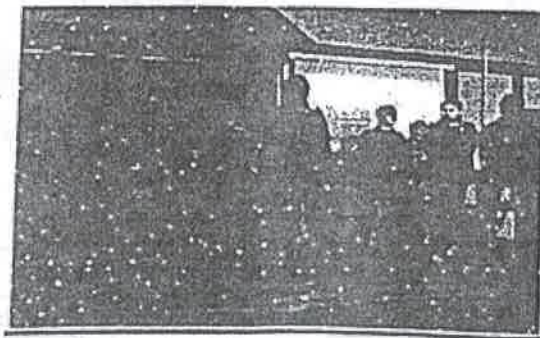
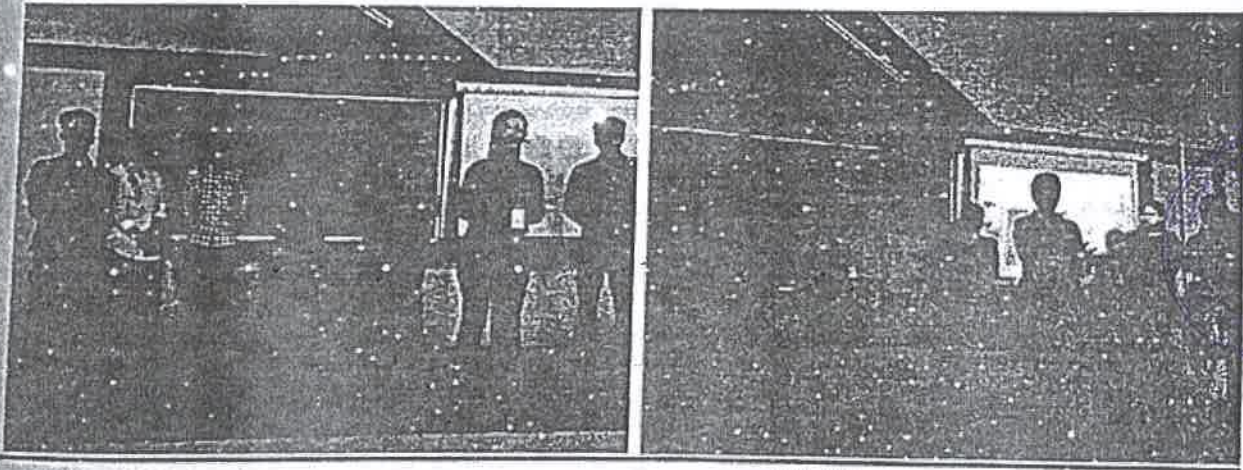

PRINCIPAL
Saraswati College of Engineering
Kharghar, Navi Mumbai-410210

Group Activity (Groups): Information Technology

Student participation- (Group sample)- Assessment & feedback shared with the students

G.oup Task	Student name	Module- Team Building & Leadership	Module- Current Affairs & Social Issues
1	Sahil, Pratik, Pallavi, Vedika, Pranay, Abhishek, Aditya,	Restaurant Management	Dokalam Issue TriJunction
2	Yash, Saurabh, Ankit, Rahul, Shivam, Rohan, Nitesh, Neha	Web Development Company	Terrorism
3	Dhanashree, Jyoti, Sanjivani, Gauri, Shefali, Sayali, Sagarika, Nikita, Chetna	Arranging Farewell Party	Women Empowerment
4	Sagarika, Nikita, Sanjivani, Bhagyashree, Soumya, Chetna	Restaurant Management	As audience – Q & A
5	Dhanashree, Jyoti, Kiran, Gauri, Neha, Varsha	Electronic Shop	As audience –Q & A

Student Group activity & Tasks given - Some Moments- IT dept.



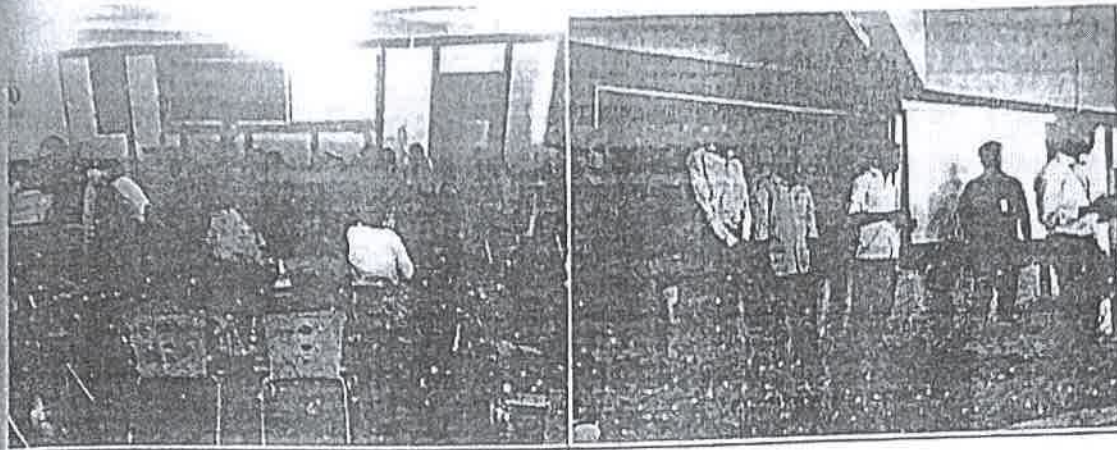
(Handwritten signature)


PRINCIPAL
Saraswati College of Engineering
Kharghar, Navi Mumbai-410210.



SARASWATI College of Engineering

Green Area Acharya and Dattatreya
Kharghar, Navi Mumbai - 410 210




PRINCIPAL
Saraswati College of Engineering
Kharghar, Navi Mumbai-410210



SARASWATI Education Society's
SARASWATI College of Engineering

Learn Live Achieve and Contribute

Kharghar, Navi Mumbai - 410 210.

Recommendations:

All details were shared and discussed with the concerned HOD, the class advisor and students, as & when required.

However, as per the views shared:

- Modules may prove to be additionally beneficial if students are regular and the seriousness towards the cause is maintained. This would help in increased participation following a proper sequence
- As suggested, discussed, a final sorted & selected list can be prepared for the students showing larger interest. This may avoid unnecessary peer pressures & disturbance to the ones interested, ensuring complete participation.
- It has been an enriching experience to train the young students.
- All the students, who regularly attended the sessions, were enthusiastic and keen to improve and many of them have shown potential to go ahead successfully.

The 'NURTURE' Skill development program is an initiative in the interest of our students.

Any new effort targeted towards learning and improvement of students takes an institute to the next level along with a scope for improvement. Hence, valuable views are most welcome.

With Regards,

Prof Alka Purohit

AP-CS

Program Coordinator – 'NURTURE' Skill Development

Dr. Manjusha Deshmukh

Principal- SCOE



PRINCIPAL

Sarswati College of Engineering
Kharghar, Navi Mumbai-410210



PRINCIPAL
Saraswati College of Engineering
Kharghar, Navi Mumbai-410210

Enclosures:

- Attendance sheet
- Time table
- Sample 'Student – Nurture File'
(Containing all concepts & tasks, test given)
- Sample-Activity sheets
- Soft copy of 'NURTURE' workshop pictures
- Student Feedback



All content above discussed with & handed over to the concerned department.



SARASWATI Education Society's
SARASWATI College of Engineering

Learn Live Achieve and Contribute

Kharghar, Navi Mumbai - 410 210.

CC.

(In alphabetical order)

HOD- Computer

**Head of Department
Computer Engg.**

HOD- Information Technology

**HOD
Department of
Information Technology**

HOD- Mechanical

Date: 30/04/2018

PRINCIPAL
Saraswati College of Engineering
Kharghar, Navi Mumbai-410210.

